

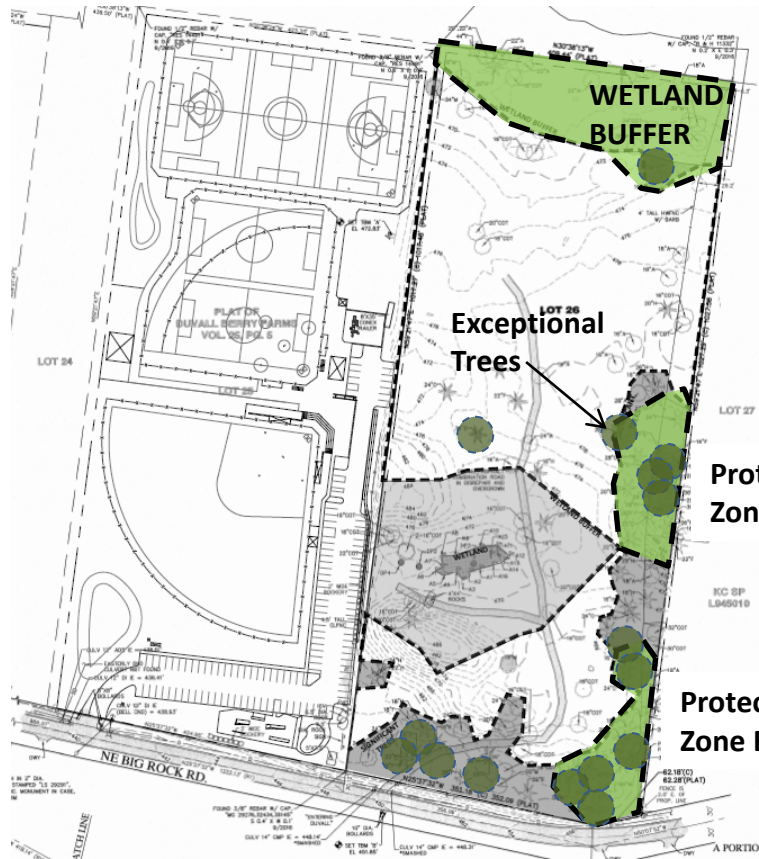
**CITY OF DUVALL
BIG ROCK PROPERTY
FEASIBILITY ANALYSIS**

AUGUST 25, 2021

SITE ANALYSIS



08-03-21 DEVELOPABLE AREA

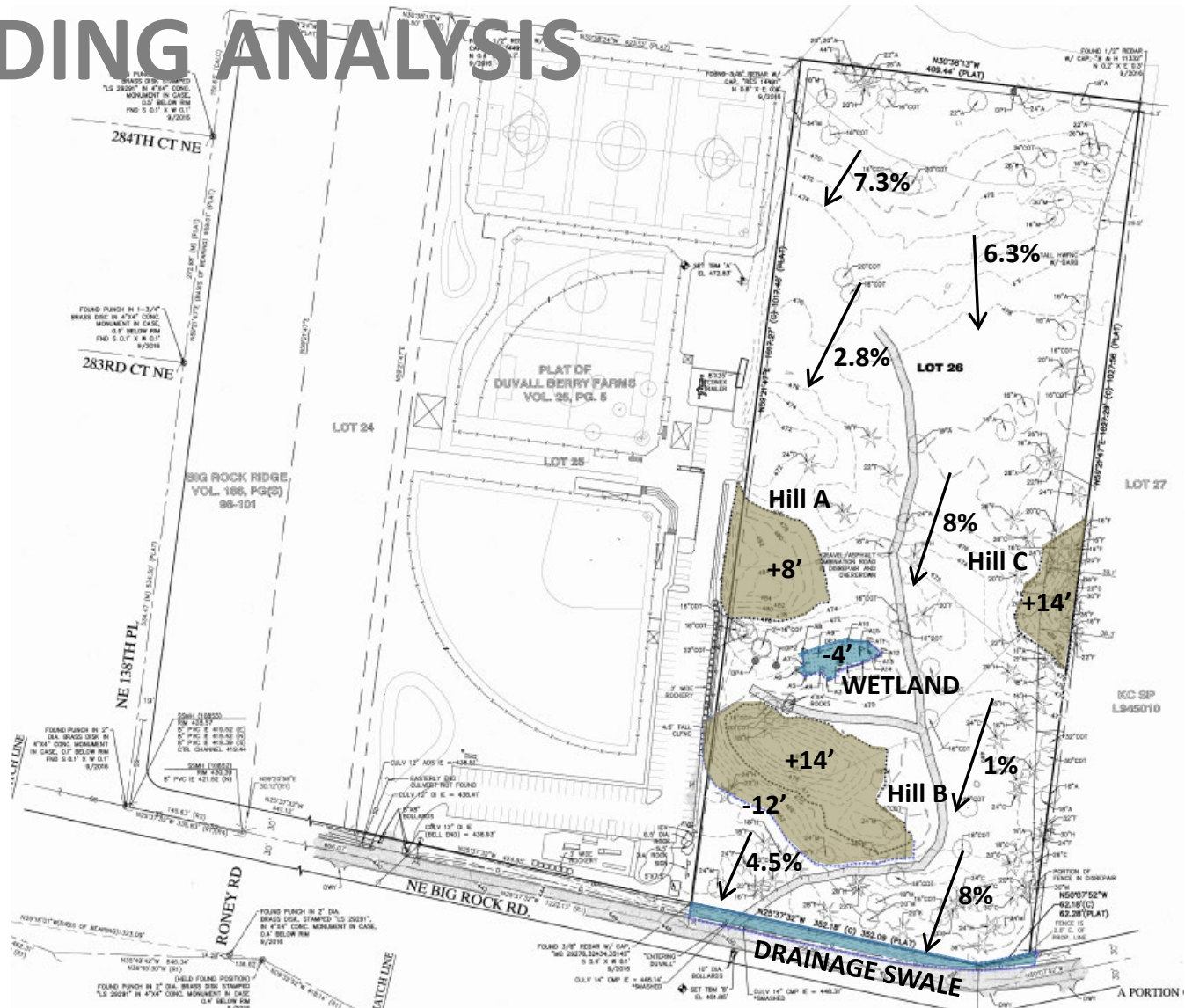


08-16-21 TREE PROTECTION ZONES

Protection Zone A

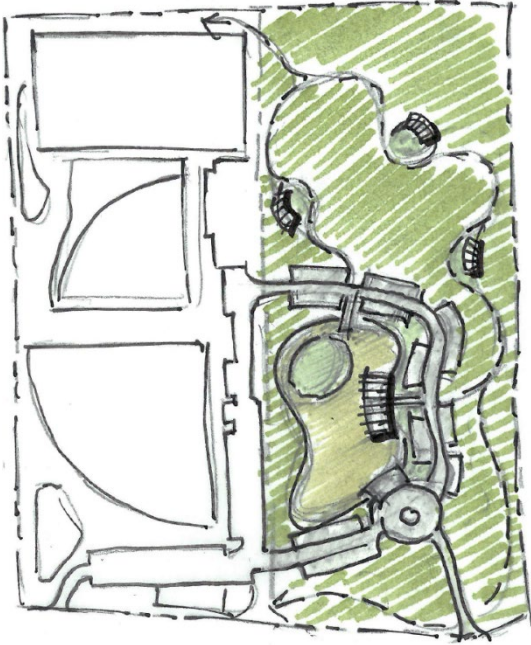
Protection Zone B

GRADING ANALYSIS



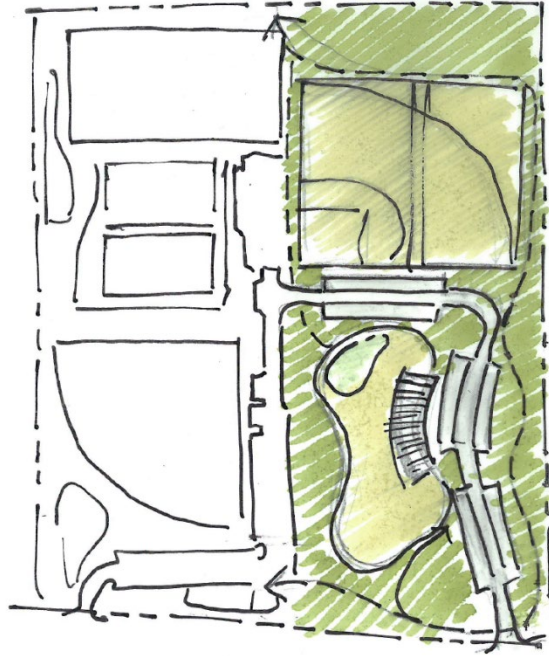
A PORTION

PROGRAMMING DISCUSSION



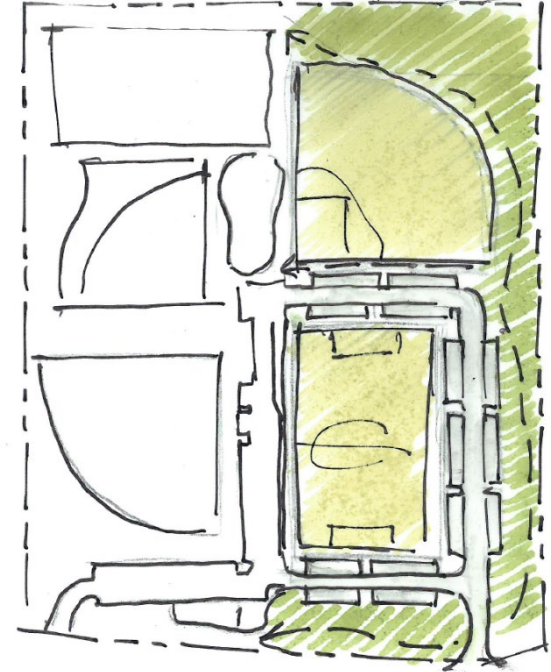
PASSIVE APPROACH

- TRAILS
- CENTRAL LAWN
- PICNIC AREAS
- PARKING



COMBO APPROACH

- TRAILS
- CENTRAL LAWN
- PICNIC AREAS
- SPORT FIELDS
- PARKING



SPORTS FOCUSED

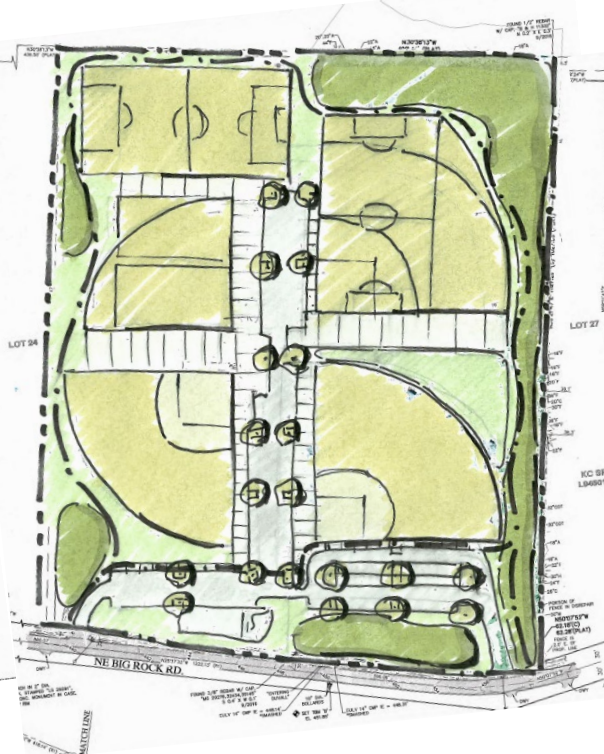
- SPORT FIELDS
- PARKING
- PERIMETER TRAIL

SPORTS FIELDS – TEST FITTING



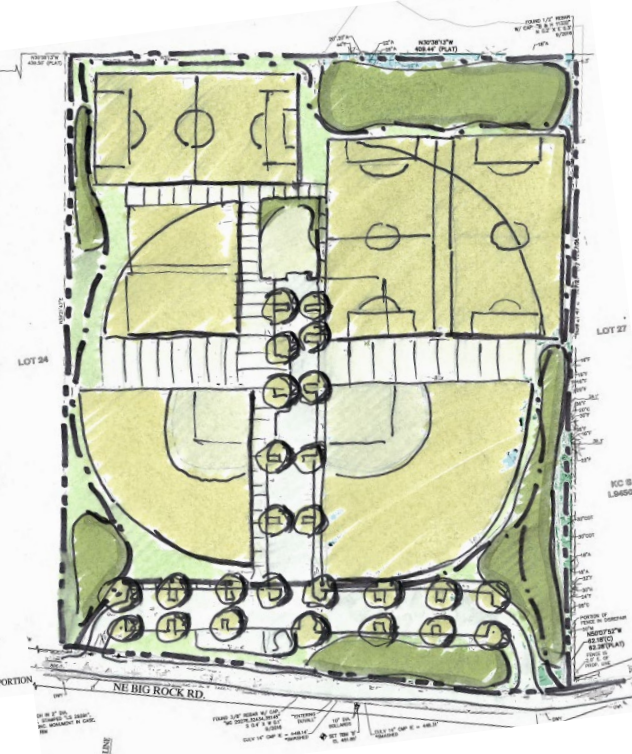
SPORTS – OPTION A

- (2) MULTI-USE FIELDS
- (1) BASEBALL / SOFTBALL FIELDS
- PROTECTS EXCEPTIONAL TREES
- PERIMETER TRAIL
- IMPROVED PLAYGROUND
- ADDITIONAL PARKING



SPORTS – OPTION B

- (1) MULTI-USE FIELD
- (2) BASEBALL / SOFTBALL FIELDS
- PERIMETER TRAIL
- OUTFIELD LAWN / PLAY AREA
- ADDITIONAL PARKING



SPORTS – OPTION C

- (2) MULTI-USE FIELDS
- (2) BASEBALL / SOFTBALL FIELDS
- PERIMETER TRAIL
- IMPROVED PLAYGROUND
- ADDITIONAL PARKING

A black and white photograph of an outdoor sports field, likely a soccer or football field, with the text "THANKS!!!" overlaid in the center. The field is marked with white lines, and there are several soccer goals visible in the background. The field is surrounded by a fence, and there are trees and a building in the distance. A tall light pole is visible on the right side of the field. The sky is clear and bright.

THANKS!!!