

Preliminary

CITY OF DUVALL BRUETT ROAD REPLACEMENT

50% SUBMITTAL

PROJECT NO: W251856WA
NOVEMBER 2025



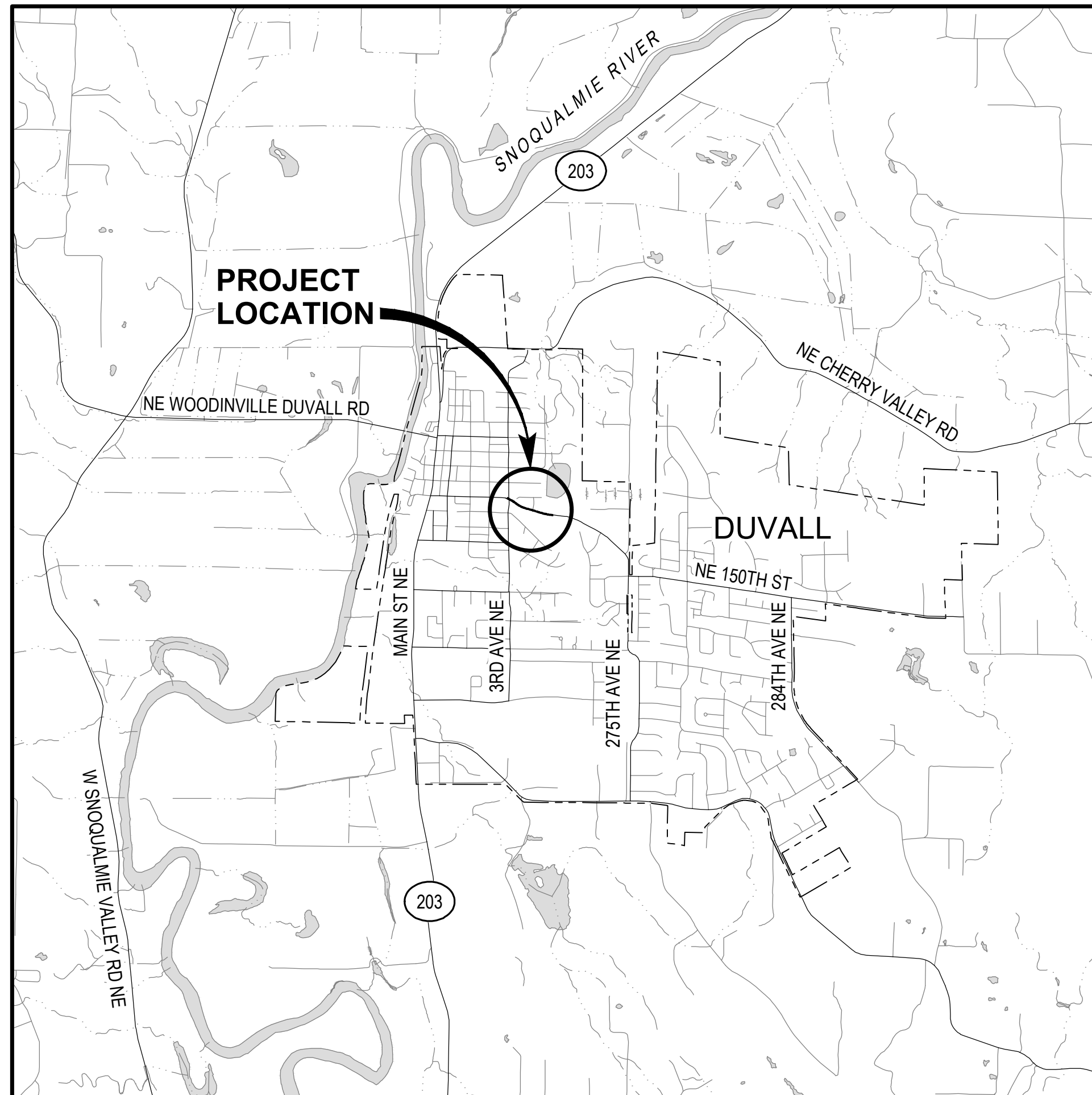
City of Duvall

Small Town. Real Life.

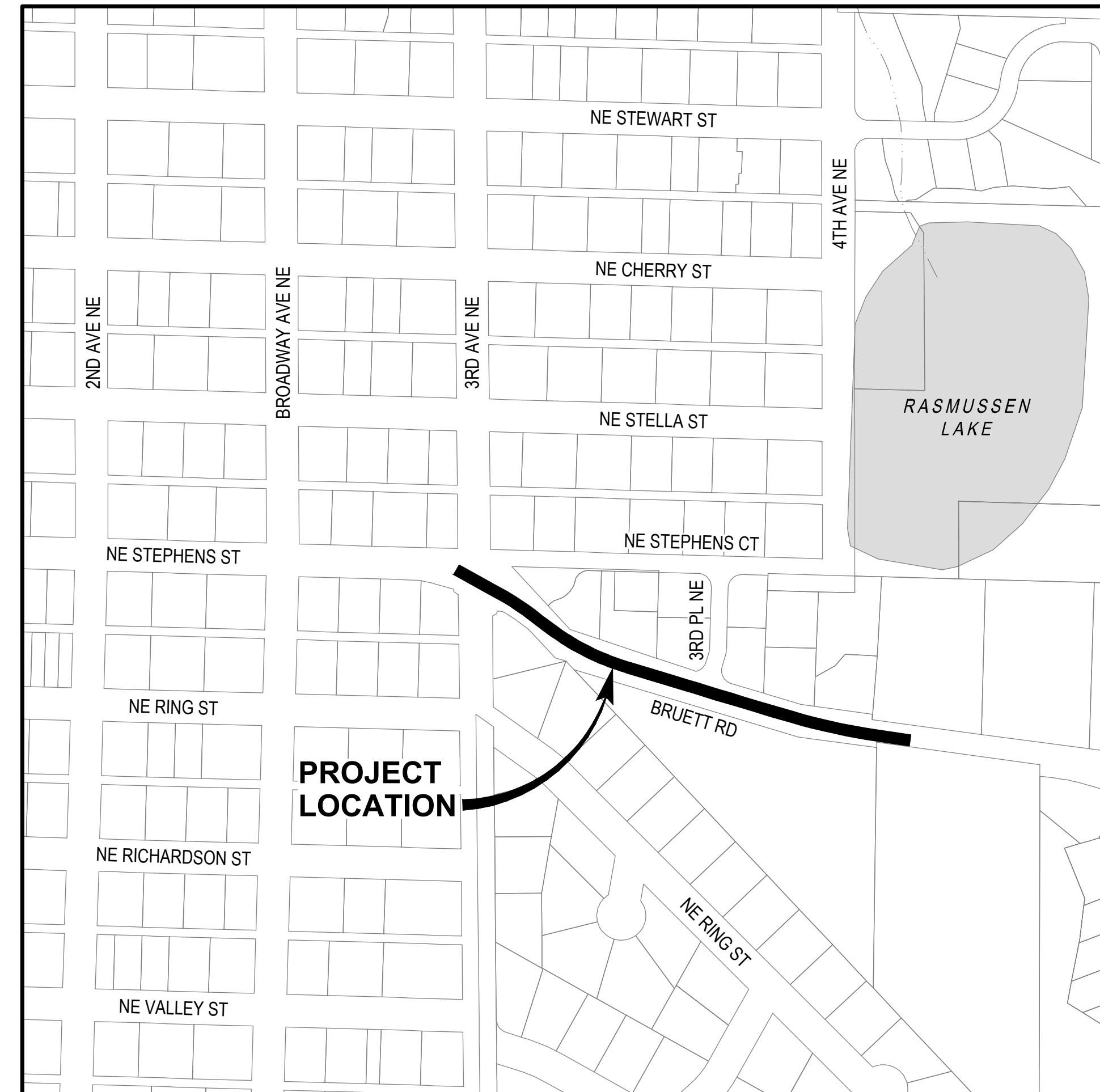
City, would you like any specific contacts listed on this cover sheet? Such as mayor, council, PWD, city engineer, etc? If so, please provide name and contact information to be listed here.



600 UNIVERSITY ST, SUITE 300
SEATTLE, WA 98101
P 206.462.7030



VICINITY MAP
SCALE: 1" = 2000'



LOCATION MAP
SCALE: 1" = 200'

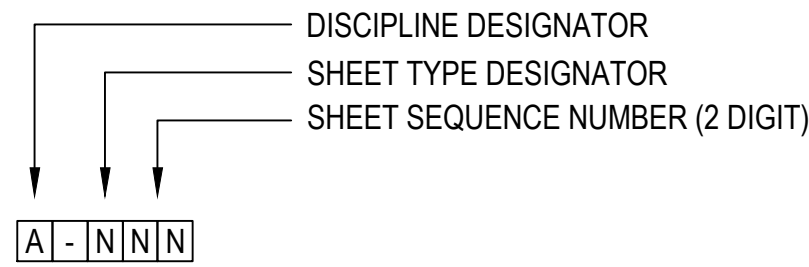
PRELIMINARY
NOT FOR
CONSTRUCTION



Know what's below.
Call before you dig.

SHEET INDEX	
DWG NAME	DESCRIPTION
GENERAL	
G-000	COVER SHEET
G-001	SHEET INDEX AND SYMBOLS
G-002	ABBREVIATIONS
G-003	NOTES
G-004	GENERAL HORIZONTAL AND VERTICAL CONTROL
CIVIL	
C-001	CIVIL LEGEND AND SYMBOLS
W-C-101	WATER MAIN PLAN AND PROFILE - STA A10+00 TO STA A13+00
W-C-102	WATER MAIN PLAN AND PROFILE - STA A13+00 TO STA A16+00
W-C-103	WATER MAIN PLAN AND PROFILE - STA A16+00 TO STA A19+00
W-C-104	WATER MAIN CONNECTION DETAILS
P-C-101	CURB RAMP DETAILS

SHEET INDEX DESIGNATIONS



DISCIPLINE DESIGNATORS

- G GENERAL
- C CIVIL
- L LANDSCAPE
- A ARCHITECTURAL
- S STRUCTURAL
- D PROCESS
- P PLUMBING
- M MECHANICAL (HVAC)
- F FIRE PROTECTION
- E ELECTRICAL
- I INSTRUMENTATION AND P&IDS

SHEET TYPE DESIGNATORS

- 0 GENERAL
- 1 PLAN VIEWS
- 2 ELEVATIONS
- 3 SECTIONS
- 4 LARGE SCALE VIEWS
- 5 DETAILS
- 6 SCHEDULES AND DIAGRAMS
- 7 USER DEFINED
- 8 USER DEFINED
- 9 3D REPRESENTATION

MATERIAL PATTERNS

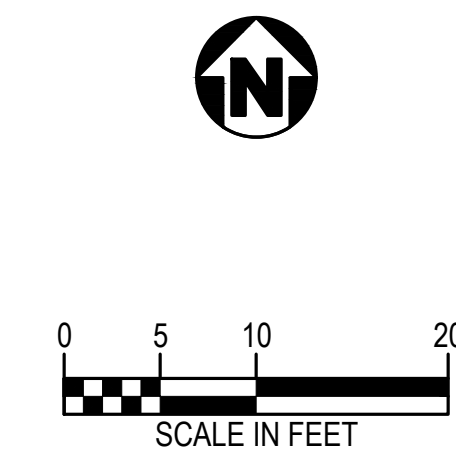
EARTH 	CONCRETE 	CRUSHED ROCK 	GRAVEL / GROUT 	STEEL 	ASPHALT CONCRETE 	CMU (SMOOTH) 	CMU (SPLITFACE)
EARTH (PACKED) 	GRATING 	DIAMOND PLATE 	TRENCH DRAIN 	FULL-DEPTH ROADWAY 			
	PLAN	PLAN	PLAN	PLAN	SECTION	ELEVATION	ELEVATION
					PLAN	PLAN	PLAN
	SECTION	SECTION	SECTION	SECTION			
						SECTION	SECTION

VIEW TITLE DESIGNATIONS

PLAN AND PROFILE	ELEVATION	SECTION	DETAIL	PHOTO
PLAN SCALE: 1/4"=1'-0"	 ELEVATION LETTER DESIGNATION SHEET WHERE ELEVATION IS SHOWN *	 SECTION LETTER DESIGNATION SHEET WHERE SECTION IS SHOWN *	 DETAIL NUMBER SHEET FROM WHICH DETAIL IS TAKEN *	 PHOTO NUMBER SHEET WHERE PHOTO IS SHOWN *
PROFILE SCALE: 1"=X' HORIZ, 1"=X' VERT	 ELEVATION LETTER DESIGNATION SCALE: SHEET FROM WHICH ELEVATION IS TAKEN * ADDITIONAL SHEETS (IF APPLICABLE)	 SECTION LETTER DESIGNATION SCALE: SHEET FROM WHICH SECTION IS TAKEN * ADDITIONAL SHEETS (IF APPLICABLE)	 DETAIL NUMBER SCALE: SHEET FROM WHICH DETAIL IS TAKEN * ADDITIONAL SHEETS (IF APPLICABLE)	 PHOTO NUMBER SCALE: SHEET FROM WHICH PHOTO IS TAKEN *

* NOTE: IF PLAN AND SECTION FOR DETAIL CALL-OUT AND DETAIL ARE SHOWN ON THE SAME DRAWING, DRAWING NUMBER IS REPLACED WITH A DASH.

NORTH ARROW AND SCALE BAR



GENERAL NOTE:

- THIS IS A STANDARD GENERAL SHEET, NOT ALL OF THE INFORMATION SHOWN MAY BE USED ON THIS PROJECT.

Consultant:

Sub Consultant:

50% SUBMITTAL

Engineer's Seal:
PRELIMINARY NOT FOR CONSTRUCTION

Client / Owner:

Small Town. Real Life.

Project Title:
**CITY OF DUVALL
BRUETT ROAD REPLACEMENT
PROJECT**

GENERAL
SHEET INDEX AND SYMBOLS

Designed By: KSR	Consort Project No.: W251856WA.01
Drawn By: EJJ	Issued On: NOVEMBER 2025
Checked By: JAM	Sheet: G-001
Approved By: APP	0 1/2 1 IF BAR DOES NOT MEASURE 1" DRAWING IS NOT TO SCALE

1		2		3		4		5		6		7	
@	AT	CMP	CORRUGATED METAL PIPE	FLR	FLOOR	KPL	KICK PLATE	PREP	PREPARATION	TB	THRUST BLOCK		
AASHTO	AMERICAN ASSOCIATION OF STATE HIGHWAY & TRANSPORTATION OFFICIALS	CMU	CONCRETE MASONRY UNIT	FM	FORCE MAIN	KVA	KILOVOLT AMPERE	PRESS	PRESSURE	TBD	TO BE DETERMINED		
AB	ANCHOR BOLT	CND	CONDUIT	FO	FIBER OPTIC	KW	KILOWATT	PRKG	PARKING	TBM	TEMPORARY BENCHMARK		
ABAN(D)	ABANDON(ED)	CO	CLEANOUT	FOC	FACE OF CONCRETE	KWY	KEYWAY	PROP	PROPOSED	TC	TOP OF CONCRETE / TOP OF CURB		
ABS	ACRYLONITRILE BUTADIENE STYRENE	COL	COLUMN	FOF	FACE OF FINISH	L	LENGTH	PRV	PRESSURE REDUCING VALVE	TCE	TEMPORARY CONSTRUCTION EASEMENT		
ABV	ABOVE / ALCOHOL BY VOLUME	COMB	COMBINATION	FOM	FACE OF MASONRY	LAB	LABORATORY	PS	PUMP STATION	TDH	TOTAL DYNAMIC HEAD		
AC	ASPHALTIC CONCRETE	CONC	CONCRETE	FOS	FACE OF STUDS	LAV	LAVATORY	PSIG	POUNDS PER SQUARE INCH GAUGE	TEMP	TEMPERATURE / TEMPORARY		
ACP	ASPHALTIC CONCRETE PAVING	CONN	CONNECTION	FPM	FEET PER MINUTE	LB	POUND	PSL	PIPE SLEEVE	T&G	TONGUE & GROOVE		
ADJ	ADJUSTABLE	CONST	CONSTRUCTION	FPS	FEET PER SECOND	LF	LINEAR FOOT	PSPT	PIPE SUPPORT	THK	THICK / THICKNESS		
ADJC	ADJACENT	CONT	CONTINUOUS / CONTINUATION	FRP	FIBERGLASS REINFORCED PLASTIC	LIN	LINEAL	PT	POINT OF TANGENCY	THRD	THREAD (ED)		
AFF	ABOVE FINISHED FLOOR	CONTR	CONTRACT(OR)	FT	FEET / FOOT	LN	LANE	PTVC	POINT OF TANGENCY ON VERTICAL CURVE	THRU	THROUGH		
AFG	ABOVE FINISHED GRADE	COORD	COORDINATE	FTG	FOOTING	LOC	LOCATION	PTW	PUMP TO WASTE	TP	TEST PIT / TOP OF PAVEMENT / TURNING POINT		
AHR	ANCHOR	COP	COPPER	FUT	FUTURE	LONG	LONGITUDINAL	PUE	PUBLIC UTILITY EASEMENT	TRANS	TRANSITION		
AL	ALUMINUM	CORP	CORPORATION	FXTR	FIXTURE	LP	LOW PRESSURE	PV	PLUG VALVE	TSP	TRI-SODIUM PHOSPHATE		
ALT	ALTERNATE	CORR	CORRUGATED	G	GAS	LPT	LOW POINT	PVC	POLYVINYL CHLORIDE	TST	TOP OF STEEL		
AMP	AMPERE	CP	CONTROL POINT	GAL	GALLON	LRG	LARGE	PVMT	PAVEMENT	TW	TOP OF WALL		
ANSI	AMERICAN NATIONAL STANDARDS INSTITUTE	CPLG	COUPLING	GALV	GALVANIZED	LS	LONG SLEEVE / LUMP SUM	PW	POTABLE WATER	TYP	TYPICAL		
APPROX	APPROXIMATE	CPVC	CHLORINATED POLYVINYL CHLORIDE	GC	GROOVED COUPLING	LT	LEFT	PWR	POWER	UG	UNDERGROUND		
APPVD	APPROVED	CR	CRUSHED ROCK	GFA	GROOVED FLANGE ADAPTER	LVL	LEVEL	QTY	QUANTITY	UH	UNIT HEATER		
APWA	AMERICAN PUBLIC WORKS ASSOCIATION	CS	COMBINED SEWER	GI	GALVANIZED IRON	LWL	LOW WATER LINE	RAD	RADIUS	UN	UNION		
ARCH	ARCHITECTURAL	CSP	CONCRETE SEWER PIPE	GIP	GALVANIZED IRON PIPE	MAN	MANUAL	RC	REINFORCED CONCRETE	UNO	UNLESS OTHERWISE NOTED		
ARV	AIR RELEASE VALVE	CT	COURT	GJ	GRIP JOINT	MAT	MATERIAL	RCP	REINFORCED CONCRETE PIPE	USGS	UNITED STATES GEOLOGIC SURVEY		
ASCE	AMERICAN SOCIETY OF CIVIL ENGINEERS	CTR	CENTER	GL	GLASS	MAX	MAXIMUM	RD	ROAD / ROOF DRAIN	V	VENT / VOLT		
ASR	AQUIFER STORAGE & RECOVERY	CU	CUBIC	GLV	GLOBE VALVE	MCC	MOTOR CONTROL CENTER	RDCR	REDUCER	VAC	VACUUM		
ASSN	ASSOCIATION	CULV	CULVERT	GND	GROUND	MCP	MASTER CONTROL PANEL	REF	REFERENCE	VB	VACUUM BREAKER		
ASSY	ASSEMBLY	CV	CONTROL VALVE	GPD	GALLONS PER DAY	MECH	MECHANICAL	REINF	REINFORCE(D)(ING)(MENT)	VBOX	VALVE BOX		
ASTM	AMERICAN SOCIETY FOR TESTING & MATERIALS	CW	CLOCKWISE / COLD WATER	GPH	GALLONS PER HOUR	MET	METAL	REQ'D	REQUIRED	VC	VERTICAL CURVE		
ATM	ATMOSPHERE	CY	CUBIC YARDS	GPM	GALLONS PER MINUTE	MFR	MANUFACTURER	RESTR	RESTRAINED	VERT	VERTICAL		
AUTO	AUTOMATIC	CYL	CYLINDER LOCK	GR	GRADE	MGD	MILLION GALLONS PER DAY	RFA	RESTRAINED FLANGE COUPLING ADAPTER	VFD	VARIABLE FREQUENCY DRIVE		
AUX	AUXILIARY	D	DRAIN	GR LN	GRADE LINE	MH	MANHOLE	RM	ROOM	VOL	VOLUME		
AVE	AVENUE	DC	DIRECT CURRENT	GRTG	GRATING	MIN	MINIMUM	RND	ROUND	VCP	VITRIFIED CLAY PIPE		
AVG	AVERAGE	DEFL	DEFLECTION	GV	GATE VALVE	MIPT	MALE IRON PIPE THREAD	RO	ROUGH OPENING	VTR	VENT THROUGH ROOF		
AWWA	AMERICAN WATER WORKS ASSOCIATION	DEMO(D)	DEMOLISH(ED)	GRVL	GRAVEL	MISC	MISCELLANEOUS	R/W	RIGHT-OF-WAY	W	WATER		
		DEQ	DEPARTMENT OF ENVIRONMENTAL QUALITY	GYP	GYPSPUM	MJ	MECHANICAL JOINT	RPBPD	REDUCED PRESSURE BACKFLOW PREVENTION DEVICE	W/	WITH		
		DET	DETAIL	HB	HOSE BIBB	MON	MONUMENT / MONOLITHIC	RPM	REVOLUTIONS PER MINUTE	W/IN	WITHIN		
		DIA	DIAMETER	HC	HOLLOW CORE	MOT	MOTOR	RR	RAILROAD	W/O	WITHOUT		
		DIM	DIMENSION	HDP	HIGH DENSITY POLYETHYLENE	MP	MILEPOST	RST	REINFORCED STEEL	WW	WALL TO WALL		
		DIR	DIRECTION	HDR	HEADER	MSL	MEAN SEAL LEVEL	RT	RIGHT	WD	WOOD		
		DIST	DISTANCE	HDWE	HARDWARE	MTD	MOUNTED			WF	WIDE FLANGE		
		DN	DOWN	HGR	HANGER	NA	NOT APPLICABLE			WH	WATER HEATER		
		DR	DRIVE	HGT	HEIGHT	NAVD	NORTH AMERICAN VERTICAL DATUM			WI	WROUGHT IRON		
		DS	DOWNSPOUT	HH	HANDHOLD	NC	NORMALLY CLOSED			WM	WATER METER		
		DWG	DRAWING	HM	HOLLOW METAL	NF	NEAR FACE			WP	WORKING POINT / WATERPROOFING		
		DWL	DOWEL	HMAC	HOT MIX ASPHALT CONCRETE	NIC	NOT IN CONTRACT			WS	WATER SERVICE		
		DWV	DRAIN WASTE AND VENT	HNDRL	HANDRAIL	NO / NO.	NORMALLY OPEN / NUMBER			WT	WEIGHT		
		DWY	DRIVEWAY	HOA	HAND-OFF-AUTO	NOM	NOMINAL			WTRT	WATERTIGHT		
		E / ELEC	ELECTRICAL	HOR	HAND-OFF-REMOTE	NORM	NORMAL			WWF	WELDED WIRE FABRIC		
		EA	EACH	HORIZ	HORIZONTAL	NRS	NON-RISING STEM			WWTF	WASTEWATER TREATMENT FACILITY		
		ECC	ECCENTRIC	HP	HIGH PRESSURE / HORSEPOWER	NTS	NOT TO SCALE			WWTP	WASTEWATER TREATMENT PLANT		
		ECL	ELEVATION	HPG	HIGH PRESSURE GAS					X SECT	CROSS SECTION		
		ELB	ELBOW	HPT	HIGH POINT					XFMR	TRANSFORMER		
		ENCL	ENCLOSURE	HR	HOUR					YD	YARD DRAIN / YARD		
		EOP	EDGE OF PAVEMENT	HSB	HIGH STRENGTH BOLT					YH	YARD HYDRANT		
		EQ	EQUAL	HV	HOSE VALVE					YR	YEAR		
		EQL SP	EQUALLY SPACED	HVAC	HEATING, VENTILATION, AIR CONDITIONING								
		EQUIP	EQUIPMENT	HWL	HIGH WATER LINE								
		ESMT	EASEMENT	HWY	HIGHWAY								
		EW	EACH WAY	HYD	HYDRANT								
		EXC	EXCAVATE	HYDR	HYDRAULIC								
		EXIST	EXISTING	I&C	INSTRUMENTATION & CONTROL								
		EXP	EXPANSION	IAW	IN ACCORDANCE WITH								
		EXP BT	EXPANSION BOLT	ID	INSIDE DIAMETER								
		EXP JT	EXPANSION JOINT	IE	INVERT ELEVATION								
		EXT	EXTERIOR	IF	INSIDE FACE								
		F	FAHRENHEIT	IMPVT	IMPROVEMENT								
		F TO F	FACE TO FACE	IN	INCH								
		FAB	FABRICATE	INCC	INCLUDE(D)(ING)								
		FB	FLAT BAR	INFL	INFLENT								
		FCA	FLANGED COUPLING ADAPTER	INJ	INJECTION								
		FCO	FLOOR CLEANOUT	INSTL	INSTALLATION								
		FD	FLOOR DRAIN	INSUL	INSULATION								
		FDN	FOUNDATION	INTER	INTERCEPTOR								
		FEXT	FIRE EXTINGUISHER	INTR	INTERIOR								
		FF	FINISHED FLOOR / FAR FACE	INV	INVERT								
		FG	FIBERGLASS	IP	IRON PIPE								
		FH	FIRE HYDRANT	IPT	IRON PIPE THREAD								
		FIN	FINISH(ED)	IR	IRON ROD								
		FIPT	FEMALE IRON PIPE THREAD	IRRIG	IRRIGATION								
		FITG	FITTING	JT	JOINT								
		FL	FLOOR LINE	JUNC	JUNCTION								
		FLX	FLEXIBLE										
		FLG	FLANGE										
		FLL	FLOW LINE										

GENERAL NOTE:
1. THESE ARE STANDARD ABBREVIATIONS, NOT ALL OF THESE MAY BE USED ON THIS PROJECT.


Consultant: 

This document, and the ideas and designs incorporated herein, are Instruments of Professional Service of Consor and are not to be used, reused, or modified, in whole or in part, by any other person for any other purpose without the express written authorization of Consor.

Sub Consultant:

50% SUBMITTAL

Engineer's Seal:
**PRELIMINARY
NOT FOR
CONSTRUCTION**

Client / Owner:

Small Town. Real Life.

Project Title:
**CITY OF DUVALL
BRUETT ROAD REPLACEMENT
PROJECT**

GENERAL
ABBREVIATIONS

Designed By: KSR	Consor Project No.: W251856WA.01
Drawn By: EJJ	Issued On: NOVEMBER 2025
Checked By: JAM	Sheet: G-002
Approved By: APP	0 1/2 1 IF BAR DOES NOT MEASURE 1" DRAWING IS NOT TO SCALE

GENERAL NOTES

1. ALL CONSTRUCTION OPERATIONS ARE TO BE ACCOMPLISHED IN ACCORDANCE WITH APPLICABLE STATE STATUES AND OSHA REGULATIONS.
2. ALL WORK SHALL COMPLY WITH THE CURRENT LOCAL AGENCY STANDARDS AND REQUIREMENTS.
3. THE CONTRACTOR SHALL SCHEDULE WORK IN SUCH A MANNER AS TO AVOID UNNECESSARY INCONVENIENCE TO THE OWNER OR THE PUBLIC.
4. THE CONTRACTOR SHALL BE RESPONSIBLE FOR THE PROTECTION OF ALL SURVEY MONUMENTS AND CORNER MARKERS. SURVEY MONUMENTS AND PROPERTY CORNER MARKERS DAMAGED BY CONSTRUCTION ACTIVITIES SHALL BE REESTABLISHED BY A REGISTERED PROFESSIONAL SURVEYOR LICENSED IN THE STATE IN WHICH THE WORK IS BEING PERFORMED.
5. CONTRACTOR SHALL MAINTAIN THE JOB SITE IN A SAFE, NEAT, AND WORKMANLIKE MANNER AT ALL TIMES. JOB SITE SAFETY SHALL NOT BE COMPROMISED.
6. DIMENSIONS TO STRUCTURES, REFERENCED PIPING, PAVING, AND OTHER IMPROVEMENTS ARE APPROXIMATE. THE CONTRACTOR SHALL FIELD VERIFY ALL DIMENSIONS AND CONDITIONS 14 DAYS IN ADVANCE OF THE CONSTRUCTION PROGRESS.
7. STRUCTURES SUCH AS CURBS AND GUTTERS, CONCRETE AND ASPHALT DRIVES AND WALKWAYS, PAVING BRICKS, FENCING, RETAINING WALLS, SIGNS, POSTS, MARKERS, ETC., CROSSED BY A UTILITY THAT ARE NOT INDICATED IN THE PLANS SHALL BE RESTORED BY THE CONTRACTOR TO PRECONSTRUCTION CONDITIONS.
8. THE CONTRACTOR SHALL BE RESPONSIBLE FOR ANY DAMAGE TO EXISTING ROADS, BUILDINGS, OR OTHER STRUCTURES RESULTING FROM THE CONTRACTOR'S CONSTRUCTION ACTIVITIES. REPAIRS SHALL BE MADE TO PRECONSTRUCTION CONDITIONS.
9. CONTRACTOR IS RESPONSIBLE FOR OBTAINING ALL APPLICABLE PERMITS REQUIRED TO PERFORM THE WORK IN ACCORDANCE WITH THE CONTRACT DOCUMENTS.
10. THE CONTRACTOR SHALL BE RESPONSIBLE FOR ESTABLISHING STAGING AREAS REQUIRED TO PERFORM THE WORK.
11. THE CONTRACTOR SHALL MAINTAIN DRIVEWAY ACCESS TO ALL ADJOINING PROPERTIES ACCESSIBLE TO THE PUBLIC AND EMERGENCY VEHICLES. DESIGNS FOR MAINTAINING ACCESS WILL BE PREPARED BY THE CONTRACTOR AND SUBMITTED TO THE CONTROLLING AGENCY FOR THE REVIEW AND APPROVAL.
12. CONTRACTOR SHALL COMPLY WITH THE TRENCH PLATE REQUIREMENTS OF THE GOVERNING JURISDICTION. IF TRENCH PLATE REQUIREMENTS ARE NOT SPECIFIED, THE CONTRACTOR SHALL APPLY SKID RESISTANT COATING ON THE TRENCH PLATES AND COLD MIX ASPHALT CONCRETE TO THE EDGES. THE TRENCH PLATES SHALL BE NOTCHED INTO THE ASPHALT CONCRETE OR TRAVELED SURFACE TO PREVENT SLIPPAGE AND ROCKING UNDER TRAFFIC.
13. THE CONTRACTOR SHALL COMPLY WITH ALL FEDERAL, STATE, COUNTY, AND LOCAL LAWS AND ORDINANCES RELATING TO THE SAFETY AND CHARACTER OF WORK, EQUIPMENT, AND PERSONNEL. THIS INCLUDES, BUT IS NOT LIMITED TO SHEETING, SHORING, BRACING, VENTILATION, CONFORMANCE WITH TRAFFIC CONTROL AND MAINTENANCE OF BARRICADES AND WARNING DEVICES.
14. CONTRACTOR SHALL KEEP COMPLETE AND ACCURATE RECORD DRAWINGS OF THE WORK, UTILITY POT HOLE DATA, AND EXISTING CONDITIONS THAT HAVE CHANGED OR ARE DIFFERENT THAN SHOWN ON THE PLANS. UPON COMPLETION OF THE WORK, THE CONTRACTORS RECORD DRAWINGS SHALL BE SUBMITTED TO THE OWNER.
15. CONTRACTOR IS RESPONSIBLE FOR PROTECTING AND MAINTAINING ALL STORM DRAIN PIPES, STORM WATER FEATURES, OR DRAINAGE FACILITIES FROM DAMAGE DURING ALL STAGES OF CONSTRUCTION.
16. ALL EXISTING PAVEMENT MARKINGS AND SIGNAGE DISTURBED DURING CONSTRUCTION SHALL BE REPLACED BY CONTRACTOR AT NO EXPENSE TO OWNER.
17. CONTRACTOR WILL BE RESPONSIBLE FOR OBTAINING THE WATER FOR ALL PROJECT-RELATED ACTIVITIES INCLUDING BUT NOT LIMITED TO CONSTRUCTION, DUST CONTROL, TESTING, AND DISINFECTION. THE CONTRACTOR WILL BE RESPONSIBLE FOR COORDINATING WITH OWNER TO TAP EXISTING MAINS AND BRINGING WATER TO THE SITE.
18. CONTRACTOR WILL BE RESPONSIBLE FOR DEVELOPMENT OF A CONSTRUCTION STORMWATER POLLUTION PREVENTION PROGRAM. CONTRACTOR IS RESPONSIBLE FOR OBTAINING THE CONSTRUCTION PERMIT AND COMPLYING WITH ALL ASPECTS OF THE PERMIT.
19. NO POWER IS CURRENTLY AVAILABLE AT THE SITE. CONTRACTOR IS RESPONSIBLE FOR PROVIDING ALL POWER NEEDED FOR CONSTRUCTION.
20. THE CONTRACTOR SHALL RESTORE THE SITE GRADING AND DRAINAGE TO PRECONSTRUCTION CONDITIONS.

GENERAL PIPELINE NOTES:

1. ALL OPEN TRENCHES, WORK AREA, AND SHAFTS SHALL BE SLOPED OR HAVE A SHORING SYSTEM IN ACCORDANCE WITH OSHA, STATE, AND LOCAL REQUIREMENTS.
2. SCHEDULE TIE-INS IN ACCORDANCE WITH THE SEQUENCING REQUIREMENTS OF THE CONTRACT. SCHEDULE AND COORDINATE TIE-INS AROUND THE OWNER'S OPERATIONAL REQUIREMENT AND LIMITATION.
3. THE CONTRACTOR IS RESPONSIBLE FOR ARRANGING FOR REQUIRED INSPECTION. THE PRESENCE OR ABSENCE OF THE INSPECTOR WILL NOT RELIEVE THE CONTRACTOR OF FULL RESPONSIBILITY FOR THE PROPER PERFORMANCE OF THE WORK.

EXISTING UTILITY NOTES:

1. UTILITY LOCATIONS SHOWN ON PLANS ARE CONSIDERED APPROXIMATE ONLY. NO ELEVATIONS ARE SHOWN, AND NO INFORMATION WAS AVAILABLE DURING THE DESIGN PERIOD.
2. THE CONTRACTOR SHALL VERIFY LOCATION AND DEPTHS OF EXISTING UTILITIES BY CONTACTING ALL UTILITIES, AGENCIES, AND SUBSURFACE UTILITY LOCATING SERVICES (811). IN ADVANCE OF EXCAVATION, CONTRACTOR SHALL USE ALL EXISTING UTILITIES AND STRUCTURES ADJACENT TO THE WORK AREA, WHETHER INDICATED ON THE DRAWINGS OR NOT. SURVEY AND ACCURATELY RECORD THE LOCATIONS AND ELEVATIONS OF THE UTILITY CROSSINGS ON THE RECORD DRAWINGS. PREPARE AND SUBMIT THE UTILITY FIELD SURVEY INFORMATION TO THE OWNER FOR REVIEW ON A MONTHLY BASIS DURING THE COURSE OF CONSTRUCTION. SUBMITTAL SHALL INCLUDE UTILITIES SURVEYED THAT MONTH AND ASSOCIATED VERTICAL ELEVATIONS AND HORIZONTAL LOCATIONS (NORTHING AND EASTING COORDINATES) AND A LIST OF UTILITIES SURVEYED TO DATE. ALL COMPILED IN MICROSOFT EXCEL SPREADSHEET FORMAT. CONTRACTOR SHALL BE RESPONSIBLE FOR COORDINATING WITH THE UTILITY AGENCY THE PROTECTION, REMOVAL, RECONSTRUCTION, AND/OR RECONNECTION OF EXISTING FACILITIES AS REQUIRED TO COMPLETE THE WORK. CONTRACTOR SHALL NOTIFY CONSTRUCTION MANAGER IMMEDIATELY OF ANY POTENTIAL UTILITY CONFLICTS.
3. SUPPORT ALL EXISTING UTILITIES AT CROSSING LOCATIONS. PROTECT EXISTING UTILITIES RUNNING PARALLEL TO CONSTRUCTED TRENCHES FROM DAMAGE CAUSED BY THE REMOVAL OF ADJACENT MATERIALS.
4. SOME UTILITY SERVICES MAY NOT BE SHOWN ON THE DRAWINGS. THE CONTRACTOR SHALL TAKE NECESSARY MEASURES TO LOCATE AND PROTECT SERVICE DURING CONSTRUCTION.
5. PRIOR TO CONSTRUCTION OF ANY NEW PIPELINE THAT TIES INTO AN EXISTING UTILITY, EXPOSE AND VERIFY LOCATION AND ELEVATION OF THE TIE-IN POINT. CONFIRM THE EXISTING PIPE MATERIAL AND ANY OTHER INFORMATION REQUIRED BY THE DRAWINGS. SURVEY AND ACCURATELY RECORD THE LOCATION AND ELEVATION OF THE TIE-IN POINT ON THE RECORD DRAWINGS.
6. BEFORE CONSTRUCTION IS STARTED, CONTRACTOR SHALL COORDINATE WITH THE OWNER OF EACH UTILITY AND DEFINE THE REQUIREMENTS AND METHODS TO ACCOMMODATE THE PROTECTION, TEMPORARY SUPPORT, ADJUSTMENT, OR RELOCATION OF ANY UTILITIES AFFECTED BY THE PROPOSED WORK.
7. CONTRACTOR IS RESPONSIBLE FOR COSTS INCURRED AS A RESULT OF UTILITY RELOCATIONS PERFORMED FOR THE CONTRACTOR'S CONVENIENCE.

Consultant:



This document, and the ideas and designs incorporated herein, are Instruments of Professional Service of Consor and are not to be used, reused, or modified, in whole or in part, by any other person for any other purpose without the express written authorization of Consor.


Sub Consultant:

50% SUBMITTAL

Engineer's Seal:

**PRELIMINARY
NOT FOR
CONSTRUCTION**

Client / Owner:



City of Duvall
Small Town. Real Life.

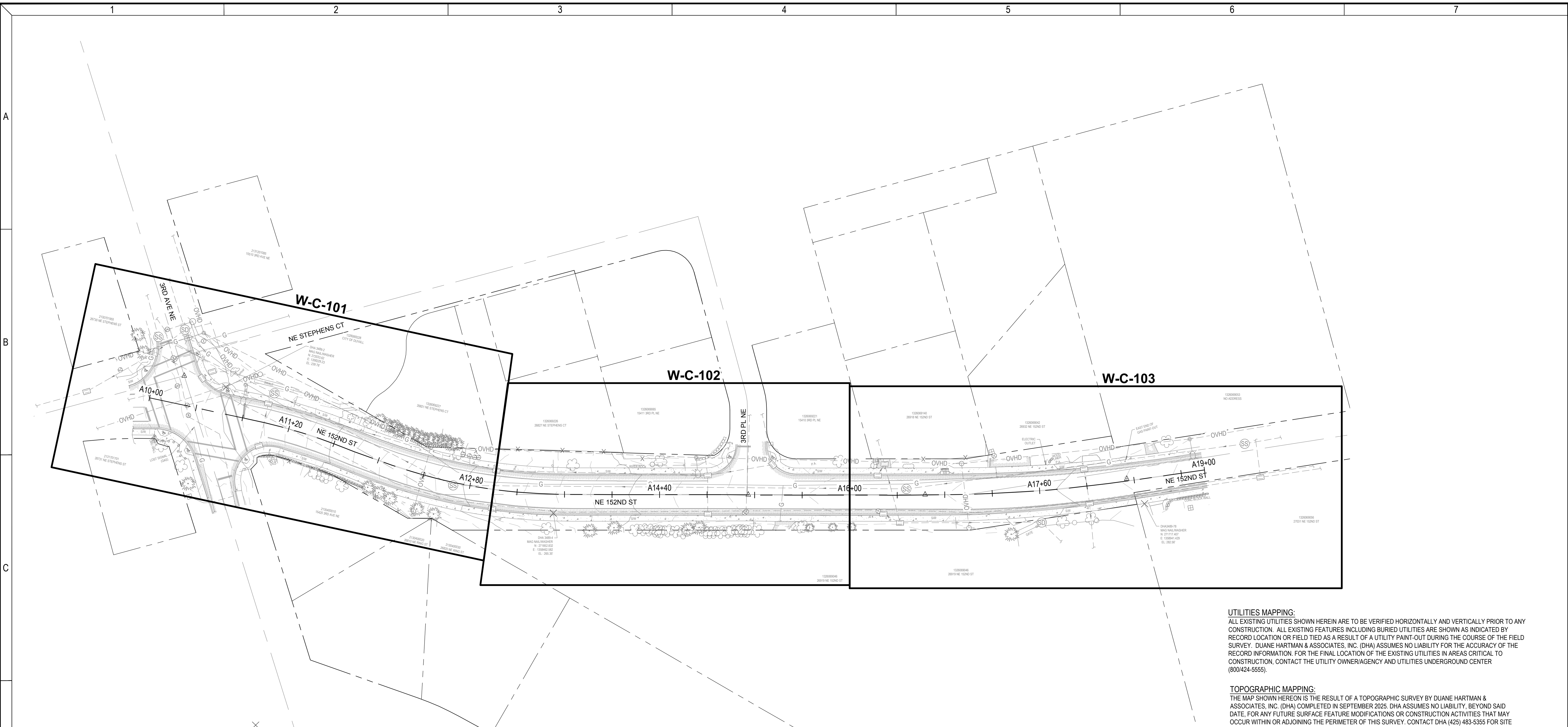
Project Title:

CITY OF DUVALL
BRUETT ROAD REPLACEMENT
PROJECT

GENERAL

NOTES

Designed By: KSR	Consor Project No.: W251856WA.01
Drawn By: EJJ	Issued On: NOVEMBER 2025
Checked By: JAM	Sheet: G-003
Approved By: APP	0 1/2 1 IF BAR DOES NOT MEASURE 1" DRAWING IS NOT TO SCALE



PLAN
SCALE: 1"=40'

DHA SURVEY CONTROL TABLE					
POINT #	POINT ID	NORTHING	EASTING	ELEVATION	DESCRIPTION
1	DHA3489.3-1	271754.058	1358171.291	233.44	MAG NAIL/WASHER
2	DHA3489.3-2	272033.618	1358229.228	239.76	MAG NAIL/WASHER
4	DHA3489.3-4	271852.833	1358462.582	265.35	MAG NAIL/WASHER
78	DHA3489.3-78	271717.407	1358941.429	282.56	MAG NAIL/WASHER

UTILITIES MAPPING:
ALL EXISTING UTILITIES SHOWN HEREIN ARE TO BE VERIFIED HORIZONTALLY AND VERTICALLY PRIOR TO ANY CONSTRUCTION. ALL EXISTING FEATURES INCLUDING BURIED UTILITIES ARE SHOWN AS INDICATED BY RECORD LOCATION OR FIELD TIED AS A RESULT OF A UTILITY PAINT-OUT DURING THE COURSE OF THE FIELD SURVEY. DUANE HARTMAN & ASSOCIATES, INC. (DHA) ASSUMES NO LIABILITY FOR THE ACCURACY OF THE RECORD INFORMATION. FOR THE FINAL LOCATION OF THE EXISTING UTILITIES IN AREAS CRITICAL TO CONSTRUCTION, CONTACT THE UTILITY OWNER/AGENCY AND UTILITIES UNDERGROUND CENTER (800/424-5555).

TOPOGRAPHIC MAPPING:
THE MAP SHOWN HEREON IS THE RESULT OF A TOPOGRAPHIC SURVEY BY DUANE HARTMAN & ASSOCIATES, INC. (DHA) COMPLETED IN SEPTEMBER 2025. DHA ASSUMES NO LIABILITY, BEYOND SAID DATE, FOR ANY FUTURE SURFACE FEATURE MODIFICATIONS OR CONSTRUCTION ACTIVITIES THAT MAY OCCUR WITHIN OR ADJOINING THE PERIMETER OF THIS SURVEY. CONTACT DHA (425) 483-5355 FOR SITE UPDATES AND VERIFICATIONS.

TELECOMMUNICATIONS/FIBER OPTIC DISCLAIMER:
RECORDS OF UNDERGROUND TELECOMMUNICATIONS AND/OR FIBER OPTIC LINES ARE NOT ALWAYS AVAILABLE TO THE PUBLIC. DHA HAS NOT CONTACTED EACH OF THE MANY COMPANIES, IN THE COURSE OF THIS SURVEY, WHICH COULD HAVE UNDERGROUND LINES WITHIN ADJACENT RIGHTS-OF-WAY. THEREFORE, DHA DOES NOT ACCEPT RESPONSIBILITY FOR THE EXISTENCE OF UNDERGROUND TELECOMMUNICATIONS/FIBER OPTIC LINES WHICH ARE NOT MADE PUBLIC RECORD WITH THE LOCAL JURISDICTION. AS ALWAYS, CALL 1-800-424-5555 BEFORE CONSTRUCTION.

- NOTE:**
- PROPERTY LINES SHOWN HEREON GENERATED FROM KING COUNTY GIS AND ARE CONSIDERED APPROXIMATE IN LOCATION.
 - SANITARY AND STORM SEWER MANHOLE LOCATION SHOWN HEREIN ARE FROM CENTER OF LID. CENTER OF STRUCTURES ARE TO BE VERIFIED PRIOR TO ANY CONSTRUCTION.
 - WATER LINE ON NE 152ND STREET NOT LOCATABLE PER A.P.S.

Consultant:

This document, and the ideas and designs incorporated herein, are Instruments of Professional Service of Consor and are not to be used, reused, or modified, in whole or in part, by any other person for any other purpose without the express written authorization of Consor.

Sub Consultant:

50% SUBMITTAL

Engineer's Seal:

**PRELIMINARY
NOT FOR
CONSTRUCTION**

Client / Owner:

Small Town. Real Life.

Project Title:

**CITY OF DUVALL
BRUETT ROAD REPLACEMENT
PROJECT**

GENERAL
**GENERAL HORIZONTAL AND
VERTICAL CONTROL**

Designed By: KSR	Consor Project No.: W251856WA.01
Drawn By: EJJ	Issued On: NOVEMBER 2025
Checked By: JAM	Sheet: G-004
Approved By: APP	0 1/2 1 IF BAR DOES NOT MEASURE 1" DRAWING IS NOT TO SCALE

TOPOGRAPHIC LEGEND

	EXISTING	PROPOSED
WATERLINE	--- 10"W ---	— 12"DI W —
ELECTRICITY (UNDERGROUND)	--- E ---	— E —
OVERHEAD UTILITY	--- OVHD ---	— OVHD —
GAS	--- 4"G ---	— 4"G —
TELEPHONE/TELEMETRY	--- T ---	— T —
CABLE TELEVISION	--- CATV ---	— CATV —
COMMUNICATION	--- .COM ---	— COM —
FIBER OPTIC	--- FO ---	— FO —
SANITARY SEWER LINE	--- 8"SS ---	— 8"SS —
SANITARY SEWER FORCE MAIN	--- 6"SSFM ---	— 6"FM —
STORM DRAIN	--- 8"SD ---	— 8"SD —
DRAIN	--- D ---	— D —
CULVERT	--- 18"SD ---	— 18"SD —
ABANDONED PIPE	--- 10"W (ABAND) ---	//////////
DEMOLISH/ REMOVE		x x x x x x x x x x x x
DRAINAGE DITCH	---	---
TOP OF SLOPE TOP TOP
TOE OF SLOPE TOE TOE
CUT		— C —
FILL		— F —
BARBWIRE FENCE	— x — x — x —	— x — x — x —
CHAIN LINK FENCE	— o — o — o — o —	— o — o — o — o —
WOOD FENCE	— o — o — o — o —	— □ — □ — □ — □ —
TEMPORARY SILT FENCE		— □ — □ —
GUARDRAIL	o o o o o o o o o o	
ROCK WALL	-----	-----
TREE/BUSH LINE	~~~~~	
WETLAND	W	
CENTERLINE	---	---
RIGHT-OF-WAY	— RW —	— RW —
PROPERTY LINE	---	---
EASEMENT	---	---
EDGE OF PAVEMENT/AC	=====	=====
PAVEMENT STRIPING	=====	=====
EDGE OF GRAVEL	=====	=====
CURB	=====	=====
SIDEWALK	— S/W —	— S/W —
STRUCTURE OR FACILITY	▭	▭
CONTOUR MINOR	~ ~ ~	~ ~ ~
CONTOUR MAJOR	— 200 —	— 200 —

TOPOGRAPHIC LEGEND CONT

	EXISTING	PROPOSED
MANHOLE	⊙	●
CLEAN-OUT	⊙	○
CATCH BASIN/FIELD INLET	⊞	⊞
THRUST BLOCK	△	△
AIR INJECTION ASSEMBLY	⊞	⊞
BLOW-OFF VALVE	⊙	↑
AIR RELIEF VALVE	⊙	⊙
BUTTERFLY VALVE	⊙	⊙
GATE VALVE	⊙	⊙
PLUG VALVE	⊙	⊙
GATE VALVE, FL. X M.J.	⊙	⊙
GATE VALVE, M.J. X M.J.	⊙	⊙
FLANGE		
MECHANICAL JOINT	⊞	⊞
CAP/PLUG	⊞	⊞
COUPLING	⊞	⊞
ADAPTER, FL. x M.J.	⊞	⊞
HUB/PUSH ON	⊞	⊞
THREAD		
FIRE HYDRANT 3-NOZZLE	⊙	⊙
FIRE HYDRANT 2-NOZZLE	⊙	⊙
WATER METER	⊞	⊞
UTILITY POLE	⊙	⊙
GUY WIRE	—	—
LIGHT POST	☆	
MAILBOX	⊞	
SIGN	+	
BENCHMARK	⊙	
TREE DECIDUOUS	☁	☁
TREE CONIFEROUS	☁	☁
TREE TO BE REMOVED	☁	☁
SURFACE ELEVATION	+ 176.63	+ 176.63
WETLAND		
IRON ROD	○	
BORE	●	
MONUMENT	△	
PULL BOX/JUNCTION BOX	⊞	⊞
LONG SLEEVE	⊞	⊞
SAMPLE STATION	⊞	⊞
CONTROLLED DENSITY FILL	⊞	⊞
SURVEY CONTROL POINT	⊙	

GENERAL NOTE:

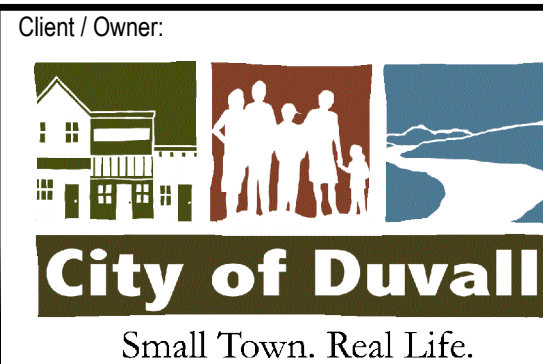
1. THIS IS A STANDARD CIVIL LEGEND, NOT ALL OF THE INFORMATION SHOWN MAY BE USED ON THIS PROJECT.



Consultant:
Sub Consultant:

50% SUBMITTAL

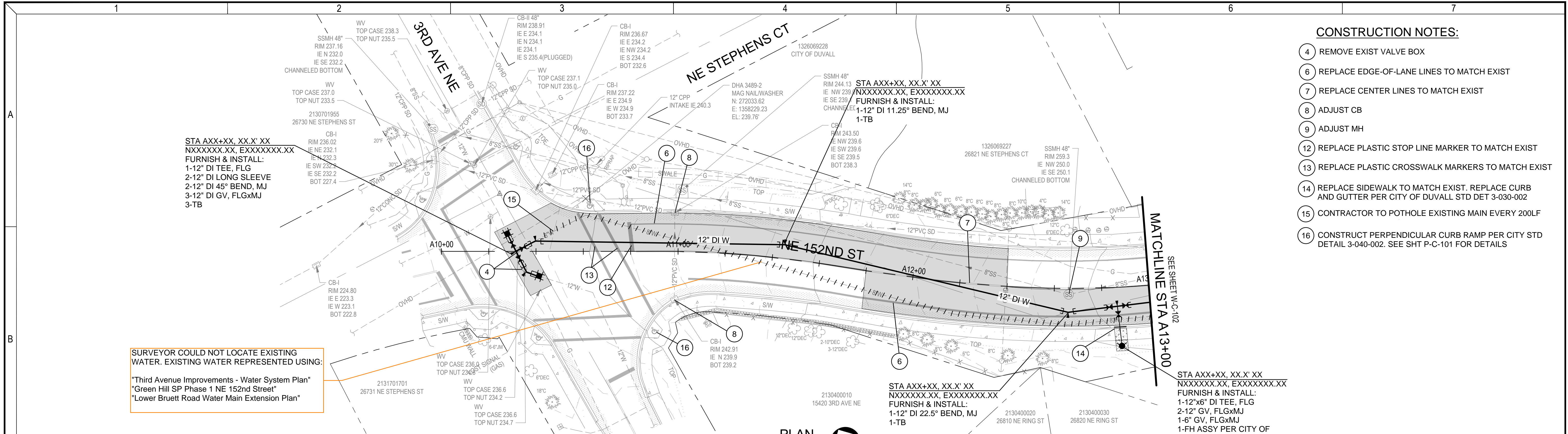
Engineer's Seal:
**PRELIMINARY
NOT FOR
CONSTRUCTION**



Client / Owner:
Project Title:
**CITY OF DUVALL
BRUETT ROAD REPLACEMENT
PROJECT**

CIVIL
CIVIL LEGEND AND SYMBOLS

Designed By: KSR	Consor Project No.: W251856WA.01
Drawn By: EJJ	Issued On: NOVEMBER 2025
Checked By: JAM	Sheet: C-001
Approved By: APP	0 1/2 1 IF BAR DOES NOT MEASURE 1" DRAWING IS NOT TO SCALE



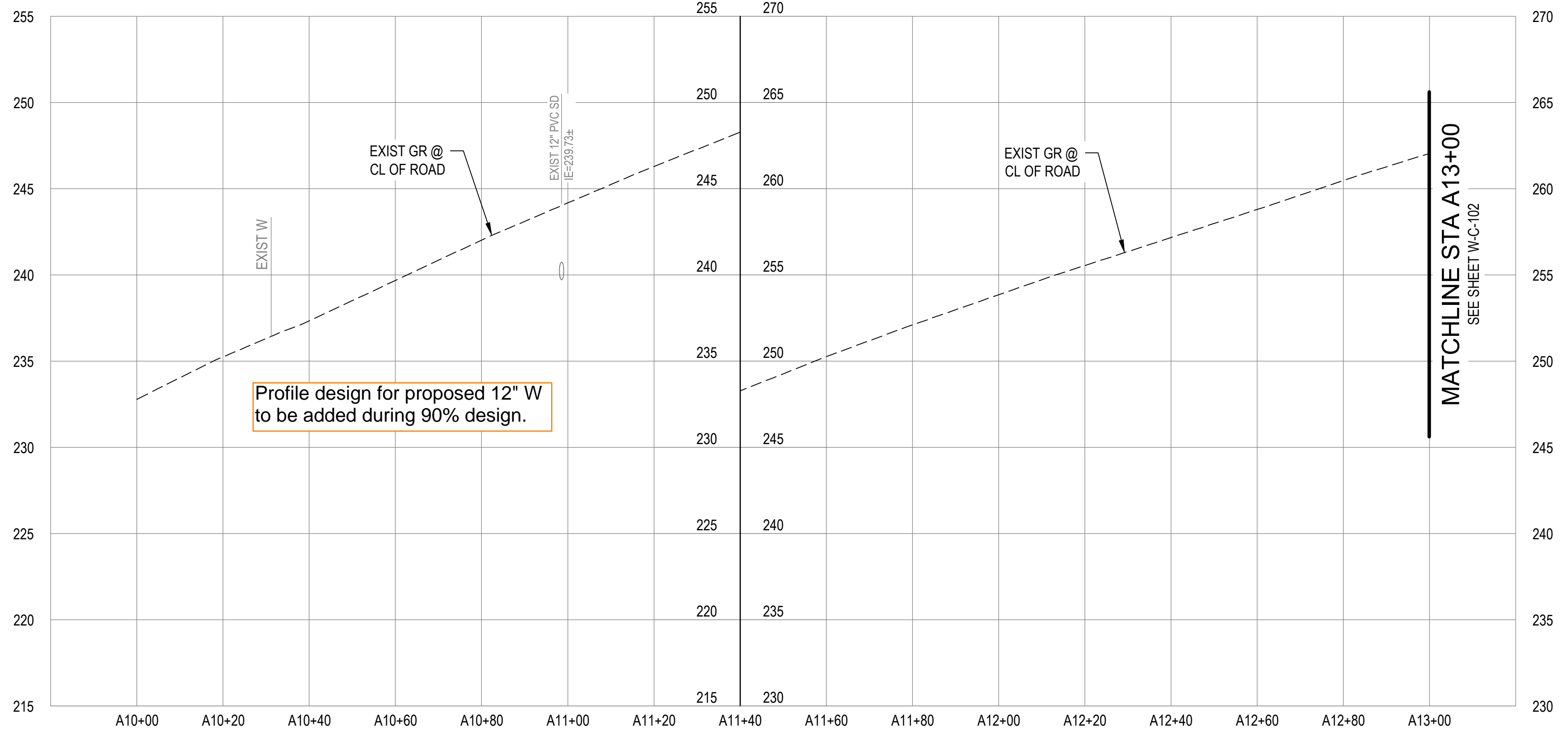
CONSTRUCTION NOTES:

- ④ REMOVE EXIST VALVE BOX
- ⑥ REPLACE EDGE-OF-LANE LINES TO MATCH EXIST
- ⑦ REPLACE CENTER LINES TO MATCH EXIST
- ⑧ ADJUST CB
- ⑨ ADJUST MH
- ⑫ REPLACE PLASTIC STOP LINE MARKER TO MATCH EXIST
- ⑬ REPLACE PLASTIC CROSSWALK MARKERS TO MATCH EXIST
- ⑭ REPLACE SIDEWALK TO MATCH EXIST. REPLACE CURB AND GUTTER PER CITY OF DUVALL STD DET 3-030-002
- ⑮ CONTRACTOR TO POTHOLE EXISTING MAIN EVERY 200LF
- ⑯ CONSTRUCT PERPENDICULAR CURB RAMP PER CITY STD DETAIL 3-040-002. SEE SHT P-C-101 FOR DETAILS

SURVEYOR COULD NOT LOCATE EXISTING WATER. EXISTING WATER REPRESENTED USING:
 "Third Avenue Improvements - Water System Plan"
 "Green Hill SP Phase 1 NE 152nd Street"
 "Lower Bruett Road Water Main Extension Plan"

RFI to City:
 - City to confirm existing water location
 - City to confirm existing meter sizes on W-C-103
 - City standard specifications and special provisions
 - City to confirm that the June 2021 details linked below are most recent version of standard details.
 "https://www.duvallwa.gov/DocumentCenter/View/313/Development-Design-Standards-Details"

PLAN
 SCALE: 1" = 20'

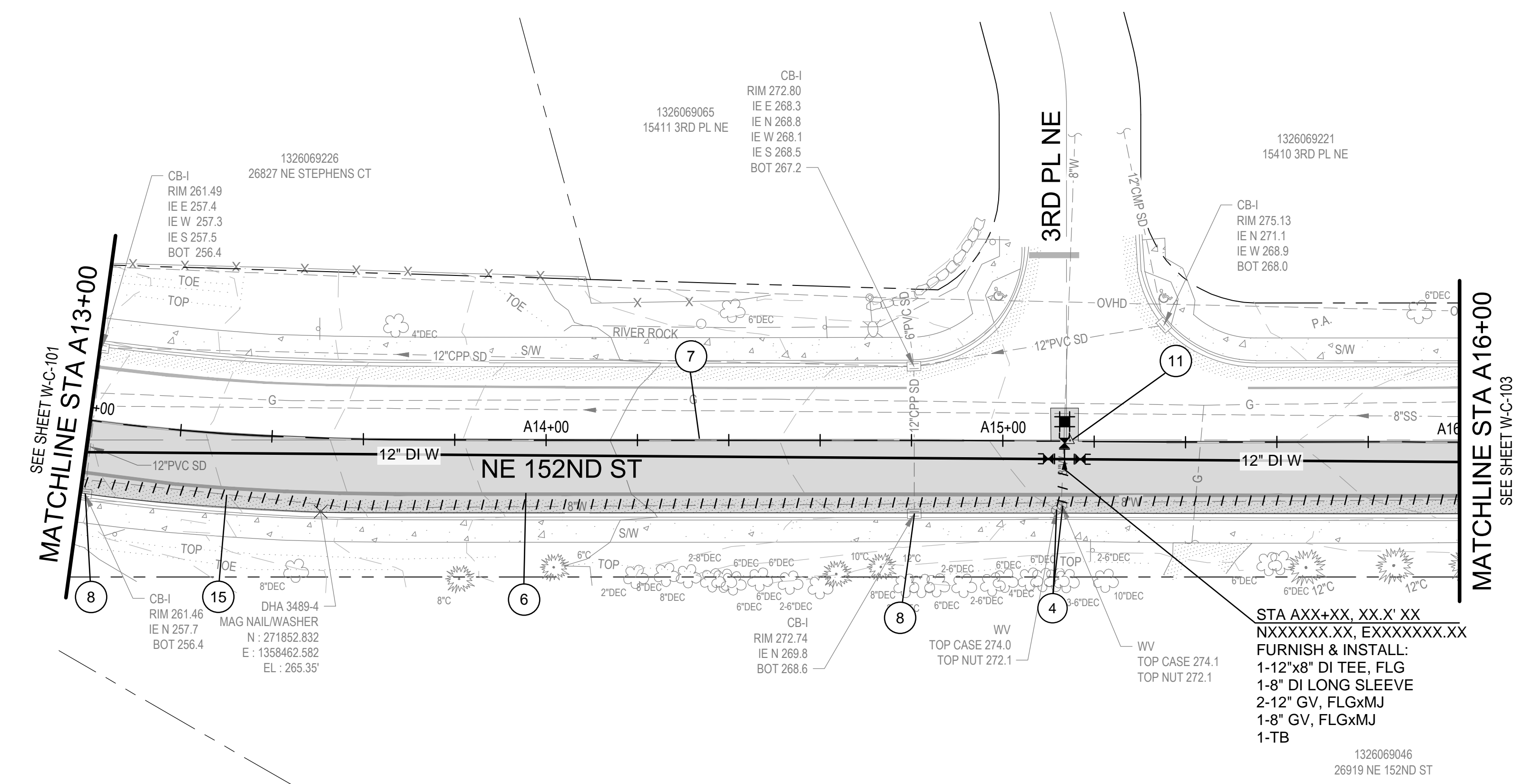


PROFILE
 SCALE: 1" = 20' HORIZ, 1" = 5' VERT

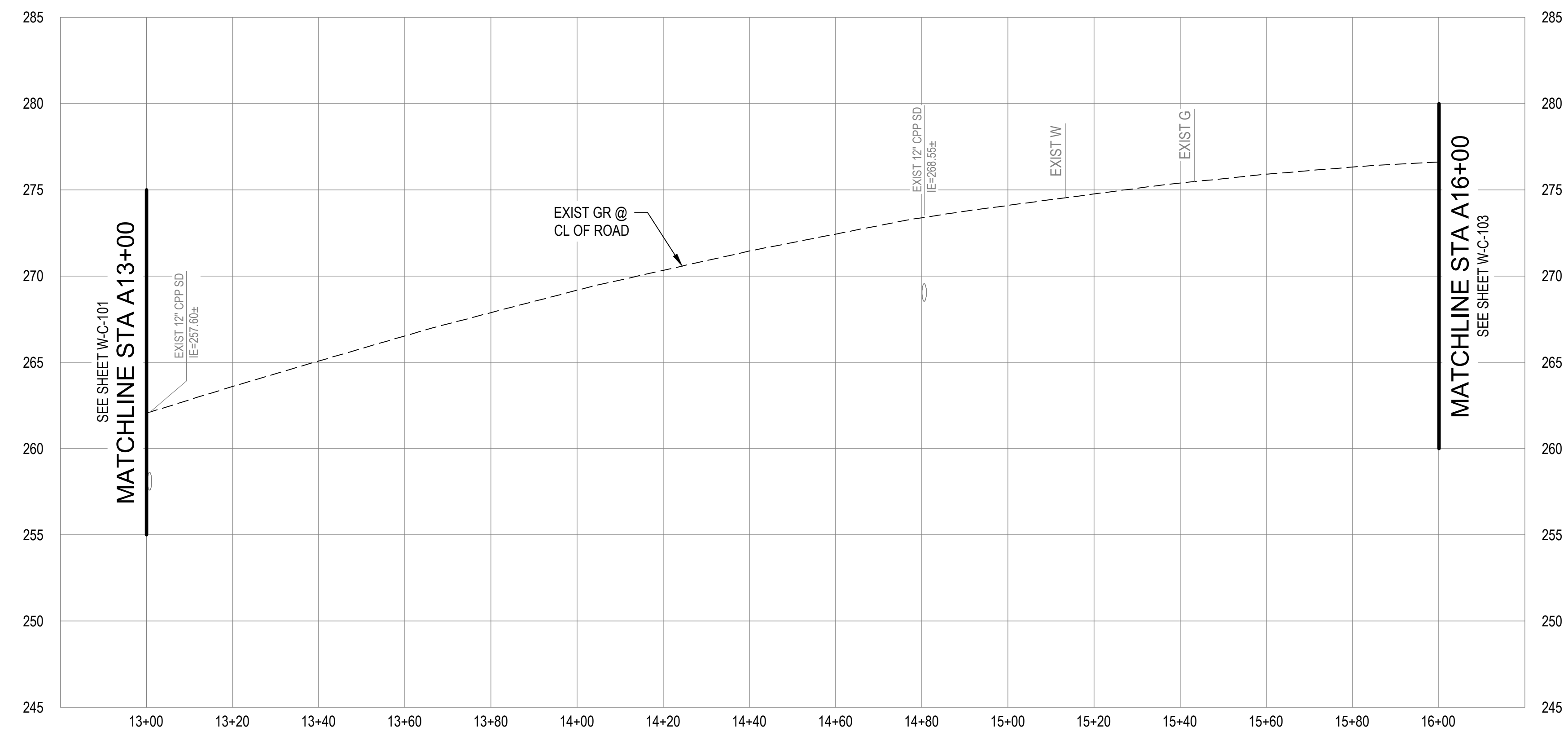
	<p>50% SUBMITTAL</p>	<p>PRELIMINARY NOT FOR CONSTRUCTION</p>		<p>CITY OF DUVALL BRUETT ROAD REPLACEMENT PROJECT</p>	<p>CIVIL</p>	Designed By: KSR	Consor Project No.: W251856WA.01
						Drawn By: EJJ	Issued On: NOVEMBER 2025
						Checked By: JAM	W-C-101
						Approved By: APP	

CONSTRUCTION NOTES:

- ④ REMOVE EXIST VALVE BOX
- ⑥ REPLACE EDGE-OF-LANE LINES TO MATCH EXIST
- ⑦ REPLACE CENTER LINES TO MATCH EXIST
- ⑧ ADJUST CB
- ⑪ REPLACE MON CASE AND COVER
- ⑮ CONTRACTOR TO POT HOLE EXISTING MAIN EVERY 200LF



PLAN
SCALE: 1" = 20'



PROFILE
SCALE: 1" = 20' HORIZ, 1" = 5' VERT

Consultant:

This document, and the ideas and designs incorporated herein, are Instruments of Professional Service of Consor and are not to be used, reused, or modified, in whole or in part, by any other person for any other purpose without the express written authorization of Consor.

Sub Consultant:

50% SUBMITTAL

Engineer's Seal:
**PRELIMINARY
NOT FOR
CONSTRUCTION**

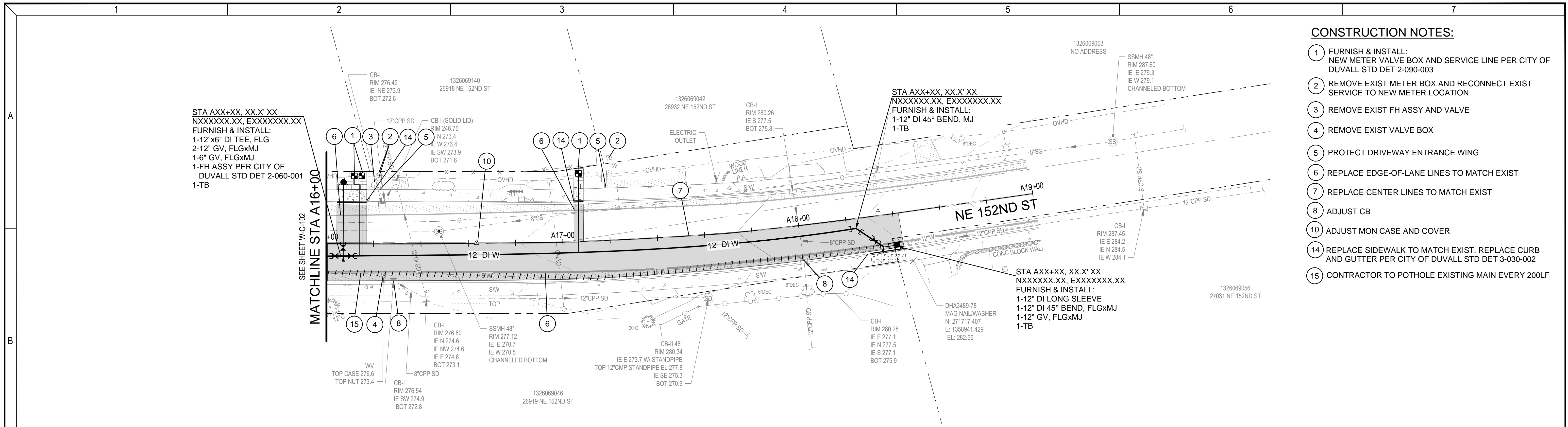
Client / Owner:

City of Duvall
Small Town. Real Life.

Project Title:
**CITY OF DUVALL
BRUETT ROAD REPLACEMENT
PROJECT**

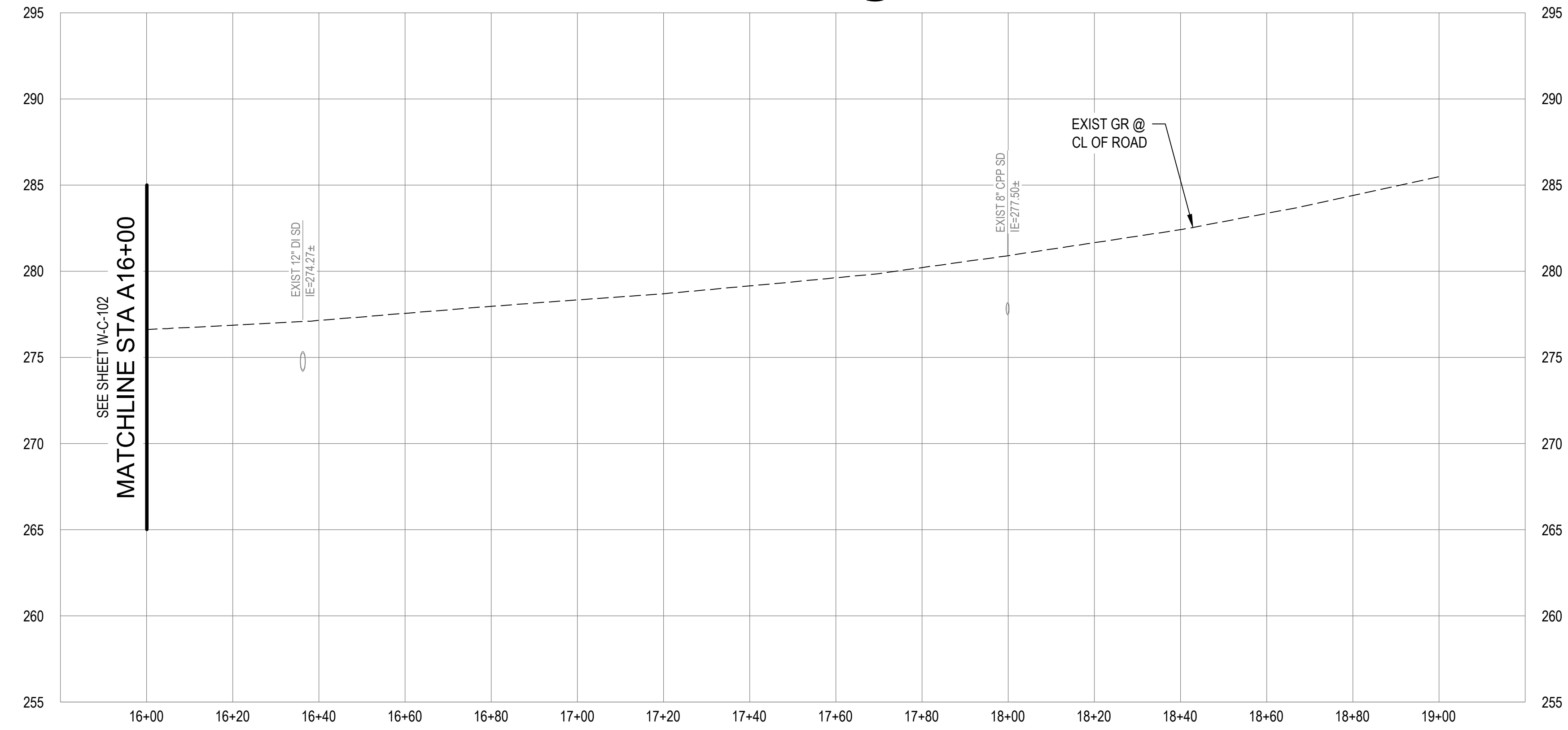
CIVIL
**WATER MAIN PLAN AND PROFILE
STA A13+00 TO STA A16+00**

Designed By: KSR	Consor Project No.: W251856WA.01
Drawn By: EJJ	Issued On: NOVEMBER 2025
Checked By: JAM	Sheet: W-C-102
Approved By: APP	0 1/2 1 IF BAR DOES NOT MEASURE 1" DRAWING IS NOT TO SCALE



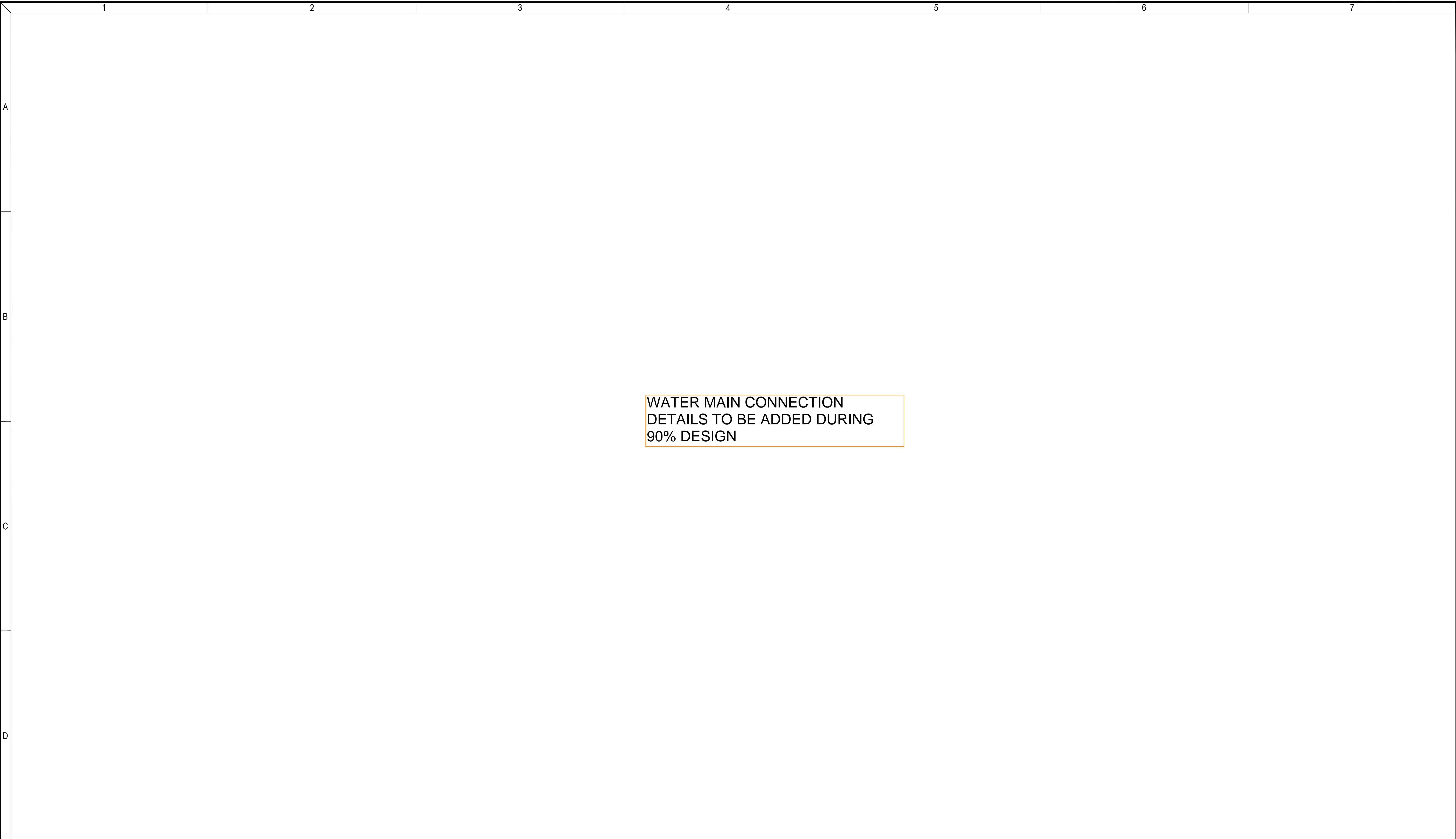
- CONSTRUCTION NOTES:**
- 1 FURNISH & INSTALL:
NEW METER VALVE BOX AND SERVICE LINE PER CITY OF
DUVALL STD DET 2-090-003
 - 2 REMOVE EXIST METER BOX AND RECONNECT EXIST
SERVICE TO NEW METER LOCATION
 - 3 REMOVE EXIST FH ASSY AND VALVE
 - 4 REMOVE EXIST VALVE BOX
 - 5 PROTECT DRIVEWAY ENTRANCE WING
 - 6 REPLACE EDGE-OF-LANE LINES TO MATCH EXIST
 - 7 REPLACE CENTER LINES TO MATCH EXIST
 - 8 ADJUST CB
 - 10 ADJUST MON CASE AND COVER
 - 14 REPLACE SIDEWALK TO MATCH EXIST. REPLACE CURB
AND GUTTER PER CITY OF DUVALL STD DET 3-030-002
 - 15 CONTRACTOR TO POT HOLE EXISTING MAIN EVERY 200LF

PLAN
SCALE: 1" = 20'



PROFILE
SCALE: 1" = 20' HORIZ, 1" = 4' VERT

<p>Consultant:</p> <p style="font-size: 8px;">This document, and the ideas and designs incorporated herein, are Instruments of Professional Service of Consor and are not to be used, reused, or modified, in whole or in part, by any other person for any other purpose without the express written authorization of Consor.</p>	<p>Sub Consultant:</p>	<h2 style="margin: 0;">50% SUBMITTAL</h2>	<p>Engineer's Seal:</p> <p style="text-align: center;">PRELIMINARY NOT FOR CONSTRUCTION</p>	<p>Client / Owner:</p> <p style="text-align: center;">City of Duvall Small Town. Real Life.</p>	<p>Project Title:</p> <p style="text-align: center;">CITY OF DUVALL BRUETT ROAD REPLACEMENT PROJECT</p>	<p>CIVIL</p>	<table border="1" style="width: 100%; border-collapse: collapse;"> <tr> <td style="font-size: 8px;">Designed By:</td> <td style="font-weight: bold;">KSR</td> </tr> <tr> <td style="font-size: 8px;">Drawn By:</td> <td style="font-weight: bold;">EJJ</td> </tr> <tr> <td style="font-size: 8px;">Checked By:</td> <td style="font-weight: bold;">JAM</td> </tr> <tr> <td style="font-size: 8px;">Approved By:</td> <td style="font-weight: bold;">APP</td> </tr> </table>	Designed By:	KSR	Drawn By:	EJJ	Checked By:	JAM	Approved By:	APP	<p>Consort Project No.: W251856WA.01</p> <p>Issued On: NOVEMBER 2025</p> <p style="text-align: center; font-weight: bold; font-size: 12px;">Sheet:</p> <p style="text-align: center; font-weight: bold; font-size: 14px;">W-C-103</p> <p style="font-size: 8px;">0 1/2 1 IF BAR DOES NOT MEASURE 1" DRAWING IS NOT TO SCALE</p>
Designed By:	KSR															
Drawn By:	EJJ															
Checked By:	JAM															
Approved By:	APP															



WATER MAIN CONNECTION
 DETAILS TO BE ADDED DURING
 90% DESIGN

<p>Consultant:</p>  <p><small>This document, and the ideas and designs incorporated herein, are Instruments of Professional Service of Consor and are not to be used, reused, or modified, in whole or in part, by any other person for any other purpose without the express written authorization of Consor.</small></p>	<p>Sub Consultant:</p>	<p>50% SUBMITTAL</p>	<p>Engineer's Seal:</p> <p>PRELIMINARY NOT FOR CONSTRUCTION</p>	<p>Client / Owner:</p>  <p>City of Duvall Small Town. Real Life.</p>	<p>Project Title:</p> <p>CITY OF DUVALL BRUETT ROAD REPLACEMENT PROJECT</p>	<p>CIVIL</p> <p>WATER MAIN CONNECTION DETAILS</p>	<p>Designed By: KSR</p> <p>Drawn By: EJJ</p> <p>Checked By: JAM</p> <p>Approved By: APP</p>	<p>Consor Project No.: W251856WA.01</p> <p>Issued On: NOVEMBER 2025</p> <p>Sheet: W-C-104</p> <p>0 1/2 1 IF BAR DOES NOT MEASURE 1" DRAWING IS NOT TO SCALE</p>
--	------------------------	-----------------------------	--	--	---	---	---	--

