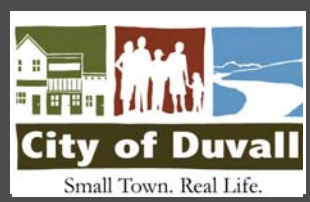




City of Duvall Parks, Trails, and Open Space Plan

City of Duvall
15535 Main Street NE
Duvall, WA 98019

November 2008



City of Duvall Parks, Trails, and Open Space Plan

**City of Duvall
15535 Main Street NE
Duvall, WA 98019**

November 2008

ACKNOWLEDGEMENTS

A special thanks to the following individuals who contributed to this effort:

CITY COUNCIL

Mayor	Will Ibershof Gérard Cattin Vicki Edwards Elizabeth Walker	Dianne Brudnicki Gary Gill Anne Laughlin Glen Kuntz
-------	---	--

PLANNING COMMISSION

Chair	Jeff Wolf	Holly Krueger
Vice-Chair	Amy Ockerlander Peter Luhrs Hilarie Cash	Skye King Jason Walker

CITY PLANNING STAFF

Planning Director/ City Hall Administrator	Cari Hornbein	Assistant Planner	Chris Green
Senior Planner	Lara Thomas	Adm. Assistant	Amy Bright

CITY PUBLIC WORKS STAFF

Director of Public Works Project Manager	Steven Leniszewski, P.E. Alana McCoy	City Engineer Engineering Aide	Boyd Benson, P.E. Sara Ruhland
---	---	-----------------------------------	-----------------------------------

PARK ADVISORY COMMITTEE

Boyd Benson Doreen Booth Amy Bright Gary Gill Cari Hornbein	Skye King Steven Leniszewski Alana McCoy Lara Thomas
---	---

PLAN PREPARED BY

EDAW, Inc.

TABLE OF CONTENTS

1. INTRODUCTION 1
 REGULATORY FRAMEWORK 3
 Relationship to Growth Management Act (GMA)..... 3
 Recreation and Conservation Office (RCO) Guidelines 3
 METHODOLOGY 3

2 PURPOSE AND VISION 7
 PURPOSE 7
 VISION 8

3 BENEFITS OF PARKS, TRAILS, AND OPEN SPACE..... 9
 ECONOMIC BENEFITS 9
 INDIVIDUAL AND COMMUNITY BENEFITS 9
 ENVIRONMENTAL BENEFITS 10

4 PARKS, TRAILS, AND OPEN SPACE GOALS AND POLICIES 11

5 EXISTING PARKS, TRAILS, RECREATION FACILITIES, AND OPEN SPACE 17
 POCKET PARKS 17
 NEIGHBORHOOD PARKS..... 18
 COMMUNITY PARKS 18
 REGIONAL PARKS 19
 TRAILS 19
 OPEN SPACE..... 20
 SCHOOL SITES/PARKS..... 20

6 DEMAND 33
 DEMOGRAPHIC TRENDS..... 33
 REGIONAL AND STATEWIDE RECREATION PARTICIPATION AND DEMAND 34
 DUVALL HOUSEHOLD SURVEY 39
 Response Rate 41
 Household Profile 41
 Parks, Trails, and Open Space Preferences and Priorities 42

7 LEVEL OF SERVICE (LOS) STANDARDS 47

8 20-YEAR PARKS, TRAILS, AND OPEN SPACE SYSTEM..... 51
 EXISTING SERVICE AREA ANALYSIS 51
 Pocket Parks..... 51
 Neighborhood Parks 52
 Community Parks 55
 Non-Motorized Trails and Open Space..... 55
 Summary of City Existing LOS..... 57
 FUTURE PARKS, TRAILS, AND OPEN SPACE (20-YEAR SYSTEM) 59
 Neighborhood Parks 59
 Community Parks 62
 Trails and Open Space..... 62
 20-YEAR PARKS, TRAIL, AND OPEN SPACE SYSTEM..... 66
 Open Space for Habitat Value and Enhancement..... 72
 Operations and Maintenance 72

9 IMPLEMENTATION AND NEXT STEPS..... 73
 PLAN FINANCING OPTIONS 73
 Short-term Options..... 73
 Long-term Options 74
 PLAN LAND ACQUISITION OPTIONS 74

Short-term Options..... 74
Long-term Options 75
PLAN OPERATIONAL OPTIONS 75
Short-term Options..... 75
Long-term Options 76
PARTNERSHIPS 77
Short-term Options..... 77
Long-term Options 77
INTERNAL POLICIES 79
Short-term Policies..... 79
Long-term Policies 79
10 REFERENCES..... **81**

LIST OF TABLES

Table 5-1. Inventory of Existing City-Owned Parks and Open Space. 22
Table 5-2. Inventory of Non-City Operated Park and Trail Facilities Near Duvall..... 24
Table 5-3. Opportunities and Constraints for Parks, Trails, and Open Space in Duvall..... 27
Table 6-1. Regional and Statewide Activity Participation Rates. 35
Table 6-2. Participation Estimates for Duvall and King County 35
Table 6-3. Anticipated Statewide Changes in Recreation Activity Participation. 38
Table 7-1. City of Duvall Parks and Recreation LOS Standards. 49
Table 7-2. NRPA Parks and Recreation LOS Standards. 49
Table 8-1. City of Duvall Parks and Recreation Existing Service Area LOS..... 57
Table 8-2. City of Duvall Parks and Recreation Existing Population Ratio LOS. 57
Table 8-3. City of Duvall Parks and Recreation Existing Population Ratio LOS and Additional
Acreage and Facilities Needed to Achieve the NRPA Recommended LOS for the
Next 20 Years..... 58
Table 8-4. Effect of Proposed Parks on City Park LOS..... 60
Table 8-5. Capital Improvement Program. 69

LIST OF FIGURES

Figure 5-1. City-Owned Parks, Trails, and Open Space Facilities 25
Figure 5-2. Sidewalks, Bike Lanes and Trails 26
Figure 6-1. Typical Participation in Recreation Activities at Duvall Parks, Trails, and Open Space
Areas..... 43
Figure 6-2. Satisfaction with Current Parks, Trails, and Recreation Facilities in Duvall. 44
Figure 8-1. Pocket Park Service Area Analysis 53
Figure 8-2. Neighborhood Park Service Area Analysis..... 54
Figure 8-3. Community Park Service Area Analysis..... 56
Figure 8-4. Proposed Neighborhood Parks 61
Figure 8-5. Proposed Community Parks 63
Figure 8-6. Proposed Trail System 64
Figure 8-7. City of Duvall Potential Future Parks and Trails 67
Figure 8-8. Phasing of the City of Duvall Potential Future Parks and Trails 68

APPENDICES

- Appendix A:** Record of Stakeholder Involvement
- Appendix B:** Detailed Parks, Trails, and Open Space Inventory
- Appendix C:** Population and Demographic Information; Participation and Demand Data
- Appendix D:** Detailed Survey Results
- Appendix E:** Conceptual Layouts of Parks and Trails
- Appendix F:** Additional Park, Trail, and Recreation Funding Sources

ACRONYMS AND ABBREVIATIONS

AASHTO	American Association of State Highway and Transportation Officials
ADA	Americans with Disabilities Act
BBQ	barbeque
CIP	Capital Improvement Plan
CTED	Washington State Department of Community, Trade, and Economic Development
GMA	Washington State Growth Management Act
IAC	Washington State Interagency Committee for Outdoor Recreation (now known as the Recreation and Conservation Office, or RCO)
LOS	level of service
NRPA	National Recreation and Park Association
OFM	Washington State Office of Financial Management
ORV	off-road vehicle
PSE	Puget Sound Energy
RCO	Washington State Recreation and Conservation Office (previously known as the Interagency Committee for Outdoor Recreation, or IAC)
SEPA	State Environmental Policy Act
UGA	Urban Growth Area
UGAR	Urban Growth Area Reserve

1. INTRODUCTION

Nestled in the heart of the Snoqualmie Valley, Duvall is a community rich in heritage. Duvall boasts significant waterfront along the Snoqualmie River, an historic downtown district, and a diverse community. The small-town feel and strong sense of community have attracted residents to Duvall for many years. Parks, trails, and open space resources throughout Duvall augment the city’s scenic setting, community character, and rural feel. The recreational options available throughout the city are varied and attract numerous users.

Recently, substantial new residential development has occurred in Duvall, and the city continues to grow at a rapid pace. Duvall’s population is projected to more than double between 2008 and 2022. To protect significant park, trail, and open space resources important to the community, and to continue providing recreation opportunities for its growing citizenry, the City must plan for future parks, trails, and open space needs. This long-range plan describes a 20-year vision for parks, trails, and open spaces in the City of Duvall and its vicinity.

The Parks, Trails, and Open Space Plan provides a framework for parks, trails, and open spaces within the city and plans for future development over the next 20 years. The plan is based on an analysis of existing conditions, residents’ needs and interests, regional and local trends, and demand for parks, trails, and recreation facilities. The plan not only

addresses the City’s current parks, trails, and open space needs, but also the changing needs of a growing city. The plan identifies gaps in the existing park, trails, and open space network, and plans for how the City can provide services to all current and future Duvall residents. Because a dynamic population will likely change over time, no long-range plan can be certain of the characteristics of a



population over a 20-year period. Therefore, the plan will most effectively meet the needs of Duvall residents if it is updated on an ongoing basis to ensure that the plan remains responsive to actual conditions in Duvall.

This plan recognizes the contribution of extensive planning work already completed by the City, including the following:

- 2006 City of Duvall Comprehensive Plan
- Unified Development Regulations (Title 14, Duvall Municipal Code)
- Economic Development Strategic Action Plan: 2006-2011 (Berk & Associates 2005)
- City-Wide Visioning Plan (City of Duvall 2003)
- Downtown Sub-Area Plan (City of Duvall 2004b)

Throughout the development of this plan, the City provided numerous opportunities for residents and stakeholders to provide input and feedback on the plan (detailed in Appendix A). Additionally, the City's 6-year Capital Improvement Plan (CIP) and Parks and Recreation Element (both components of the Comprehensive Plan) reflect the conclusions reached in this document. The plan also ensures the City's eligibility for Washington State Recreation and Conservation Office (RCO) grant programs.

The plan is organized into eight primary sections:

- Purpose and Vision
- Benefits and Outcomes of Parks and Recreation
- Parks, Trails, and Open Space Goals and Policies
- Existing Parks, Recreation Facilities, Trails, and Open Spaces
- Recreation Demand, including results of a survey and demographic trends
- Level of Service (LOS) Standards
- 20-Year Parks, Trails, and Open Space System
- Implementation and Next Steps

Collectively, these eight sections define the City's long-term vision and priorities for parks, trails, and open space, describe the City's existing system, summarize public feedback, and identify the steps necessary to achieve the community's vision over the next 20 years.

Regulatory Framework

Relationship to Growth Management Act (GMA)

In 2002, the Washington Legislature mandated that a Parks and Recreation Element be added to a city's GMA comprehensive plan. This element must be consistent with the parks and recreation section of the capital facilities plan. In addition, the element should include estimates of 10-year demand for parks and recreation, an evaluation of the need for facilities and



services, and an assessment of regional approaches to meet park and recreation demand through intergovernmental coordination. Components from the Parks, Trails, and Open Space Plan will be incorporated in the Parks and Recreation Element of the City's Comprehensive Plan to meet GMA requirements.

Recreation and Conservation Office (RCO) Guidelines

To be eligible for some of the RCO grant funding programs supporting the development of parks, trails, and recreation facilities, the City must have an adopted Park Plan on file with the RCO. The RCO requires planning to demonstrate that each grant proposal was developed using an appropriate process. The RCO also encourages planning to help with decision making, coordinating interests, prioritizing needs and actions, evaluating trends and programs, budgeting and justifying expenses, ensuring continuity of direction with changes in elected officials, and providing opportunities for public involvement and information dissemination (RCO 2008a). The plan must include the following elements:

1. Goals and objectives
2. Inventory of existing park, trails, and open space facilities
3. Record of public involvement
4. Demand and needs analysis
5. Capital improvement plan
6. Adoption of the plan

With these planning requirements met, the City is eligible for RCO grants for up to 6 years from the date of plan adoption.

Methodology

The Park, Trails, and Open Space Plan was developed over a year-long process of gathering information, assessing public demand and needs, analyzing future park, trails, and open space needs for the City, and refining alternatives. After the initial data

gathering steps, update of the inventory, and review of past planning work, a thorough analysis was undertaken to objectively identify gaps in service related to parks, trails, and open space. Public input helped to identify recreation needs and demand, which were then analyzed and developed into proposed concepts for future parks, trails, and open space in Duvall.

Public involvement was instrumental in many aspects of the plan development. Several mechanisms were used to engage the public and gather information, analyze needs, assess demand, and develop the proposed 20-year plan, including the following:

- Five Advisory Committee meetings (February 13, March 12, June 17, July 22, and November 12, 2008)
- Stakeholder engagement meetings on February 26, 2008, with interested parties
- Public meeting on March 25, 2008
- Household survey administered between May 2, 2008, and June 6, 2008
- Joint Planning Commission and City Council workshop, open to the public, on August 7, 2008
- Public review of draft plan from August 18 through November 14, 2008
- Joint Planning Commission and City Council workshop, open to the public, on November 6, 2008
- Public hearing at Planning Commission on December 4, 2008
- Public hearing at City Council on December 11, 2008

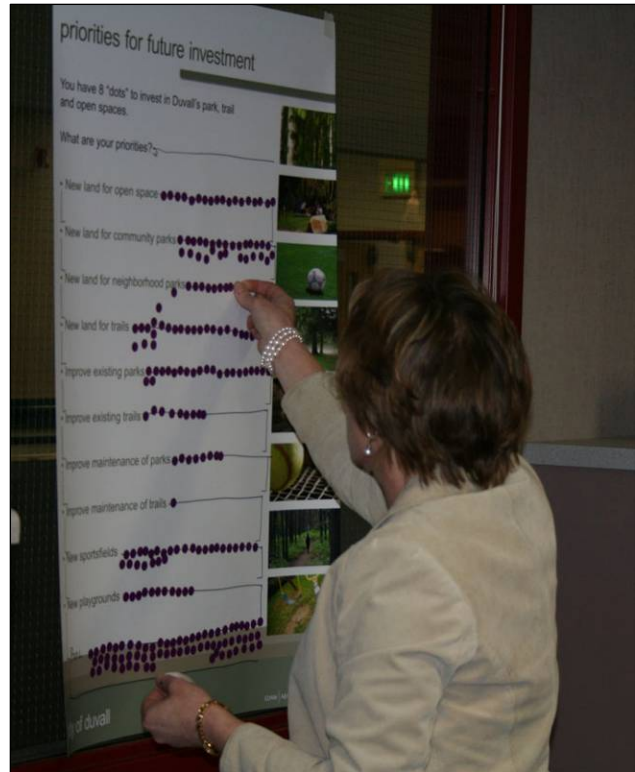
A park Advisory Committee was formed at the onset of development of this plan. This committee was made up of City staff from the Planning and Public Works Departments, as well as representatives from the City Council and Planning Commission. The Advisory Committee was instrumental in making decisions regarding the progression of the plan, including setting goals and policies, recommending level of service standards, and planning for public involvement activities.

Public involvement began early in the development of the plan. A variety of local and regional groups with interest in parks, recreation, trails, and open space were invited to participate in stakeholder engagement meetings. Park planners gathered information regarding the specific needs and desires of participating groups and gave feedback about priorities for park, trail and open space development. A complete record of



information gathered in these meetings is contained in Appendix A. This feedback was used to frame questions for the household survey, and ideas were carried forward into the development of this plan.

In March 2008, the City held a public meeting to elicit ideas regarding parks, trails, and open space needs in Duvall. Participants were provided background on the planning and analysis process, and then asked to offer suggestions and priorities for the parks, trails, and open spaces. Many of the ideas were carried forward into the plan, and are included in Appendix A. Appendix A also includes a map of the future facility locations suggested by each of the break-out groups.



A statistically valid area household survey was conducted in May and June 2008. The City gathered information about city residents' needs and demands for parks, trails, recreation facilities, and open spaces. These results indicate residents' and stakeholders' perception of the overall recreation needs for the community.

Public input was also collected at the joint Planning Commission and City Council workshops on August 7 and November 6, 2008. Public comment was solicited regarding the draft Parks, Trails, and Open Space Plan from August to November 2008. Public hearings on the plan were held with the Planning Commission on December 4, 2008, and City Council on December 11, 2008.



2 PURPOSE AND VISION

Purpose

The City of Duvall recognizes the importance of parks, trails, and open space resources for use by its citizens. Public parks and natural open space enhance the natural character of the city and rural feeling of the community. To maintain these resources in the future, and to continue to provide valuable park resources for its citizenry, the City embarked on preparing this plan. This plan articulates a clear, long-term vision for Duvall's parks, trails, and open space. In addition, it provides a strategy for future implementation of supporting actions. This long-term vision and strategy were developed by analyzing existing City parks and recreation facilities, documenting trails and open space resources, determining where the current parks, trails, and open space system could be enhanced to meet the needs of existing Duvall residents, and identifying future parks, trails, and open space necessary to achieve level of service (LOS) standards as the City's population continues to grow. This plan also identifies critical parkland locations prior to development so that key areas remain available for public use.



The plan's recommendations are structured to be easily translated into other City plans and documents. For instance, this plan recommends parks and recreation facilities for inclusion in the City's 6-Year Capital Improvement Plan (CIP) process. New facilities (proposed in Chapter 8) are phased so that recreation facility needs can be met in a series of acquisitions, developments, and implementation measures that recognize the City's funding cycles and competing capital facility needs over time.

The plan also ensures the City's eligibility for Recreation and Conservation Office (RCO) parks and trails grants for 6 years into the future.

Vision

Recognizing that parks, trails, and open space are fundamental elements of what makes a community a great place to live and work, the City of Duvall will enhance existing parks and trails as well as provide additional high-quality parks, trails, and open space opportunities over the next 20 years.

Parkland, trails, and open space provide natural, economic, and physical health benefits for all Duvall residents. Parks provide places for residents to play, children to grow strong, older adults to maintain their health, and families and friends to enjoy time together. Natural open space, vegetation, and waterways help clean the air and water, provide habitat for sensitive species, protect environmentally critical areas, and minimize local flooding. Public parks and trails also play important roles in increasing local property values, growing the local tax base, contributing to environmental education, helping reduce area crime, and attracting important local jobs and businesses.

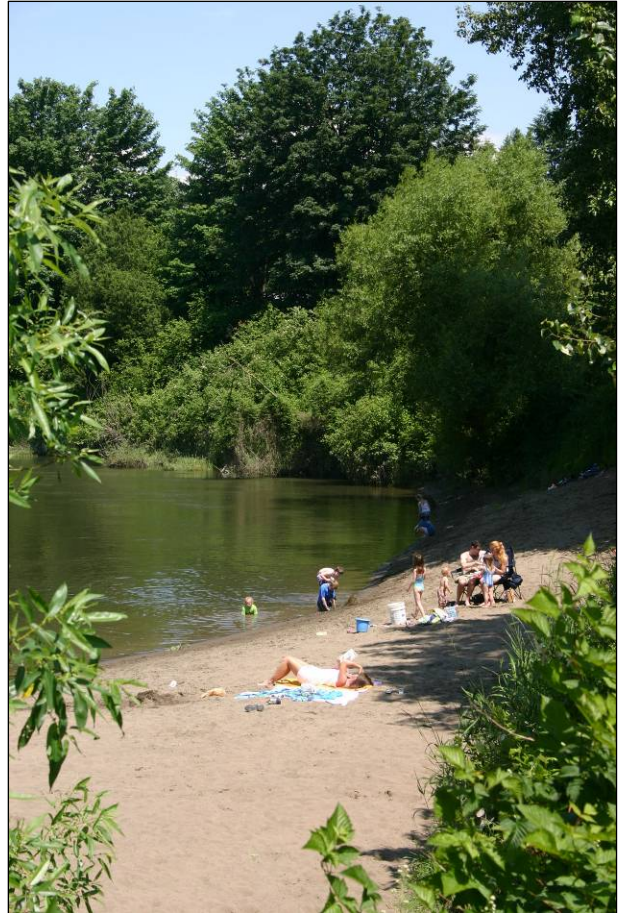
Trails and open space corridors are critical for a sustainable, pedestrian-oriented community. These corridors provide important linkages to parks and provide non-motorized access opportunities between residential areas, schools, downtown commercial areas, and community facilities. Trail linkages can also provide access to areas outside the City limits. Trails provide access to the City's high-quality natural resources, including the Snoqualmie River and Lake Rasmussen. In addition, parks and open space help preserve Duvall's unique historic heritage and visual quality while helping to maintain an identifiable edge between the City and its agricultural and forested surroundings.

The vision of the plan is to guide development, preservation, and enhancement of parks, trails, and open space to meet the desires of the citizens, achieve the City's comprehensive planning goals, and protect the rural character and sense of community in Duvall for the next 20 years. An increasing population will likely mean more participants in recreation activities; as such, there will be a greater demand placed on existing and potential future parks, trails, and open space areas. Notable components of the vision for parks, trails, and open space include providing a network of trails and pedestrian-friendly connections throughout the city, enhancing the level of service to citizens from parkland and facilities, improving existing community parks, and maintaining the small-town character of the city.

3 BENEFITS OF PARKS, TRAILS, AND OPEN SPACE

Adequate parks, trails, and open space are essential elements of a high-quality community. Over the past several decades, the National Recreation and Park Association (NRPA) has been a leader and advocate in communicating and promoting the various benefits of parks, recreation, trails, and open space. Countless park and recreation agencies around the country have adopted NRPA's slogan of "*the benefits of parks and recreation are endless*" (NRPA 2007a). Public parks, trails, and open space provide areas for exercising, holding family and community activities, participating in sports, and enjoying wildlife and the outdoors, among others.

The benefits of parks, trails, and open space are typically summarized in three overall categories (economic, individual and community, and environmental benefits) and include, among others, the following (NRPA 2007b, TPL 2005, TPL 2007):



Economic Benefits

- Contribute to increased property values on adjacent properties, thereby increasing property tax revenue.
- Increase spending in the retail and service industries by providing a place for planned local activities that bring visitors into town.
- Create short-term and long-term employment opportunities for local residents by attracting tourists/visitors.
- Help to attract new businesses through an improved standard of living, thereby boosting the local economy.
- Minimize costs associated with new stormwater infrastructure by using the natural ecosystem including wetlands and riparian vegetation.

Individual and Community Benefits

- Provide opportunities for individuals of all ages and abilities to be physically active, socially engaged, and cognitively stimulated.
- Stimulate participation in personal health and fitness activities and contribute to full and meaningful lives through mental and physical health.

- Strengthen community bonds and encourage interactions between residents.
- Provide a place for organized activities for local youth, seniors, and others, while also fostering a sense of community pride.
- Reduce stress through opportunities for rest, relaxation, and revitalization.
- Help ensure an overall higher quality of life.
- Contribute to children’s play and general activity, an essential component of early childhood development.
- Provide safe places for youth.
- Preserve and interpret historic community assets.
- Provide opportunities for community involvement, as well as a sense of responsibility for natural resources.
- Promote sensitivity to ethnic cultural diversity.
- Supply emergency housing and evacuation sites during catastrophic events.
- Reduce stress and create a general sense of peace and clarity using native vegetation.
- Provide opportunities for open-ended, creative play and learning for children within parks and open space.



Environmental Benefits

- Allow for the protection and preservation of vital green spaces, critical wildlife habitat, and natural processes.
- Expose individuals to the environment/natural processes and help promote environmental stewardship.
- Provide educational opportunities for visitors regarding the appropriate use of natural areas.
- Contribute to clean air and water by removing toxins in groundwater and surface waters.
- Maintain the original water flow/runoff to reduce potential erosion, flooding, and the need for new stormwater infrastructure.

The benefits and outcomes of the City’s park, trail, and open space system are described through the goals and policies, provided in Chapter 4 of this plan.

4 PARKS, TRAILS, AND OPEN SPACE GOALS AND POLICIES

The development of goals and policies for parks, trails, and open space began with the goals and policies in the 2004 Comprehensive Plan. These goals and policies were updated based on completed actions and were refined and enhanced to reflect the City's current goals and policies regarding parks, trails, and open space. The goals and policies prepared for this plan are carried forward in the 2008 Comprehensive Plan update.

The City's overall parks, trails, and open space values and priorities are expressed in the following goals and policies. Because parks and recreation



play such varied roles within a community and create a wide range of benefits, the City's parks and recreation goals and policies are classified into nine categories:

1. Provide recreation opportunities for all ages and interest groups.
2. Effectively and efficiently develop, manage, and maintain park, recreation, trails, and open space resources.
3. Protect and preserve significant natural resource areas and features.
4. Preserve and enhance cultural and historical resources within Duvall.
5. Develop a comprehensive system of multi-purpose trails and corridors that connect environmental features, public facilities, schools, neighborhoods, and business districts;
6. Promote community health and quality of life.
7. Promote interpretation and education programs in the parks, trails, and open space system.
8. Implement and update the 2008 Parks, Trails, and Open Space Plan.
9. Establish balanced and consistent funding sources for implementing the goals, policies, and plans of the Comprehensive Plan and the Parks, Trails, and Open Space Plan.

Goals and policies for each of these categories are described below.

Goal 1: Provide recreation opportunities for all ages and interest groups (e.g., recreation user groups, school groups, religious groups, seniors, etc.).

Policies

- 1.1 Support the development of a park network with a broad range of recreational opportunities that extends to all neighborhoods and serves residents of all ages.
- 1.2 Encourage the development of a diverse system of active (e.g., sports play fields, skate parks, playgrounds, etc.) and passive (e.g., open space corridors, wildlife preserves, etc.) parks, facilities, trails, and open spaces.
- 1.3 Cooperate with other public and private agencies and landowners to acquire and preserve additional waterfront access for recreational activities and pursuits.
- 1.4 Pursue the acquisition of additional property for the expansion of existing recreation facilities, including those that are heavily used and highly regarded.
- 1.5 Provide appropriate support facilities such as restrooms, parking, paths, lighting, and security measures to allow safe, accessible, and comfortable use of the park system.
- 1.6 Support the continued use of the Duvall Community Center as a community-wide learning center.
- 1.7 Support the development of shared and multiple-use facilities that serve a broad range of groups and community activities (e.g., athletics, performing arts, community meetings, etc.) on a year-round basis.
- 1.8 Support collaborative use agreements between the school district, recreational organizations, park users, and the City of Duvall.
- 1.9 Encourage the development of recreation programs and facilities for all demographic sectors including citizens with physical and developmental disabilities.
- 1.10 Improve existing parks to meet the needs of existing and future park users.
- 1.11 Support private and non-profit recreation providers. Work with private recreation providers to explore the feasibility of private facilities in the long term.
- 1.12 Create public spaces or commons in association with the development of public educational and institutional uses.
- 1.13 Review and update the McCormick Park Plan to determine long-range site potential. The plan should be based on an updated inventory of the park and determine the extent of potential active and passive park use.
- 1.14 Support an open space requirement in all new residential developments, and require that these open spaces include appropriately scaled active and passive recreation features (benches, play structures) to serve project-based need for these facilities. These requirements shall be implemented through the Duvall Municipal Code Title 14, Unified Development Regulations.

Goal 2: Effectively and efficiently develop, manage, and maintain park, recreation, trails, and open space resources.

Policies

- 2.1 Develop, operate, and maintain parkland, facilities, and open space using a variety of funding sources.
- 2.2 Adequately maintain parks, trails, and open space through staff resources and volunteer efforts.
- 2.3 Encourage sustainable and low-impact development techniques while designing and developing facilities that are low maintenance and of high-capacity design, using low-maintenance materials and other value engineering considerations.
- 2.4 Consider ongoing maintenance costs and how these needs will be addressed prior to the development of new park facilities or expansion of existing facilities.
- 2.5 Encourage sharing costs for development and maintenance of joint-use facilities.
- 2.6 Develop an “Adopt-a-Park” program to offer opportunities for community members to improve and maintain parks.
- 2.7 Support the inclusion of public art in parks throughout the city.
- 2.8 Plan and develop the vacant and/or underutilized park properties currently owned by the City.
- 2.9 Support the development of park, trail, and open space projects identified in the Capital Improvement Plan.
- 2.10 Pursue the acquisition and development of an urban park in the Old Town area.

Goal 3: Protect and preserve significant natural resource areas and features.

Policies

- 3.1 Preserve and protect significant environmental features that reflect Duvall’s natural heritage.
- 3.2 Preserve and protect sensitive areas including wetlands, open space, woodlands, streams and stream corridors, steep slopes, shorelines, and other unique natural features.
- 3.3 Ensure that park development adjacent to the Snoqualmie River and area streams protects and/or enhances critical salmon habitat.
- 3.4 Ensure that activities in McCormick Park and



- Taylor's Landing are in compliance with the adopted Shoreline Management Program and Sensitive Area Regulations.
- 3.5 Encourage the implementation of appropriate natural resource projects within the parks, trails, and open space system, such as those detailed in the Habitat Assessment Existing Conditions Report (Herrera 2002), Fish Habitat Restoration Plans (Herrera 2002), and future studies.
 - 3.6 Pursue the acquisition of additional undeveloped open space adjacent to the Snoqualmie River.
 - 3.7 Pursue the acquisition of appropriate land throughout the city and Urban Growth Area (UGA) to be used for future parks, trails, and/or open space.
 - 3.8 Identify additional undeveloped land for parks within the city and UGA.
 - 3.9 Encourage the preservation and/or restoration of native vegetation in natural areas and open space throughout the city and control the spread of noxious weeds.
 - 3.10 Foster and promote environmental stewardship, responsibility, and awareness within the city.

Goal 4: Preserve and enhance cultural and historical resources within Duvall.

Policies

- 4.1 Work with historical and cultural resource groups to incorporate community activities into the park and recreation system.
- 4.2 Incorporate historic and cultural lands, sites, artifacts, and facilities into the park system.
- 4.3 Support the development of facilities and agricultural activities at historic farmstead(s) by private and/or non-profit organizations.
- 4.4 Support the maintenance of public sites or properties on or eligible for the National Register of Historic Places.
- 4.5 Support the placement of building(s) on the National Register of Historic Places.
- 4.6 Support the development of a heritage park on the Buhren property south of Big Rock Road. The vision for this park includes a museum, open space, trails, and preservation of the historic farmstead site.
- 4.7 Integrate the future use of Big Rock Park into the Buhren property heritage park, and create a trail connection between the parks.



Goal 5: Develop a comprehensive system of multi-purpose trails and corridors that connect environmental features, public facilities, schools, neighborhoods, and business districts.

Policies

- 5.1 Connect residential neighborhoods to each other as well as to nearby schools, parks, regional trails, and community facilities via a trail network.
- 5.2 Link new trails to existing and proposed trails where appropriate. Whenever possible, use natural areas (e.g., stream or wetland buffers) to create these linkages.
- 5.3 Cooperate with federal, state, county, and city agencies and with private landowners in the region to expand and implement trail projects of local and regional significance.
- 5.4 Work with Puget Sound Energy (PSE) to acquire appropriate rights to existing utility corridor(s) for trail linkages. Develop these corridor(s) with a multi-purpose trail/corridor for both wildlife and public use.
- 5.5 Work with King and Snohomish counties to encourage the continuation of the Snoqualmie Valley Trail to the north of Duvall.
- 5.6 Work with the King County Department of Parks and Recreation to support local connections to the Tolt Pipeline Trail.
- 5.7 Improve, enhance, and maintain additional access to parks and trails through cooperation with other agencies in the maintenance and development of parks, trails, trailheads, and other facilities.
- 5.8 Coordinate park planning with infrastructure and transportation planning for new trails, bike routes, walkways, and safe street crossings.

Goal 6: Promote community health and quality of life.

Policies

- 6.1 Implement a public outreach and wayfinding program to help citizens better locate and use City parks, trails, and open space.
- 6.2 Encourage physical activity by all City residents, including walking to parks, schools, and community facilities.
- 6.3 Coordinate planning for parks, trails, and open space programs and facilities with Healthy Communities policies found in the Transportation Element of the Comprehensive Plan.

Goal 7: Promote interpretation and education programs in the parks, trails, and open space system.

Policies

- 7.1 Provide educational materials for the cultural, historical, and natural resource elements in the parks, trails, and open space system.
- 7.2 Develop better access to information about parks through online materials and an easily recognizable signage system.

- 7.3 Develop a system of informational and display kiosks.
- 7.4 Develop parks, trails, and open space opportunities that encourage and cultivate cultural and recreational opportunities for area tourists.

Goal 8: Implement and update the 2008 Parks, Trails, and Open Space Plan.

Policies

- 8.1 Use the Parks, Trails, and Open Space Plan to guide acquisition of parkland, recreational facilities, and open space.
- 8.2 Acquire and develop parks to meet the City's parks, recreation, trails, and open space level of service standards set forth in this document.
- 8.3 Integrate Duvall parks, facilities, trails, and open space with other local, state, federal, and private park and recreational lands and facilities to best serve recreation users.
- 8.4 Periodically update the Parks, Trails, and Open Space Plan to reflect changes in demographics, recreation trends, and local conditions.

Goal 9: Establish balanced and consistent funding sources for implementing the goals, policies, and plans of the Comprehensive Plan and the Parks, Trails, and Open Space Plan.

Policies

- 9.1 Consider funding parks and recreation facilities through a variety of funding sources described in this plan, including grants, tax levies, and a Growth Management Act-based park impact fee.
- 9.2 Update the Capital Improvement Plan on a regular (annual or bi-annual) basis to identify and budget for parks, trails, and open space projects.
- 9.3 Create a dedicated fund or restrict existing funds to pay for the existing community's proportionate share of future parks, trails, and open space system improvements.

5 EXISTING PARKS, TRAILS, RECREATION FACILITIES, AND OPEN SPACE

This section describes the existing parks, trails, and open space resources in and around Duvall. This inventory also includes public recreation facilities not owned or operated by the City, but used by local residents. Parks, trails, and open space are generally classified based on their user type, facilities and experience provided, and overall size. The National Recreation and Park Association defines a number of park classification types. The park definitions below are based on these NRPA definitions, as well as definitions used by the Recreation and Conservation Office and by communities around Washington state in their parks, trails, and open space plans. These classifications have been tailored to meet the needs of Duvall. The definitions below provide broad guidance regarding the components of different parks and trails. Specific level of service standards for each of these (if applicable) are provided in Chapter 7.

In Duvall, the classification of parks, trails, and open space is based more on function and use type than size and includes the following park types: pocket parks, neighborhood parks, community parks, regional parks, trails, open space, and school sites. The current inventory of parks is best defined by function rather than size. For instance, facilities generally considered for community use (e.g., boat launch) may be found at smaller parks than would typically be classified as a community park. The current variety of sizes for each of the park types in Duvall is indicative of the importance of the park function in classification.

Pocket Parks

Pocket parks are typically small areas used to provide specific recreation opportunities (e.g., a playground, benches, etc.) for a local population with limited or no convenient pedestrian access to larger parks (neighborhood, community, etc.). Pocket parks are generally accessed by foot (or other non-motorized method of travel) and do not have designated parking. Pocket parks are generally up to 1 acre in size.



Neighborhood Parks

Neighborhood parks are generally considered the basic unit of a park system. These parks provide a variety of recreation and social opportunities for people living within a ¼- to ½-mile radius of the park that is uninterrupted by a barrier, such as a major road or topographic feature.

Neighborhood parks may include landscaped and/or open space areas, but tend to provide developed recreation facilities

(e.g., single ball field, single court, in-park trails, picnic areas, etc.). Neighborhood parks include designated parking. These parks tend to be 1 to 10 acres in size.



Currently, there is one neighborhood park in Duvall called Taylor Park. In previous City plans (including the City of Duvall 2006 Comprehensive Plan), the term “neighborhood park” was used to represent parks that were smaller in size and more appropriately classified as pocket parks. As such, this Parks, Trails, and Open Space Plan includes a change in park terminology that will be included in subsequent documents.

Community Parks

Community parks serve a broader purpose and population base compared to neighborhood parks. These parks may meet both developed (i.e., constructed) recreation, as well as open space needs. Community parks are meant to provide recreation opportunities to people living within a 1.5-mile radius and typically have designated parking for users, although non-motorized access and connections are encouraged. The level of development in a community park may range from light (e.g., single-use soft surface trails, picnic sites, non-delineated play fields, etc.) to high (e.g., multiple delineated ball fields,



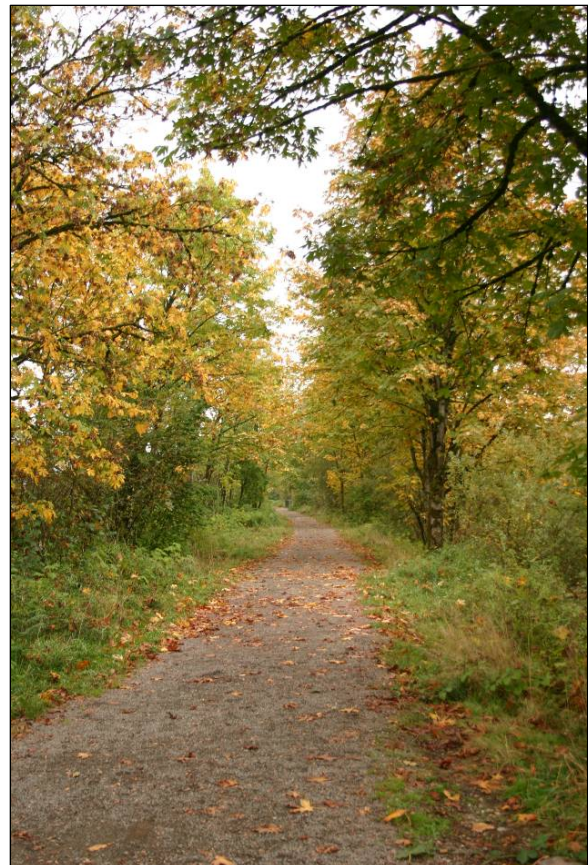
multiple sport courts, paved trails, group picnic shelters, etc.). Community parks may include special recreation facility features, such as a boat launch, ice rink, or swimming pool. These parks tend to be 10 to 50 acres in size, but can be smaller if the park supplies a community recreation need.

There are currently three community parks in Duvall, McCormick Park, Big Rock Ball Fields, and Taylor’s Landing. Although some of these parks are smaller than 10 acres and may serve a single purpose, community parks generally serve a larger area encompassing multiple neighborhoods.



Regional Parks

Regional parks serve multiple neighborhoods or communities. In addition to providing developed recreation opportunities, regional parks also typically include open space elements to preserve unique landscapes, as well as natural and aesthetic resources. While regional parks may provide developed site facilities commonly found in neighborhood or community parks (e.g., playgrounds, ball fields, picnic areas, etc.), they often incorporate larger, highly developed recreation facilities (e.g., tournament ball fields, regional trails, swim facilities, etc.) and special use facilities (e.g., amphitheaters, special event grounds, etc.) that are usually not practical at smaller parks. Regional parks commonly are larger than 50 acres, located within 25 miles of potential users, and provide designated parking, in addition to non-motorized access and connections. The City is not a provider of regional park facilities, which are typically provided by King County or other larger jurisdictions. These types of facilities are generally provided and managed by county and state agencies (although larger cities may provide them as well). Regional parks can also be developed and managed by private and non-profit entities for city resident use.



Trails

In general, a trail is a land or water corridor that provides recreational, aesthetic, transportation, or educational opportunities to motorized or non-motorized users of all ages and abilities. Types of trails include:

- **Local trails** are in-park trails (single or multi-purpose soft or hard surfaced trails located within parks or open spaces) and connector trails (single or multi-purpose hard surface trails that emphasize safe travel between parks or other community features).
- **Regional trails** are single or multi-purpose hard or soft surface trails that cross community boundaries and connect significant regional destinations.

Trails may also be designed for specific uses (e.g., equestrians, off-highway vehicles, cross-country skis, etc.) and are classified as on-street or off-street, and paved or unpaved.

Open Space

Open space areas tend to be set aside primarily for the preservation of natural/significant resources, remnant landscapes, or as visual buffers. These areas may also serve important ecological functions that would be lost in more highly developed park environments. While recreation use is not necessarily precluded in open space areas, appropriate uses tend to be limited to those activities that do not require highly developed facilities (e.g., bird watching, nature appreciation, walking/hiking, etc.). Open space lands can be managed for their natural or visual resource values. Definitions include the following:

- **Natural areas** are dedicated tracts of open space land with the primary purpose of ecological function preservation.
- **Urban green space** are areas of green, natural space within a more developed, urban environment. These spaces include green visual buffers and small passive parks with habitat value.
- **Natural conservation areas** are areas that are set aside as sensitive areas, or are currently managed as wildlife conservation areas.

This differentiation allows for different open space management policies and use types. Open space owned and managed by the City of Duvall currently accounts for approximately 4% of the land within the City limits.

School Sites/Parks

School sites and parks include sport court and field facilities, playgrounds, and trails located on school district property. However, without a formal use agreement between the City and Riverview School District, general public use is not guaranteed at these recreation facilities.

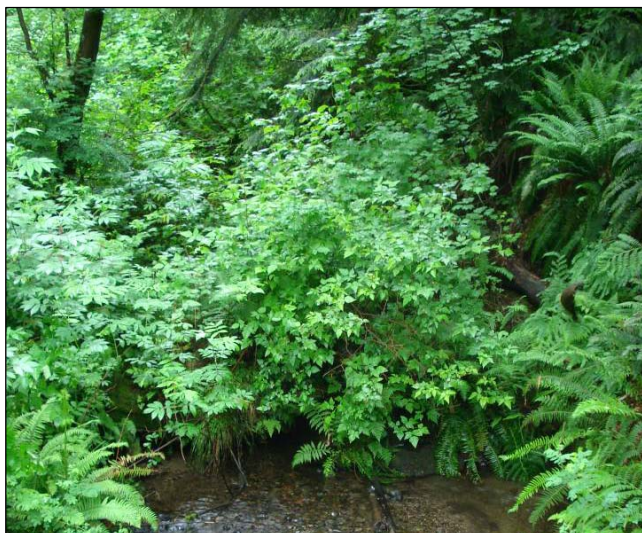


Table 5-1 provides an inventory of existing City-owned parks, trails, and open space. For each existing park and trail, the specific structures contained within the facility are listed. More detailed information on recreation facilities provided by each park is found in Appendix B.

The City has and will continue to work to ensure public access to its unique natural open space resources. Almost the entire shoreline of the Snoqualmie River within the City limits is owned by the City. The City owns other important natural resources in the vicinity of Lake Rasmussen and the steep wooded slopes of Duvall Open Space north of the Taylor's Ridge neighborhood. The City has designated more than 184 acres of dedicated park and open space.

In addition to the City-owned properties listed in Table 5-1, other public recreation providers and the school district operate parks, recreation facilities, and trails in and around Duvall. These facilities are listed below in Table 5-2. In combination, these facilities provide residents a variety of parks and recreation opportunities.

Table 5-1. Inventory of Existing City-Owned Parks and Open Space.

Park/Open Space	Location	Acres	Facilities and Function
<i>POCKET PARKS</i>			
Lake Rasmussen Park	End of 4th Avenue NE and NE Cherry Street.	1.67 (developed); 6.11 (open space)	<ul style="list-style-type: none"> • Picnic area • Adjacent open space
278th Ave. Sports Court	278th Avenue NE and NE 152nd St.	0.5	<ul style="list-style-type: none"> • Basketball Court
Fox Hollow	27727 NE 146th Way	0.77	<ul style="list-style-type: none"> • Playground
Judd Park (Central Park)	NE 150th Street and 275th Avenue NE	0.5	<ul style="list-style-type: none"> • Playground • Picnic area
Skyline Heights*	26600 NE 143rd Pl.	0.18	<ul style="list-style-type: none"> • Playground
Hix Park	282nd Avenue NE near NE 147th Place	0.4	<ul style="list-style-type: none"> • Playground • Picnic area
<i>NEIGHBORHOOD PARKS</i>			
Taylor Park	NE Park St. and 1st Avenue NE	9.0	<ul style="list-style-type: none"> • Basketball court (1/2) • Picnic areas • Playground • Trail • Natural area
<i>COMMUNITY PARKS</i>			
McCormick Park	Extends from NE Stella Street to south of NE 143 rd Ave.	63.24	<ul style="list-style-type: none"> • Picnic areas • Shoreline access • Trail • Summer stage • Grass fields
Big Rock Ball Fields	Off NE Big Rock Road	9.77	<ul style="list-style-type: none"> • Skate park • Baseball/softball fields (2) • Soccer field
Taylor's Landing	Off of 203 at NE Woodinville-Duvall Road	2.24	<ul style="list-style-type: none"> • Boat launch • Fish cleaning station • Picnic area • Access to regional trail • Access to community car-park

Table 5-1. Inventory of Existing City-Owned Parks and Open Space.

Park/Open Space	Location	Acres	Facilities and Function
<i>SPECIAL USE</i>			
Dougherty Farmstead	26526 NE Cherry Valley Road	21.3	<ul style="list-style-type: none"> • Historic Farmstead • Interpretation exhibits • Community garden • Possibility of agriculture use
<i>OPEN SPACE</i>			
Duvall Open Space	North of Taylor’s Ridge subdivision	61.8	<ul style="list-style-type: none"> • Open Space
Big Rock Open Space	Old Big Rock Road at Hwy 203	0.5	<ul style="list-style-type: none"> • Open Space
Old Duvall Water Tank Site	East end of Virginia Street	2.7	<ul style="list-style-type: none"> • Open Space
4th Avenue open space dedication	Cherry Valley Road at 3rd Ave. NE	3.3	<ul style="list-style-type: none"> • Open Space
Alva Miller Park	End of 277 th Pl.	1.9	<ul style="list-style-type: none"> • Undeveloped neighborhood park
Coe Clemons Creek Corridor	15002 Main Street NE	1.78	<ul style="list-style-type: none"> • Open Space
Francis Duvall historical site	Intersection of Riverside Ave., Cherry St. and Railroad Ave.	0.01	<ul style="list-style-type: none"> • Unimproved urban parcel with historic attributes
<i>OPEN SPACE -- NATURAL OR SENSITIVE AREA</i>			
Sensitive Area Lands	Scattered throughout the city	26.1	<ul style="list-style-type: none"> • Open space (natural)
<i>TRAILS</i>			
There are currently no dedicated trails that are owned and operated by the City.			
<i>Source: City of Duvall 2008 (unpublished).</i>			
<i>* Currently homeowners association maintained.</i>			

Figure 5-1 depicts the location of all City-owned parks and recreation facilities within the City limits, as well as the location of other prominent County and private recreation facilities and publicly owned (non-City) parcels. Figure 5-2 depicts the current sidewalks and bike lanes in the City used as a trail network, as well as the sidewalks and bike lanes proposed in the 2004 Comprehensive Plan.

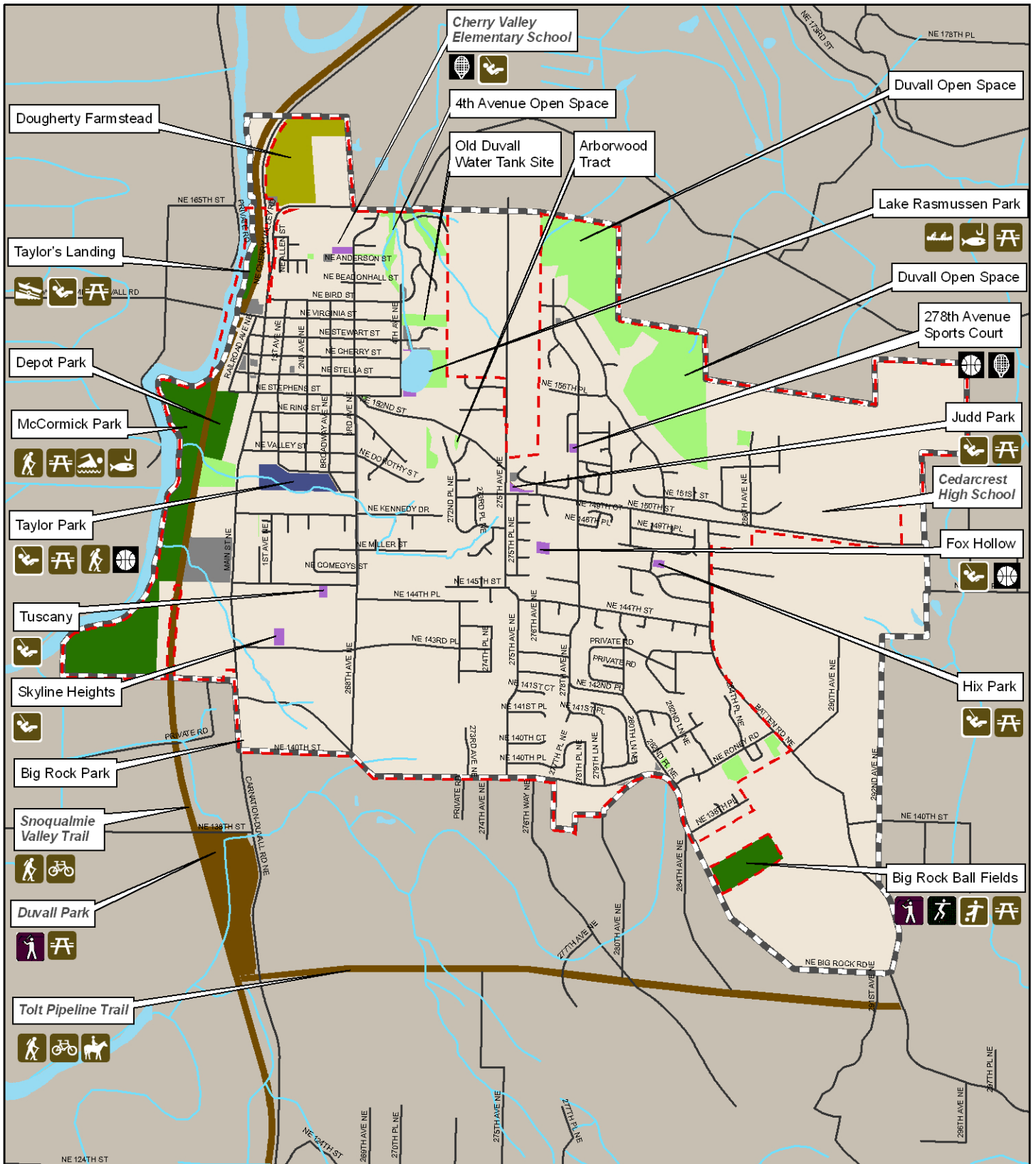
The current parks, trails, and open space in Duvall provide residents with many recreational opportunities.

Table 5-2. Inventory of Non-City Operated Park and Trail Facilities Near Duvall.

Park/Open Space	Location	Acres	Facilities and Function
PRIVATELY OWNED POCKET PARKS			
Arborwood Tract	273rd Drive NE and NE 152nd St.	0.30	<ul style="list-style-type: none"> • Open space
Taylor’s Ridge Tot Lot	277 th Avenue NE	0.19	<ul style="list-style-type: none"> • Playground
Tuscany Hills	267th Court NE	0.54	<ul style="list-style-type: none"> • Playground
KING COUNTY RECREATION FACILITIES			
Duvall Park	NE 138th & Carnation-Duvall Road	24.20	<ul style="list-style-type: none"> • Soccer field • Picnic area • Casual play field • Trail access
Snoqualmie Valley Trail	203 at NE Woodinville-Duvall Road	33.00 miles	<ul style="list-style-type: none"> • Regional trail
Tolt Pipeline Trail	Big Rock Road near 291 st Ave. NE	36.00	<ul style="list-style-type: none"> • Regional trail
RIVERVIEW SCHOOL DISTRICT NO. 407 RECREATION FACILITIES			
Cedarcrest High School	29000 NE 150th St.		<ul style="list-style-type: none"> • Baseball/softball fields (2) • Soccer field • Track • Indoor meeting areas
Eagle Rock Multi Age Program / Riverview K-5 Multi-Age Program	29300 NE 150th St.		<ul style="list-style-type: none"> • Playground • Basketball court
Cherry Valley Elementary	26701 NE Cherry Valley Rd.		<ul style="list-style-type: none"> • Playground • Casual play field • Tennis courts (public and City owned) • Indoor commons area

Source: City of Duvall 2008 (unpublished).

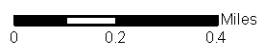
To expand these opportunities, provide additional facilities, and make parks and trails more appealing to users, the City may further develop and improve the existing parks, trails, and open spaces. However, there are constraints to what development can occur at each park because of physical attributes, land availability, or environmental regulations. Table 5-3 summarizes the opportunities and constraints for the future use and development of each park, trail, and open space in the City. The table enumerates the current use at each park, trail, and open space in the City, describes the general conditions of the facilities (estimated from interviews with Public Works and Planning staff members), suggests development and use opportunities, and lists potential constraints to further development.

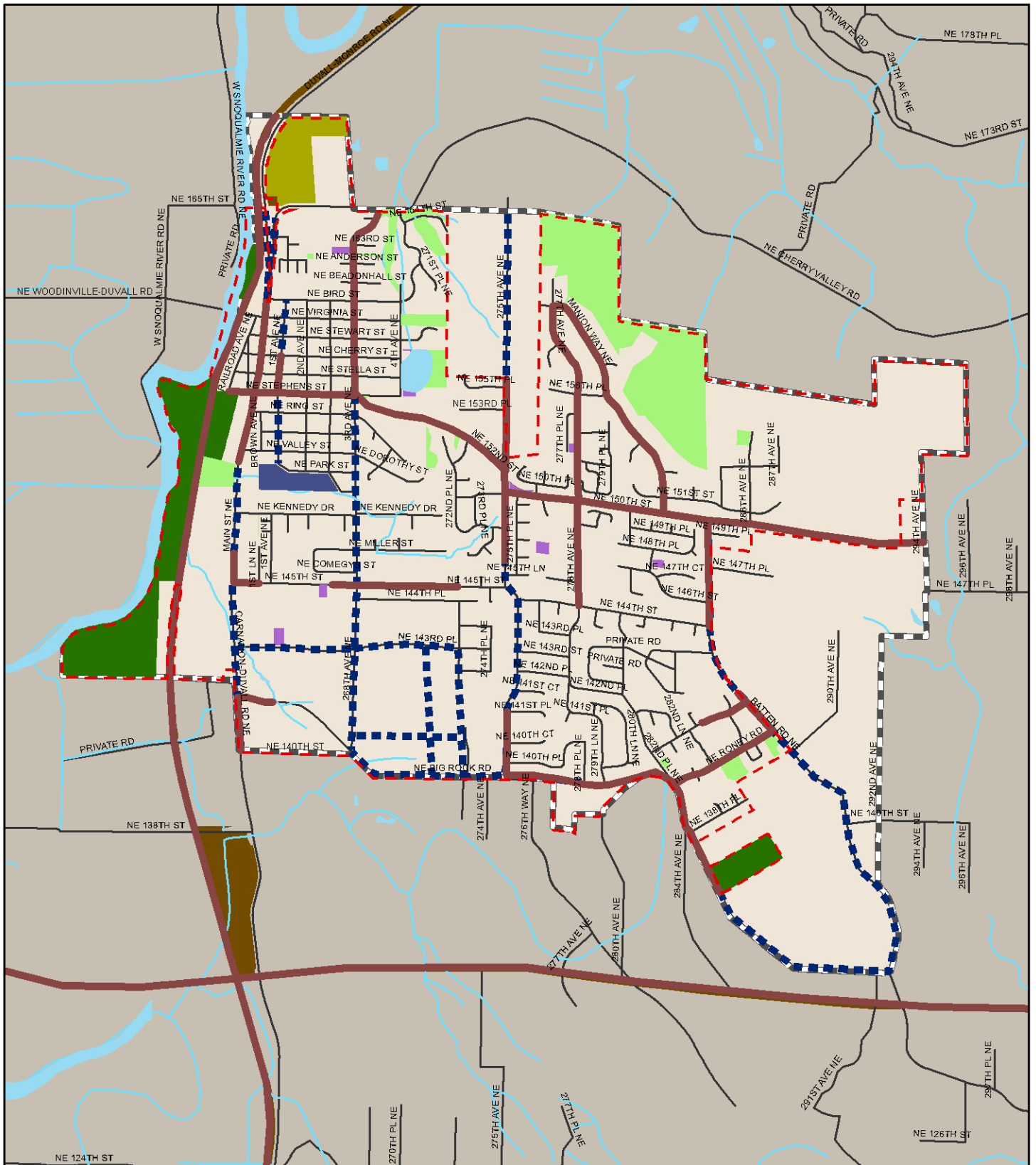


City of Duvall Parks, Trails, and Open Space Plan

Figure 5-1. City-Owned Parks, Trails, and Open Space Facilities

Park Type	Community Park	Roads
Pocket Park	Special Use	UGA Boundary
Neighborhood Park	Open Space	City Boundary
County Park		





City of Duvall Parks, Trails, and Open Space Plan

Figure 5-2. Sidewalks, Bike Lanes, and Trails

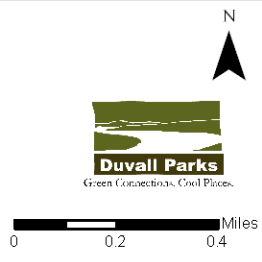


Table 5-3. Opportunities and Constraints for Parks, Trails, and Open Space in Duvall.

Site	Current Use	Condition	Opportunities	Constraints
McCormick Park (includes Depot Park)	<ul style="list-style-type: none"> • Extensive community/regional park with shoreline/wetlands, grass fields, trails, picnic areas, Snoqualmie Valley Trail access, and a summer stage for movies and concerts. Natural areas and built facilities. • Used by most residents throughout the year. • One of the most popular parks in Duvall. 	<ul style="list-style-type: none"> • Excellent condition. • Well maintained. 	<ul style="list-style-type: none"> • Potential for expansion of trails inside the park, especially as raised walkways. • Permanent stage. • Boat launch. • Built facilities-- playground, restrooms, and more parking. • Dog park area. • Environmental education. 	<ul style="list-style-type: none"> • Sensitive environmental areas and river flooding limit the amount of built facilities that can be placed in McCormick Park. • Part of McCormick Park is designated as the City's receiving area for wetland and stream mitigation.
Big Rock Ball Fields	<ul style="list-style-type: none"> • Active field facilities for baseball and soccer, and a skate park. • Used by many residents for organized sports activities and skate park use. 	<ul style="list-style-type: none"> • Excellent condition. • Newly renovated. • Well maintained. 	<ul style="list-style-type: none"> • Play area would make the park useable by younger children. • Lights for fields. • Concession area. • Additional parking. • Restrooms. 	<ul style="list-style-type: none"> • Extremely limited land available for expansion of facilities. • Would need to acquire additional land to add more facilities and build additional fields.
Dougherty Farmstead	<ul style="list-style-type: none"> • Wooden frame house, built in 1888, has been restored. The farmstead was designated an historic site by the King County Landmarks Preservation Board in 1983 and by the State in 2004. ADA access. • Open on weekends. • Site of the community garden "Pea Patch." • Infrequently used by residents. 	<ul style="list-style-type: none"> • Excellent condition. 	<ul style="list-style-type: none"> • Pea Patch is not as used as it could be. Opportunity to expand use. • Trail opportunities through the property. • Historic interpretation opportunities. 	<ul style="list-style-type: none"> • Historic preservation of the farmstead may constrain the type of facility development at the site.

Table 5-3. Opportunities and Constraints for Parks, Trails, and Open Space in Duvall.

Site	Current Use	Condition	Opportunities	Constraints
Taylor’s Landing	<ul style="list-style-type: none"> • Shoreline access, boat launch and fish cleaning stand, and a grassy picnic area. Also provides access to the Snoqualmie Valley Trail and the Community Car-Park. • Infrequently used by residents. 	<ul style="list-style-type: none"> • Poor condition. 	<ul style="list-style-type: none"> • With updating, could be the gateway to the Snoqualmie Valley Trail and Duvall. • Old play equipment needs to be updated. • Parking shortage (parking shared with the Park and Ride). • Boat launch needs repair. New roofs for the picnic shelters. • Build restrooms. 	<ul style="list-style-type: none"> • Significant investment of resources needed to achieve operations and maintenance level of service.
Taylor Park	<ul style="list-style-type: none"> • A natural area park with Coe-Clemons Creek, large rock, woodlands, picnic shelter, barbeque, playground, basketball court, and trails. • Used by most residents frequently throughout the year. • One of the most popular parks in Duvall. 	<ul style="list-style-type: none"> • Excellent condition. • Well maintained. 	<ul style="list-style-type: none"> • Open and operate restrooms. • Extend trail to the north and south of park. • Manage certain areas of woodland for "wild" play areas for children. 	<ul style="list-style-type: none"> • Steep slopes and sensitive environmental areas around the creek limit the amount of development at the park. • Slope and location make it difficult to access from all areas of the city. • Significant trees should be retained, but some residents feel that the park is too closed off.
Lake Rasmussen Park	<ul style="list-style-type: none"> • Lake access and picnic area. East shore property has not been improved. • Not heavily used. 	<ul style="list-style-type: none"> • Satisfactory condition. 	<ul style="list-style-type: none"> • Build a trail around the lake via acquisition or easement agreements. 	<ul style="list-style-type: none"> • No parking. • Lack of signage to indicate possible uses.
278th Ave. Sports Court	<ul style="list-style-type: none"> • Fenced concrete pad for various sporting activities. • Not heavily used. 	<ul style="list-style-type: none"> • Satisfactory condition. 	<ul style="list-style-type: none"> • None defined. 	<ul style="list-style-type: none"> • Conflict with neighbors over noise from the court.

Table 5-3. Opportunities and Constraints for Parks, Trails, and Open Space in Duvall.

Site	Current Use	Condition	Opportunities	Constraints
Judd Park (Central Park)	<ul style="list-style-type: none"> • Playground area with picnic tables. ADA access available. Centrally located. • Used by most residents frequently throughout the year. • One of the most popular parks in Duvall. 	<ul style="list-style-type: none"> • Excellent condition. • Well maintained. 	<ul style="list-style-type: none"> • Addition of shade structures or trees would be welcome for sunny days. 	<ul style="list-style-type: none"> • No additional land for expansion. • Demand for an area for open play. • Adjacent to busy street which could be a safety concern.
Hix Park	<ul style="list-style-type: none"> • Pocket park with a playground and picnic area. • Used by nearby residents. 	<ul style="list-style-type: none"> • Satisfactory condition. 	<ul style="list-style-type: none"> • Improve playground equipment. 	<ul style="list-style-type: none"> • Limited service area given the size of the park.
Fox Hollow	<ul style="list-style-type: none"> • Playground area and sports court. Not heavily used. 	<ul style="list-style-type: none"> • Good condition. 	<ul style="list-style-type: none"> • None defined. 	<ul style="list-style-type: none"> • None defined.
Big Rock Park	<ul style="list-style-type: none"> • Gateway to Duvall; small site 	<ul style="list-style-type: none"> • Good condition. 	<ul style="list-style-type: none"> • None defined. 	<ul style="list-style-type: none"> • Size.
Old Duvall Water Tank Site	<ul style="list-style-type: none"> • Unimproved open space. Elevated water storage tanks have been removed. • Rarely used. 	<ul style="list-style-type: none"> • Satisfactory condition. 	<ul style="list-style-type: none"> • Open space could be used for a trail connection. 	<ul style="list-style-type: none"> • Steep slopes limit developability.
4th Avenue open space dedication	<ul style="list-style-type: none"> • Passive open space. Unimproved. The parcel was defined to include the natural drainage swale that empties out of Lake Rasmussen into Cherry Valley. Bridge to Cherry Valley Elementary School crosses this property. • Rarely used. 	<ul style="list-style-type: none"> • Good condition. 	<ul style="list-style-type: none"> • Open space could be used for a trail connection. 	<ul style="list-style-type: none"> • Steep slopes and wetlands limit developability.
Duvall Open Space	<ul style="list-style-type: none"> • Unimproved open space north of Taylor’s Ridge subdivision. Steep terrain. Includes "Alva Miller" Park site. • Rarely used. 	<ul style="list-style-type: none"> • Good condition. 	<ul style="list-style-type: none"> • Open space could include a primitive trail connection. • Viewing platform and interpretive signage. 	<ul style="list-style-type: none"> • Steep slopes limit developability.
Non-City Operated Sites				

Table 5-3. Opportunities and Constraints for Parks, Trails, and Open Space in Duvall.

Site	Current Use	Condition	Opportunities	Constraints
Skyline Heights <i>(Homeowners Association)</i>	<ul style="list-style-type: none"> • Homeowners association owned pocket park with a playground. • Used by nearby residents. 	<ul style="list-style-type: none"> • Good condition. 	<ul style="list-style-type: none"> • None defined. 	<ul style="list-style-type: none"> • City-owned property, operated and maintained by homeowners association. • Limited service area given the size of the park.
Hix Park <i>(Homeowners Association)</i>	<ul style="list-style-type: none"> • Homeowners association owned pocket park with a playground and picnic area. • Used by nearby residents. 	<ul style="list-style-type: none"> • Fine condition. 	<ul style="list-style-type: none"> • Improve playground equipment. 	<ul style="list-style-type: none"> • Non-City owned and operated property. • Limited service area given the size of the park.
Arborwood Tract <i>(Homeowners Association)</i>	<ul style="list-style-type: none"> • Homeowners association owned landscape features. 	<ul style="list-style-type: none"> • Good condition. 	<ul style="list-style-type: none"> • None defined. 	<ul style="list-style-type: none"> • Non-City owned and operated property. • Limited service area given the size of the park. • Landscaped areas may be used for other uses.
Tuscany Hills* <i>(Homeowners Association)</i>	<ul style="list-style-type: none"> • Homeowners association owned pocket park with a playground. • Used by nearby residents. 	<ul style="list-style-type: none"> • Good condition. 	<ul style="list-style-type: none"> • None defined. 	<ul style="list-style-type: none"> • City-owned property, operated and maintained by homeowners association. • Limited service area given the size of the park.
Duvall Community Park <i>(King County)</i>	<ul style="list-style-type: none"> • Regional park with fields (baseball/soccer) and trail access. Competition quality baseball/ softball/soccer field and casual play fields as well as picnic tables. • Used by residents for organized sports activities. 	<ul style="list-style-type: none"> • Poor condition. 	<ul style="list-style-type: none"> • Available play fields and area for another field. • Access to Snoqualmie Valley Trail. • River access. • Opportunity for collaboration with King County Parks Department. 	<ul style="list-style-type: none"> • Sensitive areas and floodplain make further development difficult. • Current field condition is poor. • Non-City owned and operated property.

Table 5-3. Opportunities and Constraints for Parks, Trails, and Open Space in Duvall.

Site	Current Use	Condition	Opportunities	Constraints
<p>Snoqualmie Valley Trail <i>(King County)</i></p>	<ul style="list-style-type: none"> • Multipurpose trail, with crushed rock over original railroad ballast surface through scenic/historic areas. Non-motorized uses permitted. Former railroad trestles have been decked and hand railed from Duvall to Tokul Road. • Heavily and frequently used by citizens and visitors. 	<ul style="list-style-type: none"> • Excellent condition. • Well maintained. 	<ul style="list-style-type: none"> • Extend trail to the north. • Connections to the trail from other areas in Duvall. 	<ul style="list-style-type: none"> • Non-City owned and operated property.
<p>Tolt Pipeline Trail <i>(King County)</i></p>	<ul style="list-style-type: none"> • Regional horseback and riding trail. Seattle Public Utilities provides water service to Seattle by way of the Tolt Pipeline. The pipeline right-of-way is generally cleared of trees and major vegetation and improved with an adjacent gravel service road. All right-of-way entrances are gated. • Used by residents. 	<ul style="list-style-type: none"> • Excellent condition. • Well maintained. 	<ul style="list-style-type: none"> • Extend trail connections from Duvall. 	<ul style="list-style-type: none"> • Non-City owned and operated property.
<p>Cedarcrest High School <i>(Riverview School District)</i></p>	<ul style="list-style-type: none"> • Indoor facilities include athletic, meeting, and theater spaces. Outdoor athletic facilities include fields, track and a concession stand. • Public use of school facilities is limited. 	<ul style="list-style-type: none"> • Excellent condition. • Well maintained. 	<ul style="list-style-type: none"> • Partnership with the school district to allow public use. 	<ul style="list-style-type: none"> • Non-City owned and operated property.

Table 5-3. Opportunities and Constraints for Parks, Trails, and Open Space in Duvall.

Site	Current Use	Condition	Opportunities	Constraints
<p>Cherry Valley Elementary School <i>(Riverview School District)</i></p>	<ul style="list-style-type: none"> • Outdoor facilities include playground, basketball hoops, fields, and the Cherry Valley tennis courts (City property through a use agreement with Riverview School District). Indoor facilities include gymnasium (commons area). • Public use on school facilities is limited; tennis courts are used by residents. 	<ul style="list-style-type: none"> • Good condition. • Well maintained. 	<ul style="list-style-type: none"> • Lights at tennis courts would increase their usability. • Partnership with the school district to allow public use of playground, basketball court, and fields. 	<ul style="list-style-type: none"> • Non-City owned and operated property, with the exception of the tennis court.

* This park has not been completed as of November 2008.
 ADA = Americans with Disabilities Act.

6 DEMAND

Identifying existing recreation use levels and future demand, as well as current and future population trends, is a key component of the parks, trails, and open space planning process. Demand information is used to help identify resident and visitor preferences for parks, specific types of recreation facilities, and open space as well as to help quantify the number of these facilities that are needed (IAC and CTED 2005). This section



summarizes existing sources of population/demographic trends and recreation participation estimates and demand, as well as the household survey that was completed during the development of this plan. These sources of information help inform the needs identification process, as described in the following sections.

Additional population and demographic data, as well as recreation participation and demand information, is presented in Appendix C. The complete suite of survey results is presented in Appendix D.

Demographic Trends

In 2008, the estimated population of Duvall was approximately 5,925 (OFM 2008). Since 1990, the population has more than doubled and is expected to continue to increase in the next 20 years (City of Duvall 2006, OFM 2006). In 2022, the estimated population for Duvall will be 11,990 based on the current residential capacity (City of Duvall 2008 [unpublished]). The average age of Duvall residents is approximately 33 years, which is lower than both the King County (37 years) and Washington state (35 years) averages (U.S. Census Bureau 2000). Additionally, about 55% of residents are under 35 years of age, and only approximately 3% are over 65 years (City of Duvall 2006). This indicates a younger population of families living in Duvall, including 40% of the population aged 19 years or younger. The ethnic makeup of Duvall is predominantly white (93.5%), with other ethnicities accounting for just over 6% of the population (U.S. Census Bureau 2000).

The implications of population and demographics on the parks, trails, and open space planning process and implementation include the following:

- An increasing population will likely mean more participants in recreation activities and, in turn, a greater demand placed on existing and potential future parks, trails, and open space areas.
- Given the current and anticipated future age structure of the community, which shows Duvall with a high percentage of residents under the age of 18, recreation

facilities should be provided for younger members of the community. However, the parks, trails, and open space system should provide a spectrum of recreational opportunities that can be enjoyed throughout a person's life.

- Changes in diversity should be monitored over time to determine if changes in facility types and design, as well as programs based on ethnic preferences and culture, should be made in the community.
- There is a clear connection between easy access to parks and recreation opportunities and public health. Additionally, Washington's Growth Management Act requires that cities include provisions in their plans and policies to promote active lifestyles. The provision of adequate park and recreation opportunities will play a critical role in improving overall public health for residents of all ages.
- Population growth in nearby cities and unincorporated areas may place added pressure on recreation facilities and use areas within the City's UGA boundary. Cooperation with nearby communities and the development of appropriate connections (e.g., trails, pathways, greenways, etc.) are integral to the successful provision of regional recreation opportunities.

Regional and Statewide Recreation Participation and Demand

State and regional participation data indicate the general need for parks, trails, and recreation facilities and provide justification for building certain facilities to meet this demand. The RCO recently completed a statewide survey of recreation participation (RCO 2007), which indicates participation rates for specific regions, as well as the state overall. Table 6-1 displays estimated participation rates for the top 10 recreation activities in the King County region, as well as the state. Appendix C provides an expanded list (top 25) of activities and participation rates. Additionally, the *Duvall Household Survey* section (below) provides estimates of local activities and participation rates based on the household survey, with these results summarized in Table 6-2.

Table 6-1. Regional and Statewide Activity Participation Rates.

Activity	Participation Rates and Rank			
	<u>King County Region</u>		<u>Statewide</u>	
	% Participation	Rank	% Participation	Rank
Walking without a pet	62.9	1	55.2	1
Picnic, BBQ, or cookout	48.4	2	48.5	2
Sightseeing	48.1	3	42.7	3
Bicycle riding	37.7	4	32.6	6
Social event	35.9	5	30.9	8
Walking with a pet	35.8	6	36.4	4
Observe/photograph wildlife or nature	34.2	7	31.2	7
Playground activities	33.6	8	34.3	5
Aerobics/fitness activities at a facility	33.4	9	24.9	9
Swimming in a pool	27.6	10	23.1	10

Source: RCO 2007.

Table 6-2. Participation Estimates for Duvall and King County (Based on survey results).

Activity	Participation (percent)	
	Duvall ¹	King County ²
Walking	69%	63%
Bike riding	45%	38%
Using playground equipment	45%	34%
Walking with a dog	42%	36%
Picnicking	41%	48%
Observing nature/wildlife	41%	34%
Hiking	35%	23%
Running/jogging	27%	33%
Soccer	20%	16%
Baseball	16%	9%
Swimming	13%	28%

Table 6-2. Participation Estimates for Duvall and King County (Based on survey results).

Activity	Participation (percent)	
	Duvall¹	King County²
Basketball	12%	15%
Tennis	11%	8%
Football	10%	6%
Fishing	8%	4%
Skateboarding	7%	3%
Non-motorized boating	6%	7%
Softball	5%	3%
Roller/In-line skating	4%	6%
Motor boating – Freshwater	3%	6%

¹Source: Duvall Household Survey, 2008.

²Source: RCO 2007.

Interestingly, the top 10 activities in both King County and the state are the same, although their relative rank is slightly different. Additionally, there are several activities that residents in King County participate in at higher rates than the state population as a whole, including walking without a pet, sightseeing, bicycle riding, participating in social events, observing/photographing nature, participating in aerobic/fitness activities, and swimming in a pool.

In addition to providing current estimates of recreation participation rates, the RCO has also developed estimates of future participation rates for popular outdoor recreation activities in the state, including some that are likely to occur at City facilities and use areas (IAC 2003). Table 6-3 provides 10- and 20-year estimates, as a percent change in the number of people participating in each activity, for select activities (the 2003 IAC document only provides estimates of future participation in 15 broad categories of activities; only those activities that are likely to occur at City facilities and use areas are included in Table 6-3).

Table 6-3. Anticipated Statewide Changes in Recreation Activity Participation.

Activity	Estimated 10-Year Change	Estimated 20-Year Change
Walking	+23%	+34%
Nature Activities	+23%	+37%
Picnicking	+20%	+31%
Bicycle Riding	+19%	+29%
Hiking	+10%	+20%
Sightseeing	+10%	+20%
Team and Individual Sports	+6%	+12%

Source: IAC 2003.

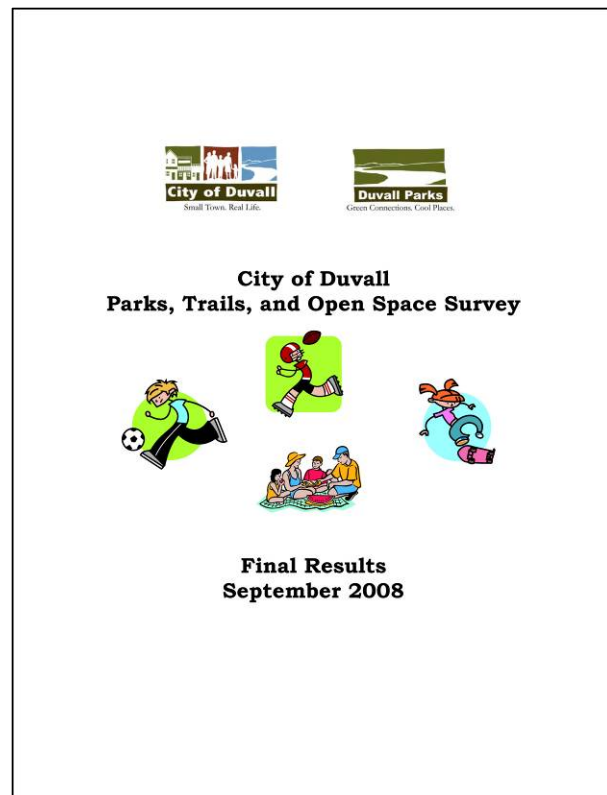
The implications of recreation activity participation and demand on the parks, trails, and open space planning process and subsequent plan implementation include the following:

- Demand for recreation facilities is typically linked to existing participation rates. Thus, for those activities in the King County region that currently experience higher participation rates, a corresponding higher level of demand can be anticipated compared to activities with lower participation rates.
- Several of the most popular activities (e.g., walking with and without a pet, sightseeing, and bicycle riding) in the King County region are not facility-dependent (i.e., they do not require specialized facilities). However, these types of activities can often be facilitated and enhanced with a network of on- and off-street trails that link important community features.
- In general, the participation rate in most outdoor recreation activities is anticipated to increase in the future. This will likely increase demand for certain types of facilities and experiences (Table 6-3).
- Recreation activities and participation trends change over time, sometimes in unexpected ways. As such, activities and participation rates should be monitored periodically to determine if changes in the City’s management strategy, including the types and quantities of recreation facilities, are necessary. A strategically planned, yet flexible parks, trails, and open space system can often be modified to accommodate both anticipated and unanticipated future changes.

Duvall Household Survey

To assist in the development of the Parks, Trails, and Open Space Plan, the City conducted a household survey in May and June 2008. The goal of this survey was to collect information from households within the City limits and the City’s Urban Growth Area (UGA) that could be used to help understand residents’ use of and preferences for parks, trails, and open space. This section summarizes the results of the survey. A complete analysis of all survey results is located in Appendix D of this plan.

Overall, the survey examined recreation activity participation information and identified needs and demand for parks, trails, and open space. The survey identified trends in



parks, trails, and open space use. The results of the survey will guide future decisions by the City to enhance existing and future parks.

Unique characteristics and needs of Duvall gathered from the survey include the following:

- Duvall residents tend to be young; 40% of residents are 19 years or under. This population demographic structure influences the parks, trails, and open space needs of Duvall in that children often need different parks and recreation facilities than adults. Young children utilize playgrounds, whereas older children use sports fields and open play areas for organized and social sports. Many children also enjoy specialized recreation areas such as skate parks. Duvall has a small elderly population, indicating that there is not a strong need or demand for many senior facilities. Demographics change over time, however, and periodic updates of the plan will ensure that the City is providing parks, trails, and open space that meet the needs of all residents over time.
- Most residents indicated that parks, trails, and open space areas are important to the quality of life in Duvall and that most households use the existing supply of parks, trails, and open space. This demonstrates a broad-based support for these amenities in Duvall. The results also indicate that the existing parks, trails, and open space play an important role in residents' lives by providing nearby recreation opportunities.
- Duvall residents typically visit a variety of parks, trails, and open space over the course of the year, but reserve their most frequent use for certain parks.
- Nearly half of all households felt that the existing parks, trails, and open space do not meet their current recreational needs. Survey respondents were clear in their suggestions for improvements to the parks, trails, and open space. Suggested improvements included the following: more parks/specific facilities, more/improved trails, pool/aquatic center/water park, more/improved playgrounds, increased park maintenance, and a dog park.
- Duvall residents participate in a range of recreational activities, including organized sports. Swimming is the most common recreation activity that is not available in the city.
- Most Duvall residents support the development of a trail network in the city. Many survey responses indicated a broad-based support and need for a safe, pedestrian-friendly network of sidewalks and trails throughout the city.
- Priority needs and preferences identified by residents indicate that the top three needs include:
 - (1) Swimming facilities
 - (2) Trails
 - (3) Open space/undeveloped natural areas.Assuming adequate funding, the top three needs include:
 - (1) Swimming facilities
 - (2) Trails
 - (3) Improve existing parks.

- Most households indicated that they would be willing to pay a yearly tax to help support parks, trails, and open space acquisition, development, and improvements.

Overall conclusions of the household survey include the following:

- Parks, trails, and open space areas are **very important** to Duvall residents.
- There is broad support for **new or improved trails** and/or a **trail system** in the city.
- There is broad support for an **aquatic center** or **swimming pool**.
- **Most households** are willing to help **pay** for parks, trails, and open space improvements.
- **Most households** support the creation of a **new parks and recreation district** in partnership with other Snoqualmie Valley cities.

Response Rate

The City's UGA includes approximately 2,030 households. A random sample of 600 households was chosen to participate in the household survey. Based on the number of completed surveys (327), the response rate for the survey was 55%. This response rate is considered successful and is good for a mail and internet survey. Additionally, the number of completed surveys allows for a 95% confidence interval, with a sampling error of ± 4.84 (note: in social science and research, sampling error in the range of 5 to 10 is typically acceptable, although it can be greater in some cases).

Household Profile

On average, household members have lived in Duvall for approximately 10 years (the median years of residency is 6.5 years). The average household size is 3.2 people, and approximately 58% of residents are between the ages of 20 and 64. Children and teenagers (ages 0 through 19) make up nearly 40% of Duvall's population. Given the comparatively high percentage of residents under the age of 20 within the UGA, there is likely a need for recreation-related facilities that encourage children and teenagers to get outdoors and engage in active pursuits.

In general, residents of Duvall indicated that parks, trails, and open space are important to their quality of life. Additionally, approximately 88% of households use Duvall's existing parks, trails, and open space for recreation. This percentage of park use is considered quite high and indicates the importance that existing parks, trails, and open space play in providing recreation opportunities for Duvall residents.

Three parks were particularly popular with Duvall residents. Approximately 66, 59, and 55% of households reported visiting McCormick Park, Snoqualmie Valley Trail (managed by King County), and Taylor Park, respectively, at least once during a typical 12-month period. Interestingly, the most frequently used recreation facility is the Snoqualmie Valley Trail, which is managed by King County. Use of this trail is followed

in frequency of use by Judd Park (Central Park) and Taylor Park, demonstrating demand for both trails and playgrounds. It is also interesting to note that the more frequently visited parks are not necessarily the same as the most widely used parks. This fact likely indicates that while Duvall households may visit a variety of parks over the course of a typical year, there is typically one park or trail facility that they use on a more routine basis. On average, households visit their primary recreation use area (most frequently used facility) about six times in a typical 30-day period.

Figure 6-1 lists the outdoor recreation activities and percentages of Duvall residents who participate in each of these activities on a typical basis. The activities are listed from the most participated (walking) to the least participated (BMX biking) in. Residents indicated that walking, using playground equipment, and walking with a dog tend to be the activities they participate in most often as their primary activity. On average, residents participate in their primary activity almost 11 times during a typical 30-day period. In addition to those activities listed on Figure 6-1, at least one member in approximately 35% of Duvall households also participates in organized sports. The most common organized sports included soccer, baseball, football, and basketball.

Parks, Trails, and Open Space Preferences and Priorities

Approximately 57% of Duvall households indicated that the existing parks, trails, and open space in Duvall meet their current recreational needs. Figure 6-2 displays satisfaction levels with the current number of parks, trails, and other recreation facilities in Duvall. The recreation facilities on Figure 6-2 are listed from the highest to the lowest level of dissatisfaction (the “very dissatisfied” and dissatisfied” response categories have been combined in the ranking). High levels of dissatisfaction are typically associated with deficiencies in the number of facilities in an existing park, trail, or open space system. For Duvall residents, recreation facilities with higher levels of dissatisfaction include swimming facilities, dog parks, trails, tennis courts, and a community center. These results indicate an apparent dissatisfaction with the current number of these facilities in Duvall

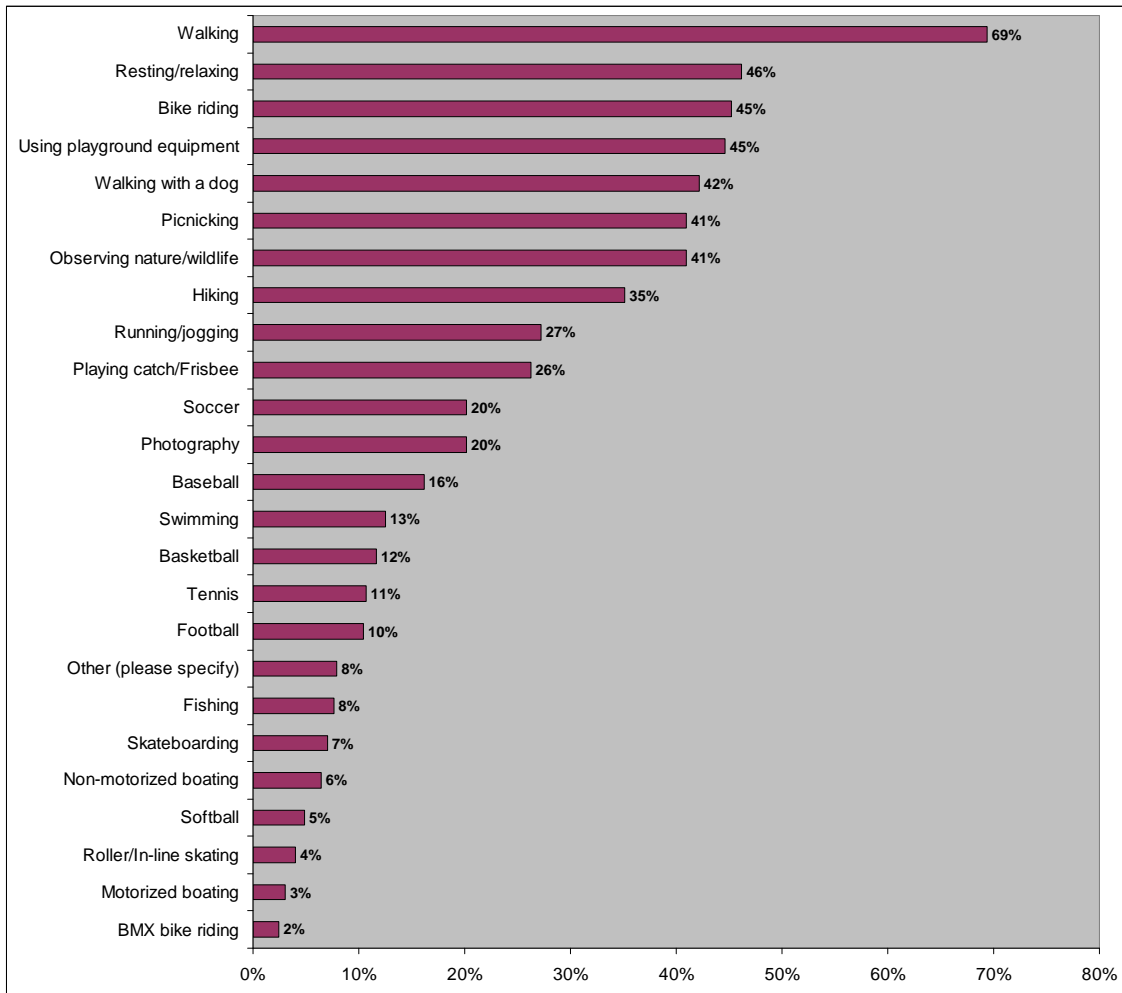


Figure 6-1. Typical Participation in Recreation Activities at Duvall Parks, Trails, and Open Space Areas.

In terms of demand and interest, respondents indicated that the top three priorities for Duvall should be new swimming facilities, trails, and open space/undeveloped natural areas. Assuming available and adequate funding levels, households prioritized a new swimming pool, the development of a city-wide trail system, and improvements to existing parks and recreation facilities as their top three needs. Households indicated that existing parks, trails, and other recreation facilities could be improved with the addition of restrooms, walking paths, and large grassy play areas.

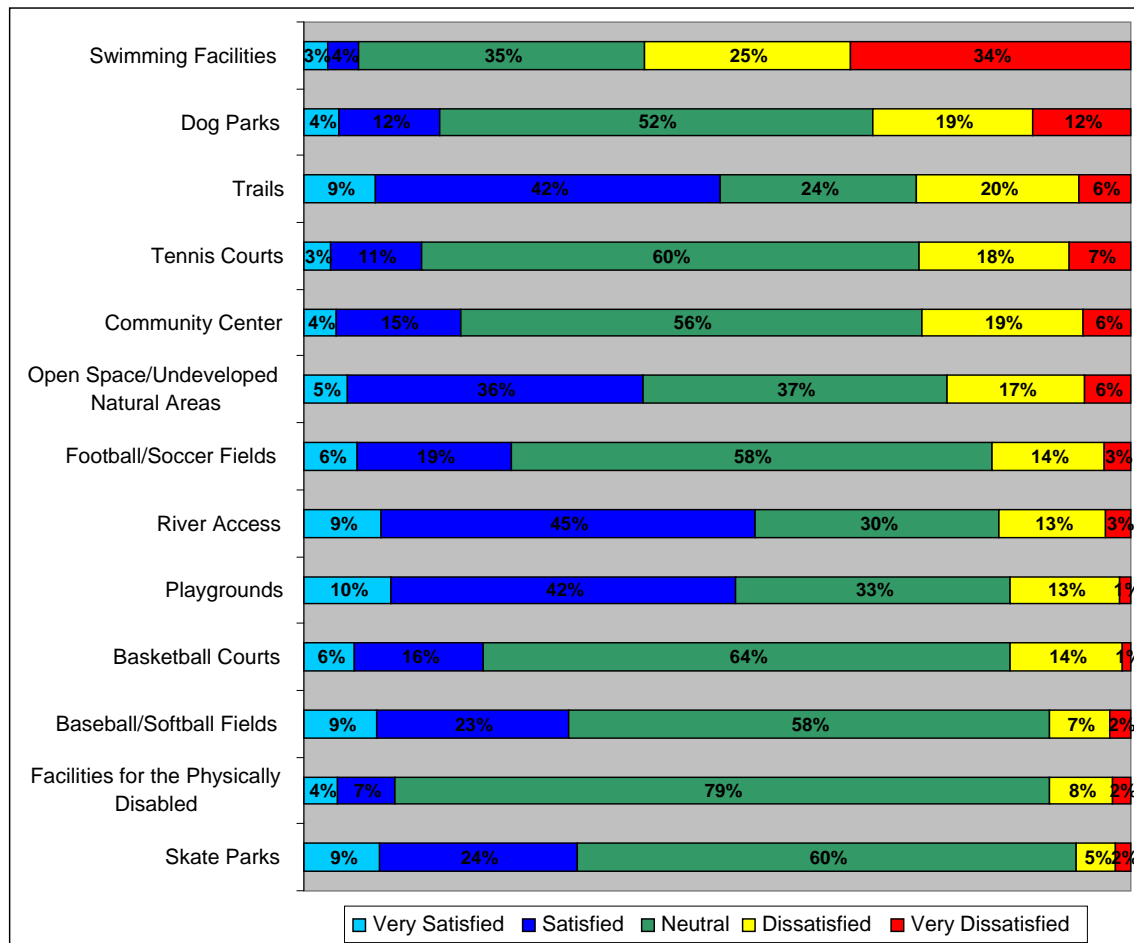


Figure 6-2. Satisfaction with Current Parks, Trails, and Recreation Facilities in Duvall.

Overall, about 79% of Duvall households support the development of a trail network within the city. This is a relatively high level of public support. Approximately 82% of Duvall households indicated a preference for off-street trails, and about 62% of households indicated a preference for paved trails. Considering these preferences, new trails and trail connections should be provided where feasible to enhance not only recreational opportunities, but also to provide alternatives to driving within the city.

In general, when asked to rank potential funding strategies for parks, trails, and open space acquisition and development, Duvall households ranked grant funding as the top strategy, followed by corporate sponsorship and impact fees from new development. Taxes and user fees were the two lowest-ranked funding strategies. These two funding strategies are commonly ranked at the bottom of preferred funding strategies in parks and recreation surveys, and these responses are not unique to Duvall. While taxes were ranked at the bottom of potential funding strategies, nearly three-quarters of Duvall households indicated that they would be willing to pay a yearly tax or fee to help support parks, trails, and open space acquisition, development, and improvements.

Finally, approximately 83% of Duvall households indicated that the City should explore options for establishing a new parks and recreation district with other Snoqualmie Valley cities. A new parks district could help finance parks, trails, and open space acquisition, development, and improvements. A new parks district may also facilitate the provision of facilities that are more regional in nature (e.g., a swimming pool/facility).

7 LEVEL OF SERVICE (LOS) STANDARDS

Level of service (LOS) standards are used to help guide community infrastructure development by measuring the amount and quality of a public service or facility needed to meet residents' demand and the community's stated goals. LOS standards are commonly used and most frequently applied during transportation analysis, where transportation infrastructure is given a letter grade depending on how well components of the



system operate (such as how long it takes to get through a traffic signal or intersection). Park and recreation LOS standards allow jurisdictions to establish specific targets and measure progress toward those targets over time (CTED 2005). By periodically comparing current levels of performance with established standards, a community can determine how quickly it is (or is not) progressing toward established goals.

In community planning, the LOS standards often measure the ability of a specific type of infrastructure (e.g., parks, sewers, electric utilities, police departments, etc.) to adequately serve community residents. Level of service standards have been used in park planning since the 1850s (NRPA 1996).

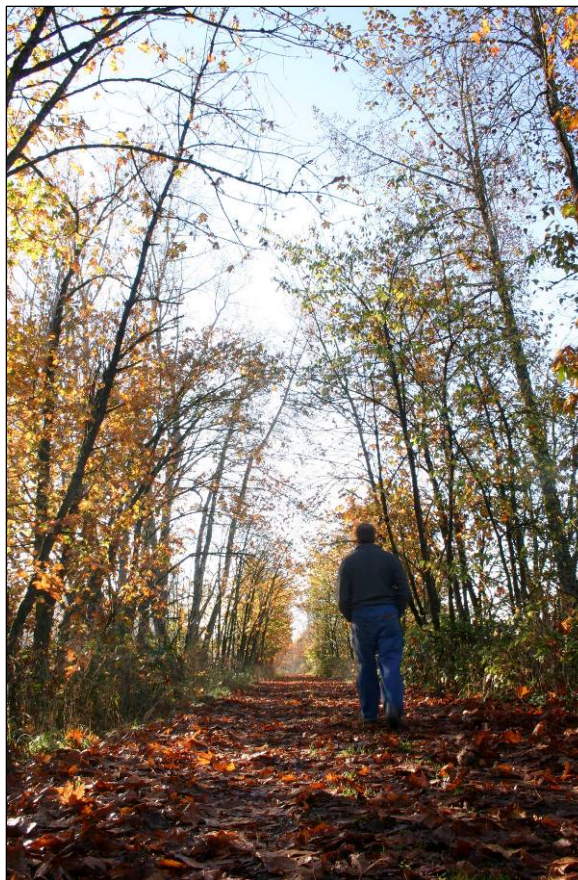
The National Recreation and Park Association (NRPA) has traditionally published national LOS guidelines for outdoor active park and recreation facilities based on population ratios (e.g., 10 acres of parkland per 1,000 residents; one baseball field per 5,000 residents, etc.). Local jurisdictions have typically used these LOS measures to determine park and recreation LOS. A jurisdiction may choose to invest resources in areas with a lower score to achieve a higher target level of service.

Recently, the Recreation and Conservation Office recommended that recreation planners use a new approach to level of service (RCO 2008b). The new approach considers three sets of criteria, or guidelines, including a baseline criteria, enhanced criteria, and in-depth criteria. The enhanced criteria use a spatial analysis component to measure LOS. A spatially based LOS standard measures the proximity of the population to various types of park and recreation facilities (e.g., 75% of the population lives within ½ mile of a park). Many communities use the NRPA (1996) recommended ratio of park acreage per population (e.g., 2 acres of neighborhood parks per 1,000 residents) and have not yet converted to the newer, spatial LOS concept standards.

To plan for Duvall's future needs, a two-pronged approach was used to measure the current and planned park, trail, and open space LOS. This approach used both a spatial analysis using LOS standards recommended by the RCO and NRPA population ratio LOS standards. The spatial analysis determines where there are gaps in the geographic

distribution of each park type and prioritizes non-motorized transportation access to parks and open spaces. Use of the NRPA population ratios helps define acres of parks and numbers of facility types that may be needed in the future to maintain the current LOS given population growth. The population ratio approach emphasizes growth in the overall acreage of certain facility types to match population increase.

The City's LOS standards were created during the development of this plan to ensure that Duvall residents are adequately served by parks, recreation, trails, and open space resources and to meet the recommendations of the RCO. Based on the characteristics of Duvall, LOS radii for three recreation facility types were designated, including pocket parks, neighborhood parks, and community parks. Determination of the LOS radii for Duvall took the



topography of the city and major roadway barriers into account. The Advisory Committee determined the service area radii for each park type based on the specific needs of Duvall residents and the estimated travel time around Duvall given topographic changes over the city. LOS for trails was treated spatially with a network analysis, rather than a spatial distribution analysis. The network analysis identified potential trail or sidewalk corridors at a minimum 0.5-mile grid across the city. Open space LOS was based on acreage and the overall percentage of open space acres in the city.

The spatially based LOS analysis for parks in Duvall highlights where there are gaps in service coverage. The goal for the City is to progressively increase the area where service is provided over the 20-year lifespan of the plan. Duvall LOS radii are listed in Table 7-1. These LOS standards were chosen based on the RCO recommendations, a review of the LOS standards of cities similar to and/or near Duvall, and community input.

Table 7-1. City of Duvall Parks and Recreation LOS Standards.

Park Type	LOS Standard
Pocket	1/4 mile (5-minute walk) to a pocket park
Neighborhood	1/3 mile (10-minute walk) to a neighborhood park
Community	3/4 miles (5-minute bike ride) to a community park
Regional	No recommended LOS radii (City is not expected to provide regional parks)
Non-Motorized Trails	Continuous network of sidewalks and trails throughout the city
<i>Source: RCO 2007; City of Duvall 2008 (unpublished).</i>	

Chapter 8 uses these LOS standards to identify gaps in service and locate new future parks to fill the gaps.

Level of service standards for parks, recreation, and open space facilities were also calculated based on the facility-specific NRPA recommended standards, listed below in Table 7-2.

Table 7-2. NRPA Parks and Recreation LOS Standards.

Recreation Facility Type	LOS Standard
Neighborhood (acres)	2 acres per 1,000 people
Community (acres)	8 acres per 1,000 people
Baseball/softball	1 field per 5,000 people
Football/soccer	1 field per 10,000 people
Tennis courts	1 per 2,000 people
Basketball courts	1 per 5,000 people
Playgrounds	1 per 3,000 people

Source: NRPA 1996.

This population-based information, coupled with the LOS spatial analysis, will help the City locate different facility types in the future planned parks to ensure that the needs of city residents are met. Thus, given projected future population growth in Duvall, the City can estimate how many facilities are needed in the future and where they should be located.

8 20-YEAR PARKS, TRAILS, AND OPEN SPACE SYSTEM

To meet the needs of residents and provide for the future needs of Duvall, a 20-year parks, trails, and open space system was analyzed and developed. A spatially based service area analysis of existing park and recreation facilities was conducted based on the level of service (LOS) radii listed in Table 7-1. This service area analysis is a first step in determining the adequacy of Duvall's parks, trails, and open space resources and will help identify the capital facilities and improvements needed in Duvall over the 20-year timeframe of the plan. The results were used to estimate the mix of park and recreation facilities required to effectively meet the needs of current and future Duvall residents.



The effect of topographic change on mobility between parks and trails in Duvall was also considered. Additional information regarding resident satisfaction, needs, and demands gathered through the household survey gives a more complete understanding of the City's current LOS for parks and facilities. Synthesizing the needs identified in the survey with the identified gaps in service shown in the spatial LOS analysis provides a complete picture to help plan for the future needs of Duvall residents. The components of the future system (neighborhood parks, community parks, open space, and trails) were assembled into the desired 20-year parks, trails, and open space network. Each step in this process is summarized below.

Existing Service Area Analysis

A service area analysis was completed for the type of parks that have LOS radii, including pocket parks, neighborhood parks, and community parks (see Table 7-1). The determination of the LOS radii for Duvall took the topography of the City into account. The Advisory Committee determined the service area radii for each park type based on the specific needs of Duvall residents and the estimated travel time around Duvall given topographic changes over the city. The results of this analysis are summarized below.

Pocket Parks

As shown in Table 5-1, the City of Duvall currently owns and operates five pocket parks (see Chapter 5 for park classification criteria). In addition to these City parks, homeowner associations for some subdivisions own three pocket parks throughout the city (Table 5-2). Altogether, these parks provide limited recreation facilities and



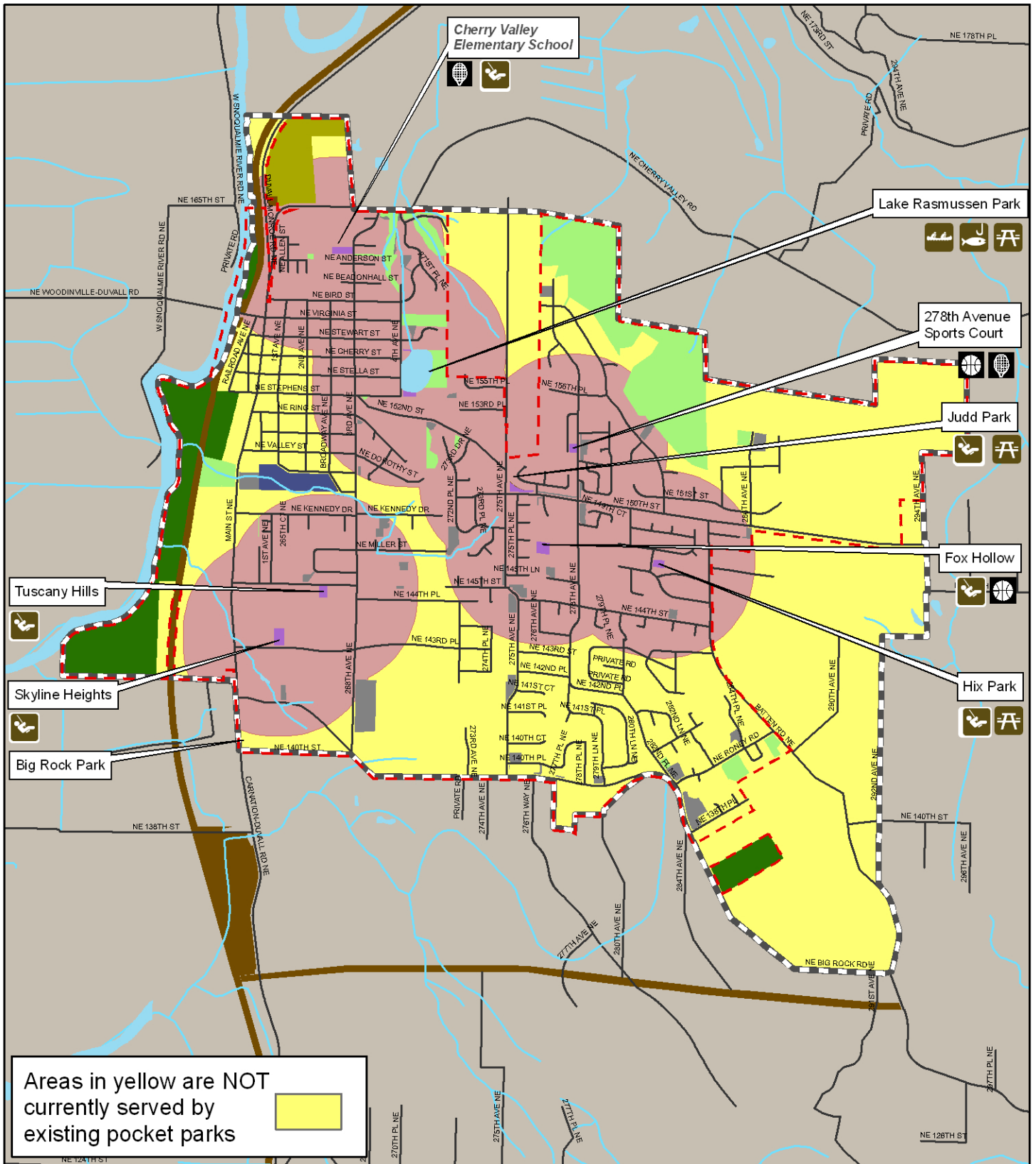
opportunities for nearby residents. Most of these parks include a playground and picnic area and are generally designed for young children (see Table 5-1 for more information). A spatial analysis of the pocket park service area was conducted based on the ¼-mile service area LOS presented in Chapter 7. The results of this analysis are illustrated in Figure 8-1.

Figure 8-1 demonstrates that many Duvall residents are currently served by a pocket park. Subdivision development in recent years has included the creation of pocket parks, meaning that the parks are distributed fairly evenly throughout Duvall. Using the service area radii depicted in Figure 8-1, it is estimated that approximately 58% of Duvall residents (within the City limits and Urban Growth Area) are located within a 1/4-mile service area of a pocket park.

Neighborhood Parks

As shown in Table 5-1, the City of Duvall currently owns and operates one facility - Taylor Park - that meets the criteria for a neighborhood park, as defined in Chapter 5. Taylor Park provides a range of facilities including a basketball court, playground, picnic areas, and a wooded trail and natural play area (see Table 5-1 for more information). Using the neighborhood park LOS standard (1/3-mile service area) defined in Chapter 7, a spatial analysis of the neighborhood park service area was conducted. The results of this analysis are illustrated in Figure 8-2.

As shown in Figure 8-2, Taylor Park serves only a small portion of Duvall residents. However, the park is centrally located within the city, which maximizes the number of residents served by the park. However, the majority of Duvall residents do not have an easily accessed neighborhood park located nearby. Using the service area depicted in Figure 8-2, it is estimated that approximately 22% of Duvall residents (within the City limits and UGA) are located within a 1/3-mile service area of a neighborhood park.



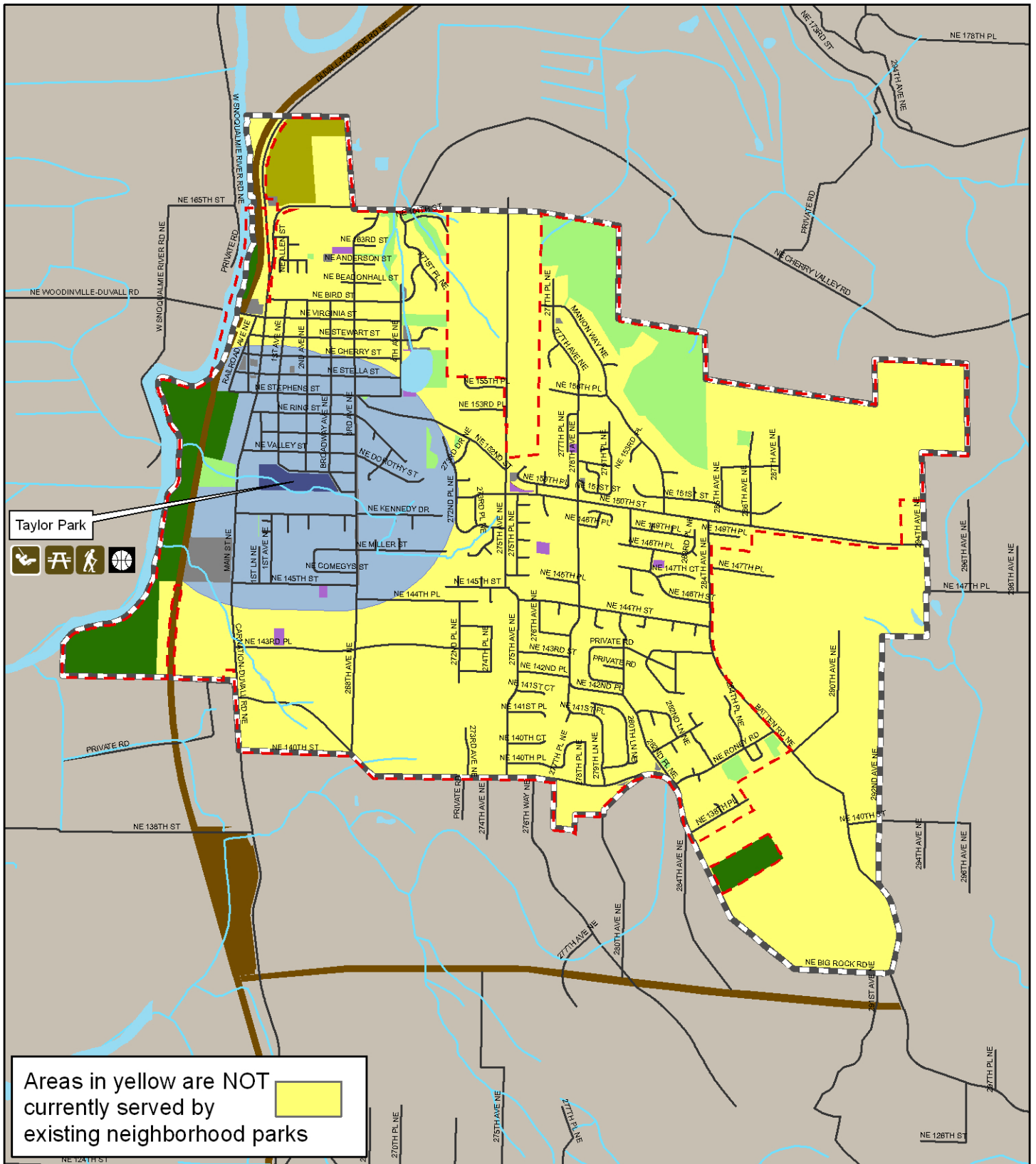
City of Duvall Parks, Trails, and Open Space Plan

Figure 8-1. Pocket Park Service Area Analysis

Pocket Park LOS	Park Type	Community Park	UGA Boundary
10 min. walk, 0.25 miles	Pocket Park	Special Use	City Boundary
Area outside of LOS area	Neighborhood Park	Open Space	
	County Park		

N

0 0.2 0.4 Miles



City of Duvall Parks, Trails, and Open Space Plan
 Figure 8-2. Neighborhood Park Service Area Analysis

Neighborhood Park LOS	Park Type	Community Park	UGA Boundary
15 min. walk, 0.33 miles	Pocket Park	Special Use	City Boundary
Area outside of LOS area	Neighborhood Park	Open Space	
	County Park		

Community Parks

In contrast to the limited number of neighborhood parks, the City of Duvall owns and operates a number of parks meeting the criteria for community parks. Table 5-1 identifies three community parks in Duvall: McCormick Park, Big Rock Ball Fields, and Taylor's Landing. Figure 8-3 shows the results of the community park service area analysis and the application of the community park LOS radius (3/4-mile service area) to these three parks.



Figure 8-3 shows that the City's three existing community parks adequately serve the majority of the City's population. Much of Duvall's existing urban area and the majority of land in its UGA are served by community parks. The northeastern corner of the City's UGA is not currently served by existing community parks, indicating that new park facilities should be considered to fill this gap. Based on the service areas shown in Figure 8-3, approximately 71% of Duvall residents (within the City and UGA) are served by existing community parks.

Non-Motorized Trails and Open Space

Table 5-2 lists the non-motorized trails currently owned and operated by King County and operated in the City of Duvall. Existing trails available to Duvall residents include the Snoqualmie Valley Trail (owned by King County but passing through Duvall's City limits), and a portion of the Tolt Pipeline Trail located outside of city and UGA limits. In addition, sidewalk and bicycle lanes exist on some roads throughout the city (Figure 5-2). A network analysis was conducted on existing Duvall trails and sidewalks to determine key linkages. This analysis identified areas for potential new sidewalks, as well as the development of new off-road trails.

Currently, 5.75% of the land within the City limits and UGA is open space and sensitive areas. Approximately 90 of these acres have been obtained through a combination of plat dedication, permit requirements, and acquisitions. There are also approximately 26 acres considered sensitive areas scattered throughout the city. These sensitive areas add to the open space and natural areas in the city; however, they do not invite public use as some other open space areas might. In addition to City-owned property, other publicly owned parcels, such as school sites and the PSE right-of-way, provide some privately held open space on their property. This additional acreage is not included in the existing LOS calculations but contributes to the city's open space and natural character, nonetheless.

Summary of City Existing LOS

Table 8-1 summarizes Duvall’s current LOS, based on existing parks. Overall, the City is currently performing relatively well in two of the three park categories in terms of access to parks, but a low percentage (approximately 22%) of residents live within 1/3 mile of an existing neighborhood park. The current LOS coverage could be expanded through implementation of this plan and the addition of new park facilities. To raise the percentage of the population served by the park system, the City would need to add a few new neighborhood parks and at least one new community park. In the future, the recreation and open space functions of pocket parks will be achieved through open space dedication requirements for new developments found in Duvall’s Unified Development Regulations (Duvall Municipal Code, Title 14).

Approximately 5.75% of the city is currently owned as public open space. Over time, additional public open space will be needed to bring this number closer to the goal of 10% open space within the City limits.

Table 8-1. City of Duvall Parks and Recreation Existing Service Area LOS.

Park Type	Existing LOS Condition
Pocket	58% of population within ¼ mile of a pocket park
Neighborhood	22% of population within 1/3 mile of a neighborhood park
Community	71% of population within ¾ mile of a community park
Regional	No recommended LOS standard (City not expected to provide regional parks)

Table 8-2 presents the current population ratio LOS based on current facilities. The population ratio level of service measures give an indication of currently provided LOS for parklands and facilities, and aid in planning facilities for future population growth.

Table 8-2. City of Duvall Parks and Recreation Existing Population Ratio LOS.

Recreation Facility Type	Current LOS based on NRPA Standards	NRPA Recommended Standards
Neighborhood (acres)	1.5 acres per 1,000 people	2 acres per 1,000 people
Community (acres)	12.7 acres per 1,000 people	8 acres per 1,000 people
Trails (miles)	0.3 miles per 1,000 people	0.5 miles per 1,000 people
Baseball/Softball	1.8 per 5,000 people	1 per 5,000 people
Football/Soccer	1.8 per 10,000 people	1 per 10,000 people
Tennis Courts	0.4 per 2,000 people	1 per 2,000 people
Basketball Courts	1.8 per 5,000 people	1 per 5,000 people
Playgrounds	2.1 per 3,000 people	1 per 3,000 people

If the City were to maintain the LOS for each facility type, given an estimated population increase of approximately 6,000 people by 2022 (City of Duvall Comprehensive Plan 2008; figure based on a parcel-by-parcel estimate of capacity in the city, Urban Growth Area, and Urban Growth Area Reserve [UGAR] using land use designations from the 2006 Comprehensive Plan), then a certain number of new facilities and acres of parkland would be needed. Table 8-3 presents the calculated number of additional acres and park facilities needed to reach NRPA population ratio recommended LOS for the next 20 years, given projected population growth.

Table 8-3. City of Duvall Parks and Recreation Existing Population Ratio LOS and Additional Acreage and Facilities Needed to Achieve the NRPA Recommended LOS for the Next 20 Years.

Recreation Facility Type	Current LOS based on NRPA population ratios	Additional acres/facilities needed to reach NRPA LOS standards given population growth in 20 years
Neighborhood (acres)	1.5 acres per 1,000 people	15.0 acres
Community (acres)	12.7 acres per 1,000 people	20.7 acres
Trails (miles)	0.3 miles per 1,000 people	4.2 miles
Baseball/Softball	1.8 per 5,000 people	+ 1 field
Football/Soccer	1.8 per 10,000 people	+ 1 field
Tennis Courts	0.4 per 2,000 people	+ 5 courts
Basketball Courts	1.8 per 5,000 people	+ 1 court
Playgrounds	2.1 per 3,000 people	+ 1 playground

The future park, trail, and open space system will require additional acreage and park facilities to achieve the NRPA-recommended population ratio LOS as the population grows in upcoming years. The data presented in Table 8-3 need to be considered in light of the survey results showing citizens' level of satisfaction with the current LOS provided by the parks, trails, and open space system. Specific information regarding facilities needs and user demand was gleaned from the household survey, and this information was used in conjunction with the population ratio LOS number results to determine needed facilities and park types. In addition, some of the acreages and number of facilities needed to reach the NRPA-recommended LOS given future population growth are not feasible for the City to meet given the limited amount of land available in the city, as well as the cost of construction and maintenance of new facilities. However, because of the oversupply of some park types and facilities, the LOS in the future, even accounting for future population growth, may still meet residents' needs. Thus, these numbers are meant as guidance only.

Future Parks, Trails, and Open Space (20-Year System)

After assessing the existing parks, trails, and open space system based on the service area spatial analysis and population served, the number, type, and location of various park and trail resources were identified that could potentially fill the gaps in service and improve the LOS for parks. Two park types were analyzed (neighborhood and community), and the results are described below. The entire 20-year parks, trails, and open space system is shown in Figures 8-7 and 8-8 (presented later in this chapter). Future proposed parks and trails were separated into three phases of approximately 6 years each (Phase 3 is 8 years), providing a regular and incremental process for investing City resources over time. Phasing is intended to help the City prioritize projects, but the phasing should not be considered a firm time table for implementation. The City's future growth patterns, annexation schedule, and available funding will ultimately determine which projects are implemented over time.



Neighborhood Parks

Given the low percentage of Duvall residents currently served by a neighborhood park, more facilities of this type are needed to improve access to a full range of park types. However, because of the limited amount of undeveloped land in Duvall, there is a scarcity of sites large enough to be developed as a neighborhood park. As a result, there is no feasible way at this time to ensure that all of Duvall's future population is within the 1/3-mile radius of a neighborhood park. Because of their geographic distribution throughout the City, Duvall's network of small pocket parks partially fulfills this need. However, it is not recommended that the City attempt to meet the neighborhood park needs with additional small pocket parks because these small parks do not have the space for facilities typically expected or provided in a neighborhood park. As shown in Figure 8-4, three new neighborhood parks would be needed over the 20-year timeframe of the plan.

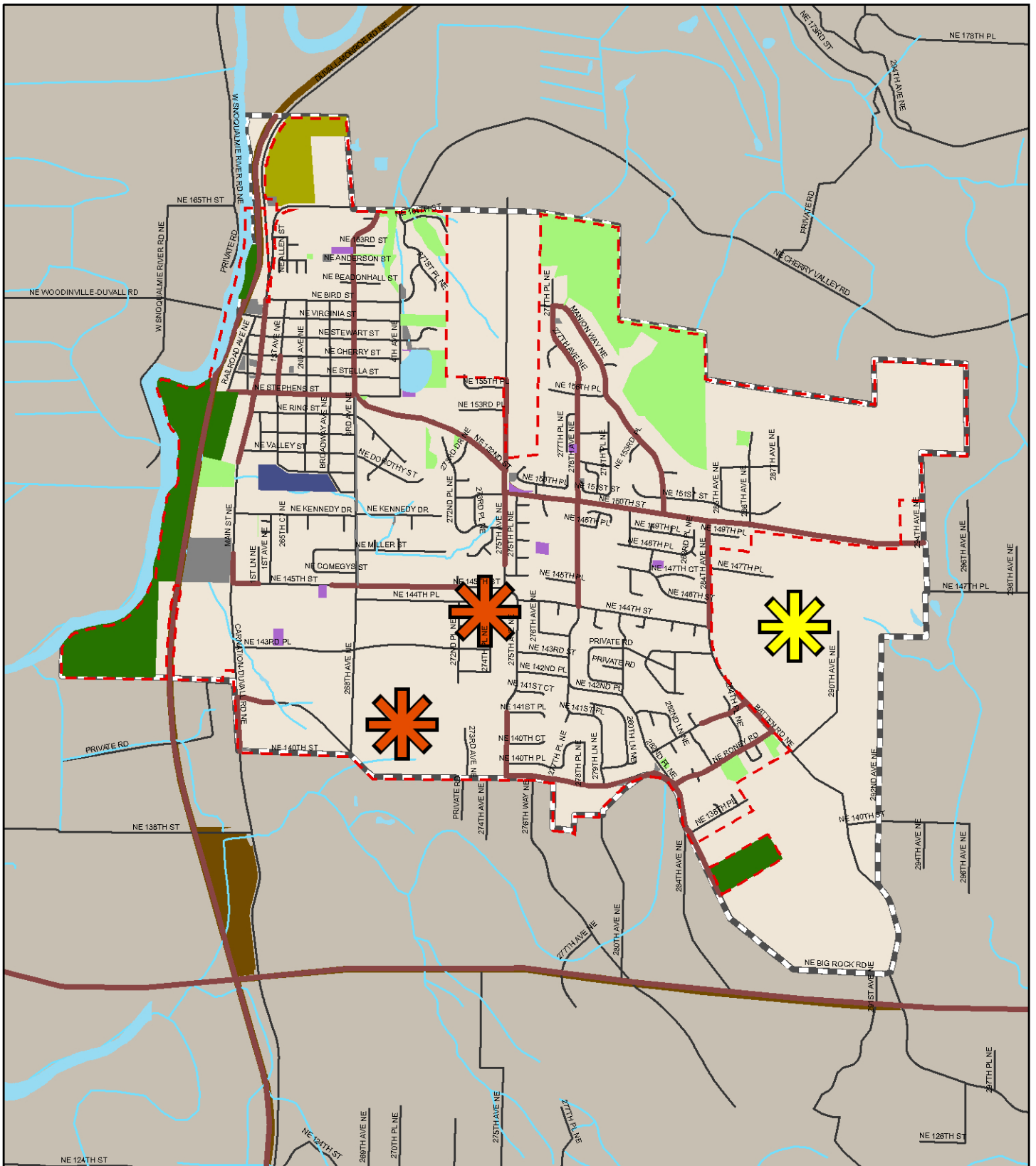
Two new neighborhood parks are proposed for Phase 1 in the south end of the City. These parks would be developed with a variety of potential facilities including a picnic area, trails, grass play area, sports courts, and other features (see Appendix E for suggested conceptual diagrams for the layout of these parks).

One additional neighborhood park is proposed in Phase 3. This park is proposed in a location in the east portion of the UGAR, east of Batten Road NE (the specific location has not been determined). This new neighborhood park would serve the east UGAR.

The anticipated effects on LOS associated with the proposed new parks are summarized in Table 8-4.

Table 8-4. Effect of Proposed Parks on City Park LOS.

Park Type	Existing LOS Condition	Proposed Park LOS
Pocket	58% of population within 1/4 mile of a pocket park	58% of population within 1/4 mile of a pocket park
Neighborhood	22% of population within 1/3 mile of a neighborhood park	55% of population within 1/3 mile of a neighborhood park
Community	71% of population within 3/4 mile of a community park	75% of population within 3/4 mile of a community park
Regional	No recommended LOS standard (City not expected to provide regional parks)	No recommended LOS standard (City not expected to provide regional parks)



City of Duvall Parks, Trails, and Open Space Plan

Figure 8-4. Proposed Neighborhood Parks

Proposed Neighborhood Parks		Park Type	Community Park	Existing Ped/Bike Routes
Phase 1	Pocket Park	Special Use	Roads	UGA Boundary
Phase 2	Neighborhood Park	Open Space	City Boundary	Duvall Parks Green Connections. Cool Places.
Phase 3	County Park			0 0.2 0.4 Miles

Community Parks

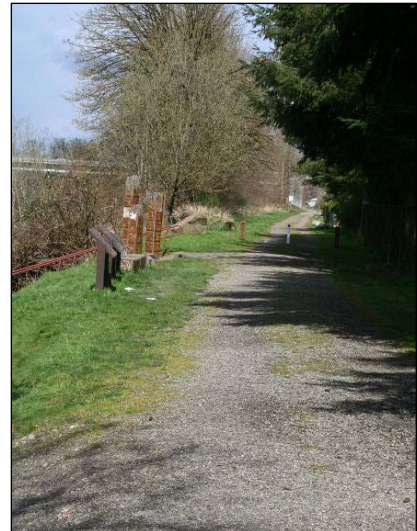
Although Duvall is currently well served by existing community parks, the city will continue to grow, and park use levels will increase, placing additional stress on the existing community parks. As a result, an additional community park, or expansion of existing community parks, is likely needed to help satisfy increased demand. To meet anticipated longer term demand and increase the community park level of service, additional community park development has been proposed for Phases 2 and 3. The general location of these parks is shown in Figure 8-5.

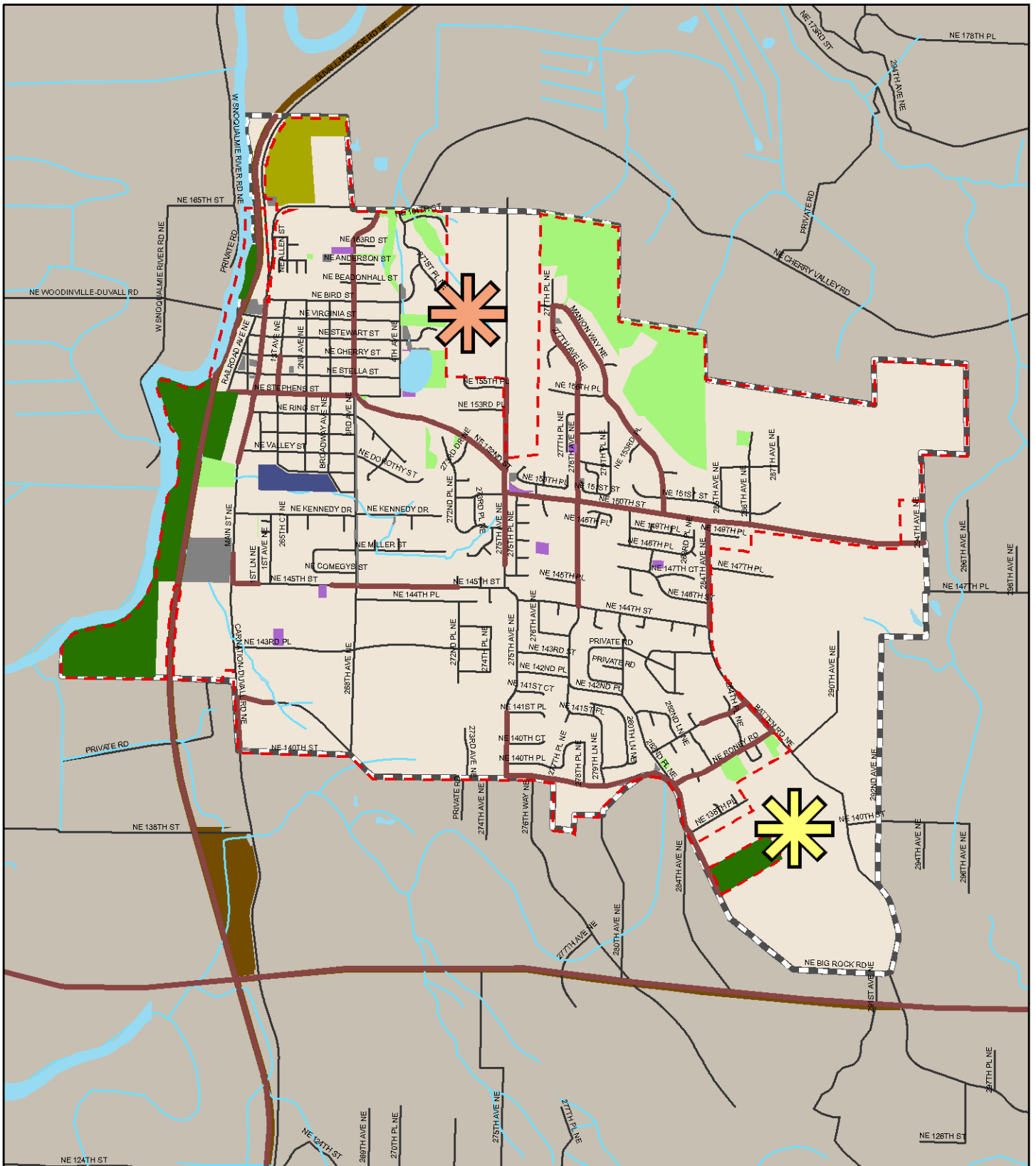


One new community park is proposed for Phase 2. Adding another community park in the north portion of the UGA would improve the existing LOS by serving residents in this area. This action would also add a crucial green link between nearby parks and open space, connecting the 4th Avenue Open Space, Duvall Open Space, and Lake Rasmussen with green trail corridors. A second proposed community park for Phase 3 is the expansion of Big Rock Ball Fields onto adjacent parcel(s) if possible. This would allow more concentrated recreation in the Big Rock Ball Fields area to help satisfy the needs of the growing community. The anticipated effects on LOS associated with the proposed new parks are summarized in Table 8-4.

Trails and Open Space

Currently, existing trails and sidewalks do not adequately serve the community. The household survey results suggest a strong level of support (79% of households) for a city-wide trail network. The current inventory of sidewalks and bike lanes, in addition to County-managed soft-surface trails, provides Duvall with the beginnings of a trail network. However, some trails and sidewalks and some neighborhoods are not adequately connected by trails, nor are there pedestrian facilities along all major roadways. Loop trail opportunities should also be provided as well as better access to public facilities and community destinations (parks, schools, downtown, etc.). A number of new sidewalk connections and trails are proposed, as illustrated in Figure 8-6. These proposed routes are intended to create a city-wide, multi-use trail network (combining pedestrian/bicycle paths and traditional trails) that will be easily accessed by most Duvall residents.



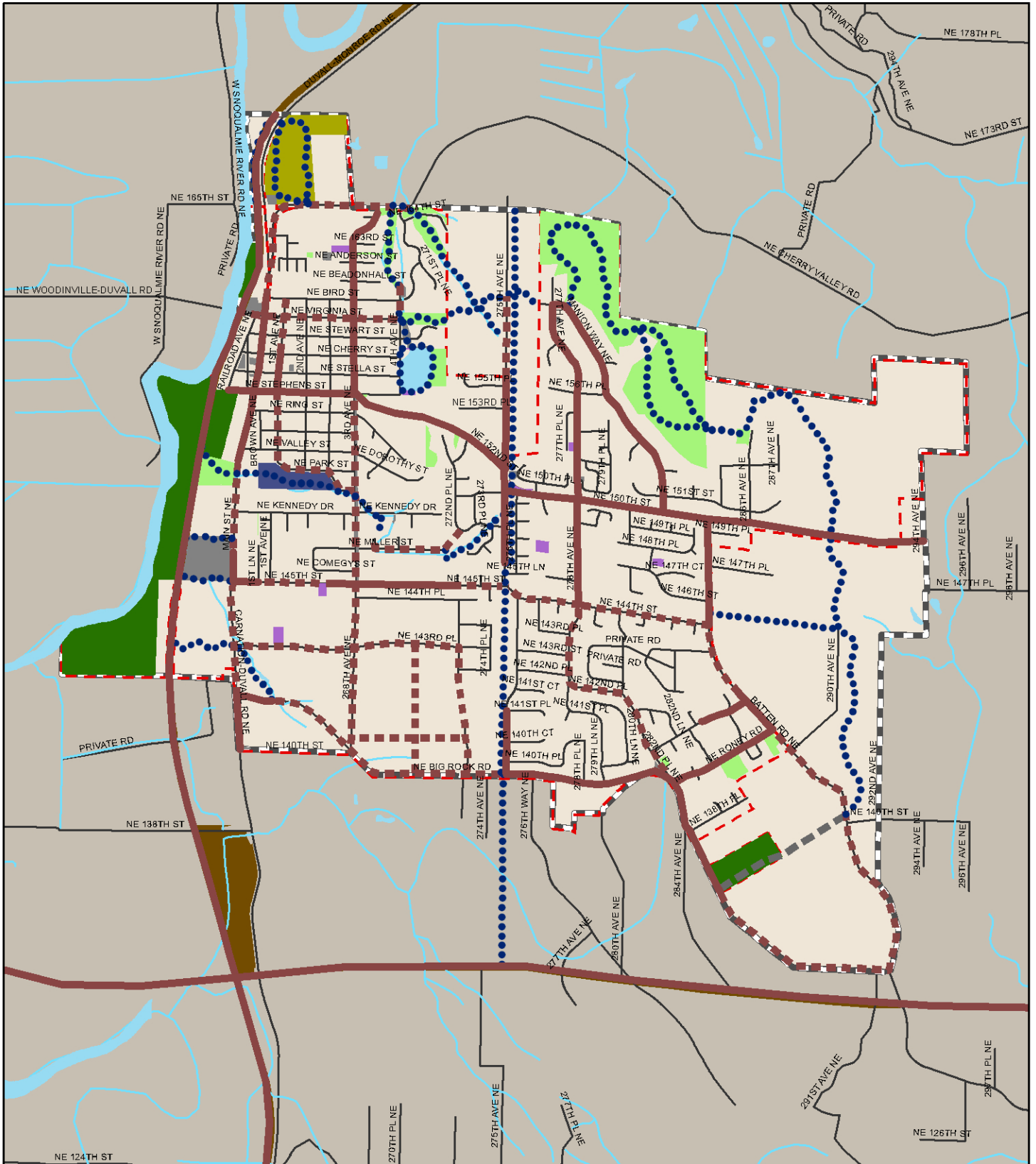


City of Duvall Parks, Trails, and Open Space Plan

Figure 8-5. Proposed Community Parks

Proposed Community Parks	Park Type	Community Park	Existing Sidewalks/Trails/Bike Routes
Phase 1	Pocket Park	Special Use	Roads
Phase 2	Neighborhood Park	Open Space	UGA Boundary
Phase 3	County Park		City Boundary





City of Duvall Parks, Trails, and Open Space Plan

Figure 8-6. Proposed Trail System

Existing Sidewalks/Trails/Bike Routes	Park Type	Community Park	Roads
Proposed Trails	Pocket Park	Special Use	UGA Boundary
Hard Surface Trail	Neighborhood Park	Open Space	City Boundary
Sidewalk and/or Bike Lane		County Park	
Soft Surface Trail			

The phasing of the proposed trails and sidewalks is summarized below.

- Phase 1
 - Southern section of the PSE right-of-way
 - Sidewalk connection from Safeway to Old Town on State Route 203
 - Sidewalks on 3rd Avenue to 268th Avenue
 - Sidewalks on Virginia Street
 - Sidewalks on 278th Avenue NE to NE 142nd Place to 282nd Place NE
- Phase 2
 - Northern section of the PSE right-of-way
 - Coe Clemmons trail connection from Taylor Park to McCormick Park
 - Trail around Lake Rasmussen and through the Water Tank site
 - Sidewalks on NE 145th Street
 - Sidewalks on 1st Avenue NE
 - Sidewalks and trail to connect NE 144th Street to the PSE right-of-way trail
 - Trail through the Duvall Open Space (Taylor's Ridge area)
- Phase 3
 - Trail through the 4th Avenue Open Space dedication
 - Trails through the east UGA
 - Sidewalks/bike lane on NE Big Rock Road to Batten Road
 - Trail through the Dougherty Farmstead north

At this time, trail alignments and sidewalks are conceptual; specific locations would be determined based on availability of land and site-specific characteristics. These trails and sidewalk enhancements represent the backbone of Duvall's trail system. Additional localized trail opportunities, especially soft, smaller trails to connect neighborhoods, would connect to the trail backbone and should be implemented whenever possible.

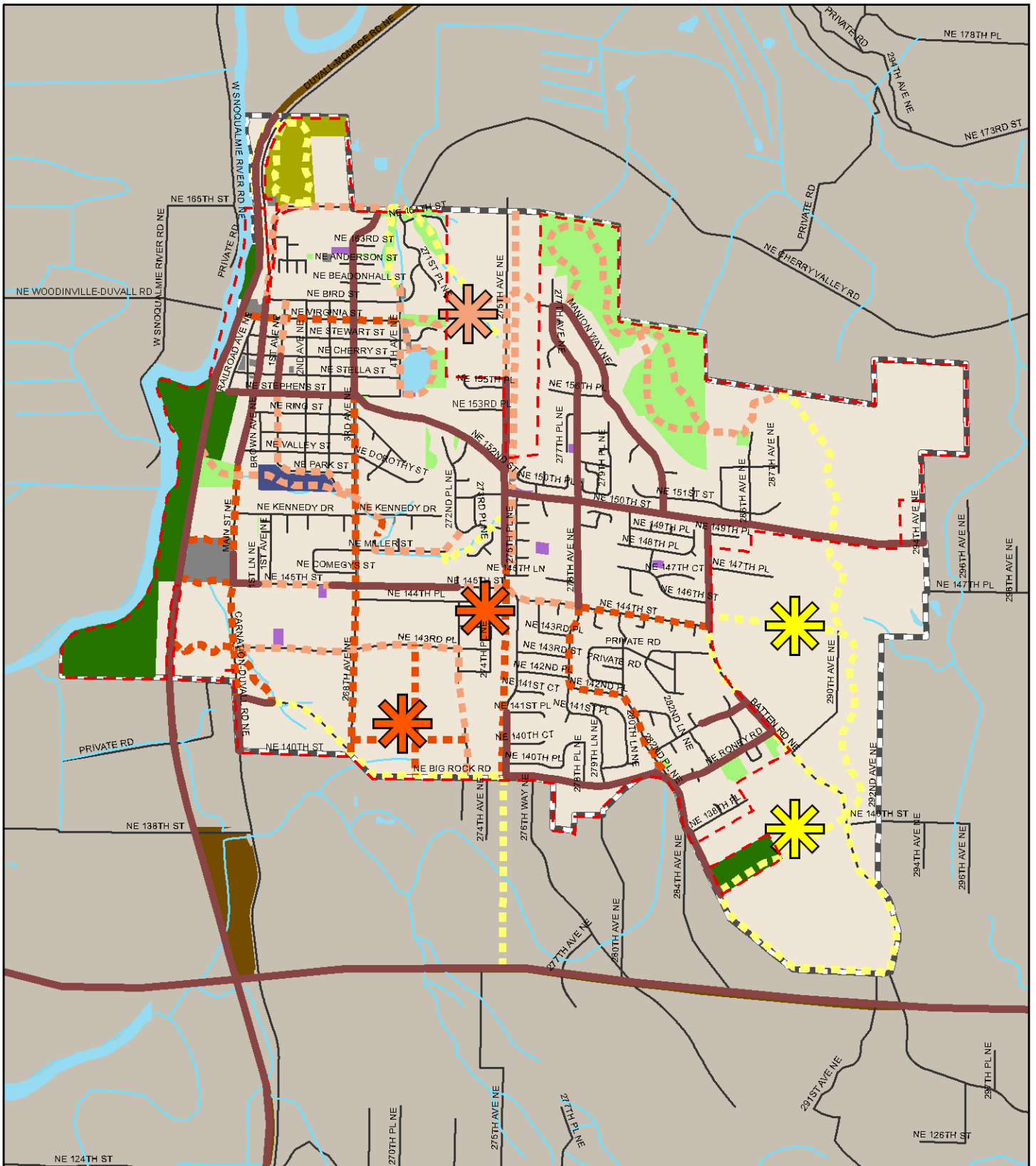
20-Year Parks, Trail, and Open Space System

Combining all of the proposed new parks, trails, and open space over three phases in a 20-year period would result in a system of parks, trails, and open space that should meet the needs of existing and future Duvall residents. Figure 8-7 depicts the components of the proposed system that will improve the LOS for parks and trails. Figure 8-8 depicts this system in the phased approach. Table 8-5 presents the Capital Improvement Program with the phased projects, improvements, and costs over the next 20 years.

In addition to the proposed location of parks and trails, a number of improvements to existing facilities are recommended to enhance the current parks, trails, and open space system in Duvall. The household survey found that 57% of the population of Duvall is satisfied with the current level of service for parks, trails, and open space. The remaining 43% of the population is dissatisfied with the current parks, trails, and open space system and indicated that improving existing facilities and adding swimming facilities were ways to increase their satisfaction. Improvement of existing facilities is a relatively simple way to better meet the needs of park users. Placing additional facilities at existing parks, and strategically locating demanded facilities at new parks, would enhance usability and meet community needs.

Recommended improvements to existing parks include the following:

- Add lighting on ball fields. Lighting at Big Rock Ball Fields and/or the tennis court at Cherry Valley Elementary School would extend the amount of time those facilities could be used each day.
- Add restrooms and drinking fountains at some parks.
- Add a large grassy play area at an existing park, or place one in a new park.
- Add a basketball court and tennis court at an existing park.
- Add picnic shelters over picnic tables.
- Enhance internal walking paths within parks.
- Add street trees to create a network of green streets and to enhance the walkability of the streets.



City of Duvall Parks, Trails, and Open Space Plan

Figure 8-8. Phasing of the City of Duvall Potential Future Parks and Trails

Proposed Parks	Existing Ped/Bike Routes	Park Type	Community Park	Roads
Phase 1	Proposed Trails	Pocket Park	Special Use	UGA Boundary
Phase 2	Phase 1	Neighborhood Park	Open Space	City Boundary
Phase 3	Phase 2		County Park	
	Phase 3			



Table 8-5. Capital Improvement Program.			
Project Description	Phase 1	Phase 2	Phase 3
	2009 – 2014	2015 – 2020	2021 – 2028
PHASE 1			
Neighborhood Park 1, South of NE 145 th Street (approximately 3 acres); medium level development ¹	\$1,019,696		
Neighborhood Park 2, South of NE 145 th Street (approximately 3 acres); acquisition costs; medium level development ¹	\$1,400,000		
Neighborhood Park 2, South of NE 145 th Street (approximately 3 acres); construction costs; medium level development ¹	\$1,019,696		
Construction of soft surface trails ²	\$230,000		
Improvements at Big Rock Ball Fields including utilities, stormwater, nighttime lighting, restrooms. Install a playground area	\$500,000		
Restore restroom facilities, improve lighting, and traffic safety measures at Taylor Park	\$350,000		
Improve basketball court at Taylor Park	\$20,000		
Add picnic shelters/shade covers over 1/2 the picnic tables at McCormick Park, Big Rock Ball Fields, Taylor Park (7 tables)	\$15,000		
Improve internal walking trails within McCormick Park and Taylor Park	\$15,000		
New play structure and general improvements to Hix Park	\$75,000		
New park signage and wayfinding markers; interpretation and education signs and kiosks	\$100,000		
Phase 1 Subtotal	\$4,744,392		
PHASE 2			
Community Park 1, North Island UGA, acquisition (approximately 10 acres)		\$3,500,000	
Community Park 1, North Island UGA, construction (approximately 10 acres); medium level development		\$3,092,760	
Construction of soft surface trails		\$472,000	
Permanent stage at McCormick Park (if feasible)		\$350,000	
McCormick Park enhancements (internal walking trails, wetland enhancements, dog park); signage and direction to McCormick Park from Old Town, especially at Stephens Street		\$600,000	
Develop a restroom at Taylor's Landing; upgrade playground equipment; renovate the entrance		\$650,000	
Enhance tennis courts at Cherry Valley Elementary School. Add lighting to the courts		\$35,000	
Add public art to parks and sidewalks where appropriate and throughout the community		\$150,000	
Add street trees throughout the city		TBD	
Phase 2 Subtotal		\$8,849,760	

¹ Neighborhood Park #1 will consist of a series of three smaller interconnected park sites. Neighborhood Park #2 may consist of either one or two park sites, with a total size of 3 acres.

² Priority is to construct the soft surface trails in the Duvall Open Space, north of the city.

Table 8-5. Capital Improvement Program.			
Project Description	Phase 1	Phase 2	Phase 3
	2009 – 2014	2015 – 2020	2021 – 2028
Phase 3			
Neighborhood Park 3, East UGA, acquisition (6 acres)			\$2,100,000
Neighborhood Park 3, East UGA, construction (6 acres); high level development			\$1,834,747
Community Park 2, expansion of Big Rock Ball Fields, acquisition (8 acres)			\$2,800,000
Community Park 2, expansion of Big Rock Ball Fields, construction (8 acres); high level development			\$3,153,744
Construction of soft surface trails			\$463,000
Construction of hard surface trails			\$112,000
Renovate depot building and add restrooms, meeting rooms, and concessions; install low-level lighting in parking areas			\$600,000
Civic park/plaza in Old Town/Riverside Village redevelopment area			\$1,000,000
Add park furnishings, additional parking and improve the outbuildings at Dougherty Farmstead			\$700,000
Construct a footbridge, install a dock for public use, and enhance the play area and plantings at Lake Rasmussen			\$250,000
Park improvements to Big Rock Park including landscaping, holiday display, etc.			\$100,000
Phase 3 Subtotal			\$13,113,491
TOTAL CIP EXPENDITURES	\$4,744,392	\$8,849,760	\$13,113,491

General Notes:

- A. Costs are in June 2008 dollars.
- B. Costs are for labor and materials and also include:
 - a. Design and engineering costs (15% of construction cost).
 - b. Contractor overhead, taxes, contractor mobilization/demobilization costs, and profit (20% of construction cost).
 - c. Utility connections on site.
 - d. Land use and construction permitting, and environmental study costs.
- C. Costs DO NOT INCLUDE:
 - a. Utility (sewer, water, and electricity) infrastructure outside of park boundaries.
 - b. Operations and maintenance costs.
 - c. Level of finish or quality, the efficiency of the design.
the complexity of the site work (slopes, critical areas, access).

Past planning work has identified other improvements to the parks, trails, and open spaces that are important to city residents. These improvements include the following:

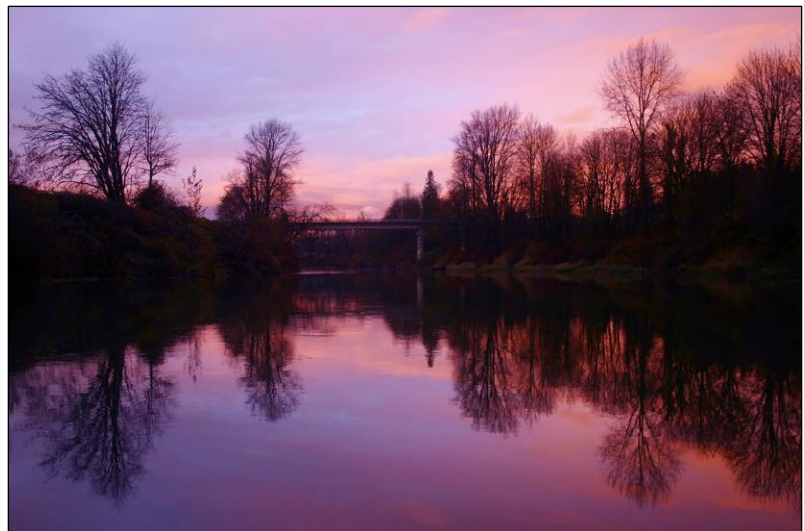
- Protect and enhance McCormick Park as the jewel of the City’s park system through enhancing the natural character and protecting habitat, while also providing recreation-related improvements.
- Upgrade Taylor Park as a valuable recreational and visual resource for Duvall residents through upgrading the facilities and augmenting the trail system, while maintaining the natural character of the park.
- Enhance public access to Lake Rasmussen through increased pedestrian access and protecting the shoreline.

Another action that could improve community members’ satisfaction is providing better information about available parks, trails, and open space resources. Some survey responses indicated that residents sometimes identified a need that was already provided at an existing park that perhaps the respondent was not aware of. To alleviate some perceived needs, additional information, outreach, and/or public education is needed. Some ideas for “spreading the word” would include:

- Consistent looking signage among the parks
- Directional signage (especially on connected sidewalks and trails) to direct non-motorized and motorized visitors
- Park and trail system brochures available to all citizens
- Information available on the City’s website and/or through brochures
- An insert into the utility mailer to promote the park, trail, and open space system

Population growth in Duvall, if continuing as expected, should increase use levels and overall pressure on existing park and recreation facilities, especially sports fields and sports courts. Approximately 40% of the population in Duvall is children and teens.

This demographic group is highly involved in organized sports. While the survey did not show a direct and immediate need for more play fields and sports courts, continuing increases in population may warrant the need for additional sports facilities. To accommodate a future increase in demand for these types of facilities, the City may add outdoor lighting to some existing



fields to extend the time of play or practice, consider the acquisition and improvement of Duvall Park, or develop new sports facilities at the new proposed parks.

The Duvall household survey results and other stakeholder engagement in the park planning process indicate public support for a new swimming pool or aquatic facility. A new pool or aquatic facility is a large investment of resources in both construction and annual operation and maintenance, especially for a community of Duvall's size. The NRPA population ratio recommendation indicates that one pool is needed for every 20,000 people, and a pool's service area radius is generally considered to be 25 miles. Because of the regional nature of a pool facility, the City would need to consider the viability of partnering with other organizations or jurisdictions to provide this recreational amenity. Partnering could include such actions as forming a parks district with nearby communities to provide regional recreation opportunities such as a pool, and teaming with a private organization (like the YMCA) or a public entity (like King County) to build, operate, and maintain the pool. An aquatic facility requires extensive, focused planning to ensure that there is adequate financial support and ample interest within a broader service area to support and maintain the new facility. A thorough, objective feasibility study marks the next step toward development of a swimming pool or aquatic center. The feasibility study would examine the cost of construction, maintenance, and operations for multiple styles of pools, and would provide a thorough analysis of the operating costs and how to support these costs. The feasibility study would also examine the local market, including nearby equivalent facilities for an analysis of the regional feasibility of aquatic facilities.

Open Space for Habitat Value and Enhancement

In addition to protecting environmental resources as sensitive areas, the City's collection of open spaces provides important open space and environmental values. It is important to protect the green infrastructure of Duvall for wildlife habitat, natural resources, and visual and aesthetic values. The City should prioritize protection of available lands and acquisition of open space to promote the green infrastructure system in the city.

Operations and Maintenance

Currently, the majority of residents are satisfied with the level of operations and maintenance at City facilities. To continue the current level of service for maintenance and operations and keep facilities clean, safe, and in good working order, the same or a greater level of effort and funding needs to be devoted to the maintenance and operation of the parks, trails, and open space system. To maximize the allocation of resources and keep operations and maintenance costs in check, all new equipment needs to be durable, high quality, and low maintenance. By using long-lasting materials and construction in the development of new facilities, the City will minimize resources devoted to future maintenance outlays.



9 IMPLEMENTATION AND NEXT STEPS

Implementation of the 20-year Parks, Trails, and Open Space Plan for Duvall will require the City to enact a number of implementation strategies and actions. This section describes a number of recommendations to address both short-term and long-term plan actions to ensure progress in implementing the vision set forth in earlier chapters of this plan. In general, the short-term measures listed are designed for completion within 3 years or less; long-term steps presented below may be more suitable for implementation beyond the first 3 years after the adoption of this plan.

New policy, priority projects, and creation of reliable funding streams for park and trail development and maintenance are needed to create and maintain an adequate parks, trails, and open space system. Existing as well as new approaches are recommended for funding including coordination and partnership with other public agencies or districts, community organizations, residents, and private groups. The City should also consider adopting new policies and regulations to maximize funding sources available for parks, trails, and open space. More specific recommendations for financing, acquisition, and park operations are described below.



Plan Financing Options

Short-term Options

- **Recalculate the city-wide Growth Management Act-based parks impact fee –** This plan provides the basis for the recalculation of the City GMA-based park impact fee. The fees collected will provide the City with additional needed funding for park acquisition and capital improvements. A GMA-based impact fee mitigates for development-related impacts on public facilities, such as parks, trails, and open space, and raises funds to support the development of new facilities. A GMA-based impact fee differs from other impact fees, such as SEPA-based fees (that is, the State Environmental Policy Act), by only assessing fees for growth-related needs. The impact fees may be used to fund park, trail, recreation facilities, and open space improvements and would be paid on a per-unit basis by new residential development. Collection of these recalculated fees will first require that the City adopt a new ordinance.

Long-term Options

- **Maximize funding sources** – Although the use of a GMA-based park impact fee is expected to provide the City with additional revenue for parks, trails, and open space, it will also be important for the City to identify additional funding sources to effectively implement the 20-year plan and vision. Several potential federal funding sources exist that may be used, including transportation-related programs and U.S. Army Corps of Engineers programs, among others. Several state funding programs also exist such as Recreation and Conservation Office and Washington State Department of Transportation programs and grants, among others.

Appendix F includes an overview of many available revenue sources, grant funding opportunities, and creative approaches that the City may consider and use to generate additional revenue for parks, trails, and open space. Creative strategies, such as partnering and joint ventures, should be investigated to provide a comprehensive funding strategy for the plan. The City may also consider the use of a dedicated grant writer to tap into as many funding opportunities as possible.

- **Implement a City Park Improvement Tax** – The survey results indicate that approximately 75% of the population in Duvall would be willing to pay a yearly tax per household for park and trail-related improvements. Raising capital through such a tax would provide needed matching funds for grants and could be used for improvements and expansion to the parks, trails, and open space system in Duvall. Such a tax can be instituted with or without the formation of a parks district.

Plan Land Acquisition Options

Short-term Options

- **Think strategically about park acquisitions and expansion** – As a result of anticipated population growth and increasing development pressure, it is increasingly difficult to provide new parks in areas where they are most needed, especially on sites with sufficient developable acreage. Therefore, it is important for the City to think strategically about potential sites or areas for future parks, trails, and open space and to target those sites early on before they are developed or become prohibitively expensive. The City should work now with land developers, agencies, and property owners to ensure that adequate parkland in the right areas will be available for future generations. This plan enables such strategizing by identifying the approximate location of future parks and approximate alignments of trails and sidewalk routes.

This plan sets priorities for land acquisition and park expansion. The City should also be alert to the availability of potential properties for future parks and be prepared to acquire them. It is important for the City to strategize early on and prepare for necessary Phase 2 acquisitions during Phase 1 of the plan.

Current and impending development constrains the number and location of future parks, trails, and open space proposed in this plan. The lack of available land makes planning for and acting strategically about the acquisition of land critical for the City. Strategic considerations include the following: (1) acquiring land for parks, trails, and open space during the annexation process; (2) negotiating with developers to properly site and develop parks where they are most needed; and (3) anticipating new development to proactively conserve priority lands.

Long-term Options

- **Continue to identify potential locations of ecologically significant open space and ensure effective maintenance of existing open space** – Additional open space is needed within Duvall to serve both ecological and passive recreational functions. Currently, Duvall’s abundant natural resources serve as valuable habitat for local fauna. As the city continues to develop, preserving and maintaining critical open space will be increasingly important.

To achieve the goal of “protect and preserve significant natural resource areas and features,” several initiatives may be needed, including analyses of the Snoqualmie River shoreline, slope stabilization and maintenance, revegetation of disturbed areas, erosion control and management, and others. Key open space parcels that become available over time should be considered for acquisition, either through fee acquisition or easement. Existing natural conservation areas will continue to be protected as sensitive environmental resources. These areas augment the open space network and create natural green linkages.

Plan Operational Options

Short-term Options

- **Design and develop facilities that are low maintenance and of high capacity design** – The quality of the parks, trails, and open space system is dependent on how parks and trails are developed. Park and trail design should encourage facilities to be constructed with high-quality materials that last for a long time. Park and trail design should also consider the setting of the park, such that individual elements fit with the overall design and environment of the facility. Choice of materials and design should also minimize maintenance to the site.
- **Consider forming a permanent Parks Advisory Board to facilitate resident input and guidance in park and recreation facility development and programming** – Survey results indicate that a majority of Duvall residents use parks, trails, and open space facilities frequently and consider them important to their quality of life. A Parks Advisory Board would make the public involvement that has been a cornerstone of this plan an ongoing process, allowing continuing resident feedback into parks planning and increasing the community’s sense of ownership over the parks, trails, and open space system.

Long-term Options

- **Develop and maintain a detailed database of parks, trails, open space, and recreation improvements, and periodically monitor the condition of these resources** – The City should carefully document and monitor all parks, trails, and open space resources over time. This is needed to properly document public resources, maintain facilities, minimize potential health and safety risks, enhance public enjoyment, and provide proper stewardship. This database will also help with annual updates of the 6-year Capital Improvement Plan, periodic updates of this plan, and updates of the Parks and Recreation Element of the Comprehensive Plan.
- **Consider forming a new Parks and Recreation Department in the City** – To implement the plan and follow through on the next steps for parks, trails, and open spaces in Duvall, the City should consider the formation of a Parks and Recreation Department. Currently, Duvall does not have a Parks and Recreation Department, and the management, operations, and maintenance of parks, trails, and open spaces has fallen on the Public Works Department. As the City continues to grow and the parks, trails, and open space system becomes more complex, it will be increasingly difficult for City staff (with other responsibilities) to fulfill the needs of the growing parks and recreation system. Dedicated staff for parks, trails, and open space management and operations could be part of a new Parks and Recreation Department, or possibly within the Public Works Department.
- **Conduct a pool feasibility study to determine the viability of building and operating an aquatics center** – The survey results indicate public support and demand for a new swimming pool or aquatic center. However, a pool or aquatic center is a large investment of resources, especially for a community of Duvall's size. The next step toward consideration of a pool or aquatic center is to conduct an analytical, objective feasibility study. This feasibility study would examine the following: (1) the cost of construction (based on estimated construction costs for various conceptual designs), (2) maintenance and operational costs for multiple pool styles, (3) site and location analysis, (4) options for partnerships, (5) financing mechanisms, including funding and development options, and (6) market analysis. The feasibility study would examine nearby equivalent facilities (both complementary and competing) for an analysis of the regional feasibility of aquatic facilities, as well as changes and trends in the aquatics industry and the experiences of other parks districts and city park departments.

Partnerships

Short-term Options

- **Establish a volunteer corps to assist the City with plan implementation**– Volunteers can play a number of roles in implementing the plan, including interpretation and education programs, public art, Duvall Days, trail maintenance, fish and wildlife stewardship, and park and trail security. The City should set up and manage a volunteer corps to facilitate public volunteer opportunities and to instill public pride and service in the community.

An “adopt-a-park” program could also be part of the volunteer corps. Such a program would have community groups or individuals take care of some of the maintenance at the park, beautification projects, volunteer activities, and other small projects in the park, trail or open space.

Community interest, support, and energy for parks, trails, and open space can also be used in community design-build projects.

Long-term Options

- **Expand partnerships with other agencies, districts, non-profits and organizations** – The City has partnered with the Riverview School District in the past to provide for some of its park facilities and recreation services (e.g., tennis courts at the Cherry Valley Elementary School). In addition, King County manages important recreation resources in the Duvall area, such as the Snoqualmie Valley Trail. In the future, it will be even more important for the City to continue to partner with these and other agencies and districts to provide quality recreation facilities, especially facilities for regional uses. Often, more can be achieved when multiple agencies or districts combine to provide a new facility or service. In particular, the City should coordinate with the following groups:
 - The City should work with the Riverview School District to formalize a public use agreement of school facilities (e.g., sports fields, track, etc.). City staff should collaborate with the school district for the development and management of future facilities. Sharing the cost of facilities and coordinating use between city residents and school members will benefit everyone.
 - The City should work with King County to plan the future of Duvall Park, a nearby, medium-scale facility that does not currently live up to its potential. Other possible partnerships with King County include improving the trail following the PSE right-of-way that runs through the city, expansion of the Snoqualmie Valley Trail to the north, and other catalyst projects.
 - The City should work with private and non-profit groups (such as recreation programs and sports leagues) to engage interested

stakeholders in the development and management of parks, trails, and open space.

- **Consider forming a new Parks and Recreation Assessment District over A larger geographic area** – During the term of the plan, consider working with other municipalities to form a new assessment district in the Snoqualmie Valley region. A new parks district would be able to levy a tax on property in the district so that it could acquire, develop, and maintain parks, trails, and recreation facilities within the district. The district would also be able to acquire land throughout the entire land area of the district without being confined by the current Urban Growth Area or Duvall City limits.

For facilities that are more regional in nature, such as a swimming pool or aquatic center, a larger population base and geographic service area are needed. This service area may be similar to the larger school district boundary that serves Duvall and other nearby communities like Carnation. Further study would be needed to determine the specifics and feasibility of a new parks and recreation district, and such an action would require voter approval. These districts also tend to receive more stable funding over multiple years, depending on which type of district is formed.

Internal Policies

Short-term Policies

- **Adopt the Parks, Trails, and Open Space Plan and implement related actions** – By adopting the Parks, Trails, and Open Space Plan, the City affirms that parks, trails, and open space are priorities in Duvall. This long-range plan lays the foundation for related actions to implement the plan, including an update of the 6-year Capital Improvement Plan (CIP), updating the Parks and Recreation Element of the Comprehensive Plan, recalculating the parks impact fee, and acquisition and development of parkland and trails. By concurrently updating the Parks and Recreation Element of the Comprehensive Plan, the City ensures that policies in the Comprehensive Plan support recommendations contained within this plan. The City should annually update its 6-year CIP and reprioritize actions, improvements, and acquisitions as they are implemented and identified in this plan.
- **Modify transportation standards to include non-motorized facilities in transportation improvement projects** – Trails and sidewalks were identified in public meetings and the survey as being extremely important to residents, and opportunities to improve these facilities are described in this plan. The plan's trails and sidewalk improvements should be implemented in conjunction with new transportation projects to be built or modified in the city. The American Association of State Highway and Transportation Officials (AASHTO) standards for road widths should be used to develop plans for bike lanes and sidewalk additions to existing roads. These activities support the goals of developing a high-quality system of multi-purpose trails and corridors that connect environmental features, public facilities, schools, neighborhoods, and business districts; and promoting community health and quality of life.

Long-term Policies

- **Periodically update the Parks, Trails, and Open Space Plan** – As Duvall's population grows, recreation trends may evolve and demographic shifts may occur. Parks and recreation resources necessary to meet residents' needs may change. Therefore, it is important for the City to periodically re-evaluate its parks, trails, and open space system. It is also important to re-examine park and recreation policies and proposed park and recreation facilities to ensure that they effectively represent the views and needs of the changing population and conditions. In addition, to remain eligible for some Recreation and Conservation Office grant programs, the City must update the park plan every 6 years.

10 REFERENCES

- Allen, L.R., and T.W. Tucker. 2008. Research Update: Striving for Results. Parks and Recreation. National Recreation and Park Association. Ashburn, VA. Vol. 43(2): 32-39.
- Berk & Associates. 2005. City of Duvall Economic Development Strategic Action Plan: 2006-2011. Prepared for the City of Duvall by Berk & Associates, Seattle, WA. Adopted December 8, 2005.
- Booth, K.L., B.L. Driver, S.R. Espiner, and R.J. Kappelle. 2002. Managing Public Conservation Lands by the Beneficial Outcomes Approach with Emphasis on Social Outcomes. New Zealand Department of Conservation, Science Internal Series 52. Wellington, NZ. 57 pp.
- City of Duvall. Undated. McCormick Park Plan.
- City of Duvall. 2003. Duvall City-Wide Visioning Plan. Duvall, WA.
- City of Duvall. 2004a. City of Duvall 2004 Comprehensive Plan. Duvall, WA.
- City of Duvall. 2004b. Duvall Downtown Sub-Area Plan. Duvall, WA.
- City of Duvall. 2006. City of Duvall 2006 Comprehensive Plan. Duvall, WA.
- City of Duvall. 2008. City of Duvall 2008 Comprehensive Plan. Duvall, WA (unpublished draft).
- CTED (State of Washington Community, Trade, and Economic Development Department). 2005. Planning for Parks, Recreation, and Open Space in Your Community. Olympia, WA.
- Herrera. 2002. Stream Habitat Assessment, Existing Conditions Report and Fish Habitat Restoration Plan. Prepared for the City of Duvall by Herrera Environmental Consultants, Inc., Seattle, WA.
- IAC (Interagency Committee for Outdoor Recreation). 2003. Estimates of Future Participation in Outdoor Recreation in Washington State. Olympia, WA.
- IAC and CTED. 2005. Planning for Parks, Recreation, and Open Space in Your Community. Olympia, WA. 92 pp.
- NRPA (National Recreation and Park Association). 1996. Park, Recreation, Open Space and Greenway Guidelines. NRPA. Arlington, VA.

NRPA. 2007a. NRPA website. Available at URL = <http://www.nrpa.org/>. Accessed July 2, 2007.

NRPA. 2007b. Top 10 Reasons Parks are Important. Available at URL = <http://www.nrpa.org/content/default.aspx?documentId=3749>. Accessed July 2, 2007.

OFM (Office of Financial Management). 2006. State Population by Age and Sex: 2000 – 2030, from November 2006 Forecast (updated 10/30/2006). MS Excel spreadsheet available at URL = <http://www.ofm.wa.gov/pop/stfc/stfc2006/stfc2006.xls>. Accessed May 20, 2008.

OFM. 2008. April 1 Population of Cities, Towns, and Counties Used for Allocation of Selected State Revenues. MS Excel spreadsheet, available at URL = <http://www.ofm.wa.gov/pop/april1/finalpop2008.xls>. Accessed November 17, 2008.

RCO (Recreation and Conservation Office). 2007. 2006 Outdoor Recreation Survey: Final Report. Olympia, WA.

RCO. 2008a. Washington State Recreation and Conservation Funding Board, Manual 2: Planning Policies. January 29, 2008.

RCO. 2008b. The Role of State Government in Outdoor Recreation: Defining and Measuring Success. A State Comprehensive Outdoor Recreation Planning (SCORP) Document. Draft, dated March 27, 2008.

- TPL (Trust for Public Lands). 2005. The Benefits of Parks: Why America Needs More City Parks and Open Space. Available at URL = http://www.tpl.org/content_documents/parks_for_people_Jul2005.pdf. Reprint of “Parks for People” whitepaper published in 2003. Accessed May 6, 2008.
- TPL. 2007. Economic Benefits of Land Conservation. Available at URL = http://www.tpl.org/content_documents/econbens_landconserve.pdf. Accessed June 7, 2007.
- U.S. Census Bureau. 2000. Census 2000: Summary File 1 (SF 1) 100-Percent Data, Geographic Comparison Tables for Washington State. Available at URL: http://factfinder.census.gov/servlet/GCTSubjectShowTablesServlet?_lang=en&_ts=230646553390. Accessed May 20, 2008.

Appendix A: Record of Stakeholder Involvement

Appendix B: Detailed Parks, Trails, and Open Space Inventory

Appendix C: Population and Demographic Information; Participation and Demand Data

Appendix D: Detailed Survey Results

Appendix E: Conceptual Layouts of Parks and Trails

Appendix F: Additional Park, Trail, and Recreation Funding Sources

